



Bayside Toronto Phase 2 Marketing Strategy Overview

July 2014



WATERFRONToronto

**building our
new blue edge**

The Bayside Toronto Brand Identity

BAYSIDE
T O R O N T O

Bayside Toronto will be a major destination in Toronto's emerging downtown waterfront featuring opportunities for living, working, shopping, dining and leisure time. The logo graphic must reflect this dynamic, cosmopolitan urban sensibility.

The typeface is clean, simple and elegant. It is a customized Neutra Text san serif type font, set in capital letters, giving a sense of authority within a modern look and feel.

Colour is a vital component of brand identity. When used on all communication materials, it reinforces the brand experience. The green and blue reflect the waterfront - land meeting water. They are both strong, bright colours that tie into the vibrancy of Bayside Toronto.

Positioning Statement:

Redefining life on the water's edge.

Bayside will not only be a destination – it will be a community. This 24/7 neighbourhood will include homes, restaurants, shops, cultural venues, parks, the lakefront promenade and boardwalk. Combined with easy access to other emerging waterfront neighbourhoods and downtown, Bayside Toronto will define life on the water's edge.



Bayside Toronto Community Master Plan



Bayside Toronto's Environmental Sustainability Initiatives

Hines and Tridel are both firmly committed to building communities that are environmentally responsible, energy efficient and healthy places to live.

A Vital Part Of Toronto's First LEED® Gold Neighbourhood

The Bayside community has been planned and designed to conform with Waterfront Toronto's Minimum Green Building Requirements (MGBR), and as such, is already recognized as being a part of Toronto's first LEED® Gold Neighbourhood. (Stage 1 pilot certification)

R3-R4 Condominium Pursuing LEED® Platinum Certification

R3-R4, the second phase condominium in the Bayside Toronto community, will be an energy efficient and environmentally friendly condominium – a LEED® PLATINUM candidate, the highest rating possible with the LEED® Green certification system. It will be a high performing building using less energy while providing superior comfort and cost savings to its home owners.

NetZED

NetZED is a new high-rise condominium green living offering developed by **Tower Labs @MaRS**. It stands for **Net Zero Energy Dwelling** and refers to the balance of energy produced from renewable energy sources and the amount of energy consumed by the dwelling on an annual basis. Green energy in = Energy used.

This energy will be produced by PV and solar thermal collectors on the rooftop of R3 R4 building for the benefit of the NetZED Signature Suite on the top floor. All energy loads in the suite will be electric and a net meter will trade power back and forth between the suite and the common areas.





Beanfield Metroconnect

Bayside Toronto will be home to Toronto's fastest residential internet.

With Beanfield Metroconnect leading the way on the technology front, Bayside Toronto will become home to one of the top 7 most sophisticated networks in the world. An ultra-high-speed, ultra-broadband fiber-optic network will deliver unheard-of Internet speeds to residential and commercial customers. This new wireless network will allow for wireless speeds up to 100 megabits anywhere on Waterfront Toronto lands; it will link to an innovative community web-portal where local residents and businesses will connect.

All users in this "Intelligent Community" will have the freedom to buy services from any provider that opts to connect to this network.



Toronto was recently named the 2014 Intelligent Community of the Year by the Intelligent Community Forum (ICF)



WATERFRONTToronto

Private & Confidential. For internal use only. All illustrations are preliminary and artist's concept.



AQUALINA

AT BAYSIDE TORONTO

AQUALINA Ripples With Overwhelming Success

As the first condominium residence in the master planned Bayside Toronto Community on the city's waterfront, AQUALINA has met with enormous market acceptance. In fact, 86% of the exceptional residences were sold within 6 months of opening for sale in June 2013, and interest in purchasing condominium residences here continues to be extremely strong.

Clearly, Waterfront Toronto and the Bayside community are being warmly welcomed and the opportunity to own in the largest revitalization project in North America - along Toronto's inner harbor has strong drawing power.



WATERFRONTToronto

Private & Confidential. For internal use only. All illustrations are preliminary and artist's concept.

AQUAVISTA

AT BAYSIDE TORONTO

Distinctive, Elegant, Memorable The AQUAVISTA Name & Logo

When naming the much anticipated second residence in the Bayside Toronto Community, it made sense to build on and leverage the success of the first phase AQUALINA . AQUAVISTA was selected as a result, with “Aqua” referencing water, and “Vista” referring to the magnificent lake views delivered in the majority of suites in this building.

The typeface and colours chosen echo those used to position AQUALINA, so that people can quickly associate the two buildings as belonging to the same master planned community. The use of blues is clearly a reference to the waterside location; the clean sans serif typeface is meant to reflect the modern architectural language of the building itself. The “Bayside Toronto” addition works to support the overall community brand.





Introducing AQUAVISTA at Bayside Toronto

Designed by Arquitectonica

As the second condominium to join the master planned Bayside Toronto community emerging along the city's waterfront, AQUAVISTA echoes the exceptional features of its predecessor - AQUALINA.

Envisioned by internationally acclaimed Arquitectonica of New York City, the architecturally significant terraced design features 230 noteworthy 1, 2 and 3 bedroom residences, with suite windows, balconies and terraces oriented to maximize sight-lines towards the lake.

The pedestrian friendly streetscaping along Merchants' Wharf bordering AQUAVISTA will offer premium retail, bringing year-round vitality, convenience and energy to this neighbourhood.

AQUAVISTA at Bayside will be an energy efficient and environmentally friendly condominium, pursuing LEED® Platinum Certification.

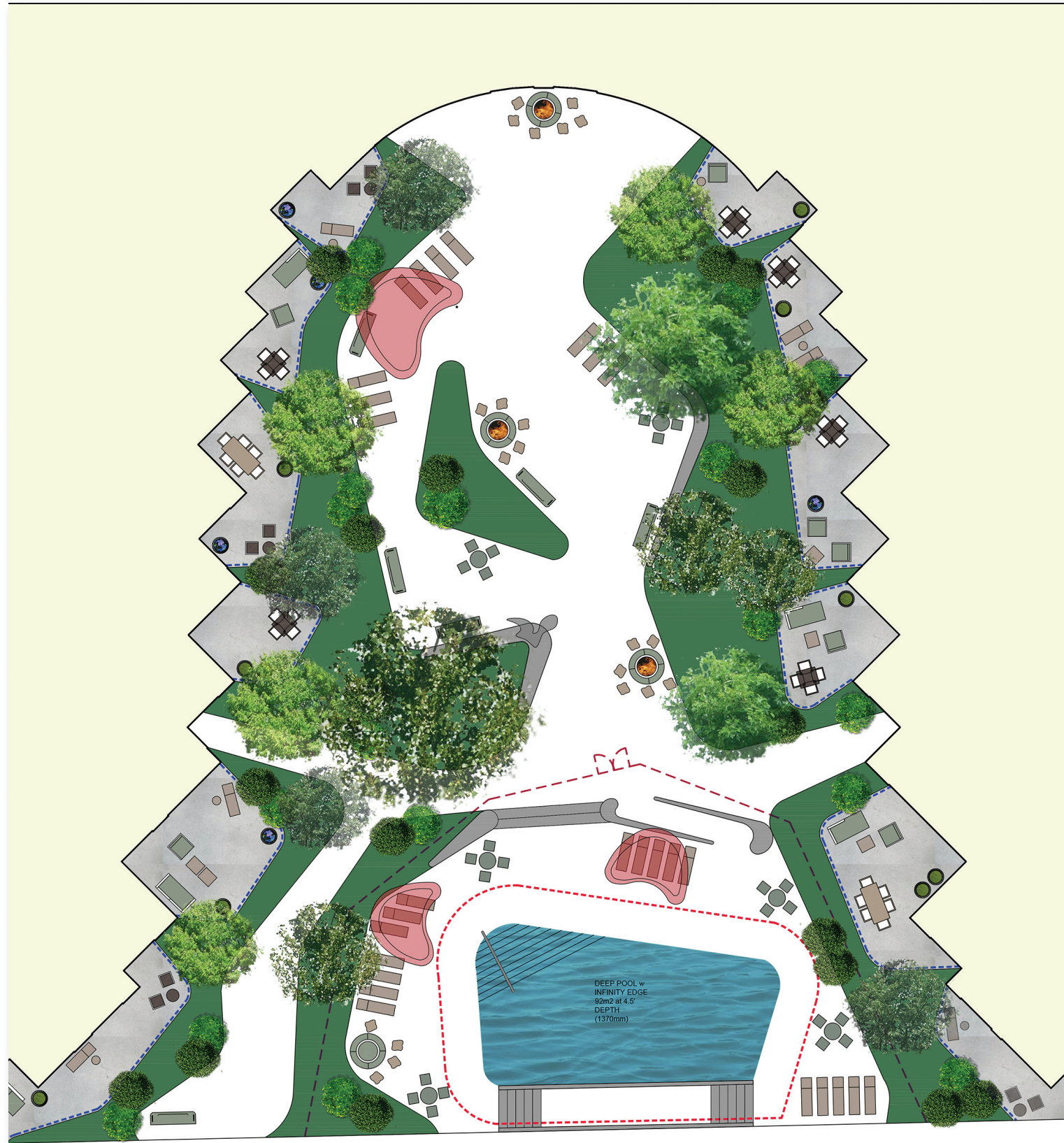


WATERFRONTToronto

Private & Confidential. For internal use only. All illustrations are preliminary and artist's concept.

AQUAVISTA MARKETING STRATEGY OVERVIEW | July 2014





Second Level Vista Deck Rooftop Amenity Space

A central second level rooftop “Vista Deck” with soothing views overlooking Toronto’s inner harbor will include multiple lounging and conversation areas, sun deck, private dining alcove and an infinity swimming pool.



AQUAVISTA

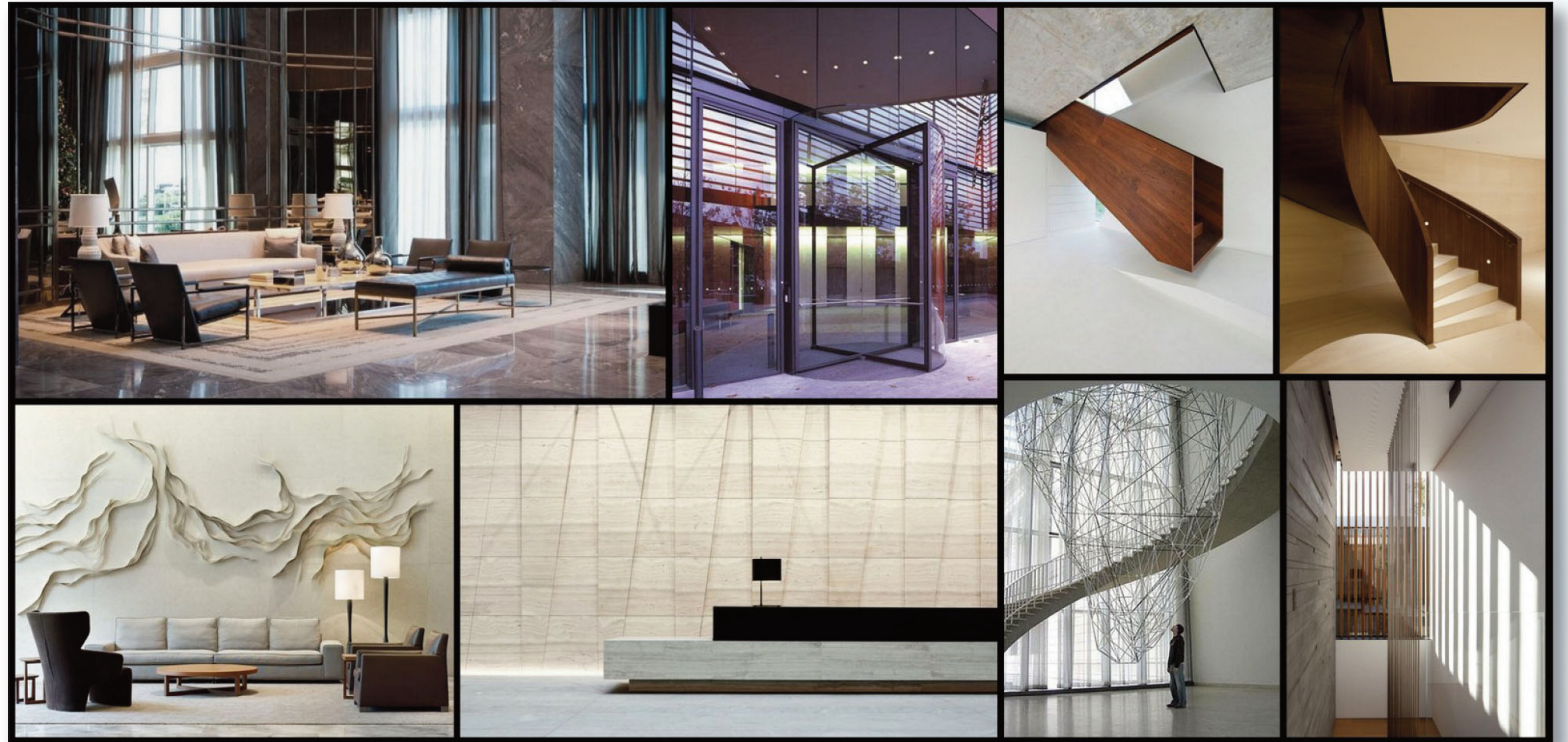


AQUAVISTA Interior Design

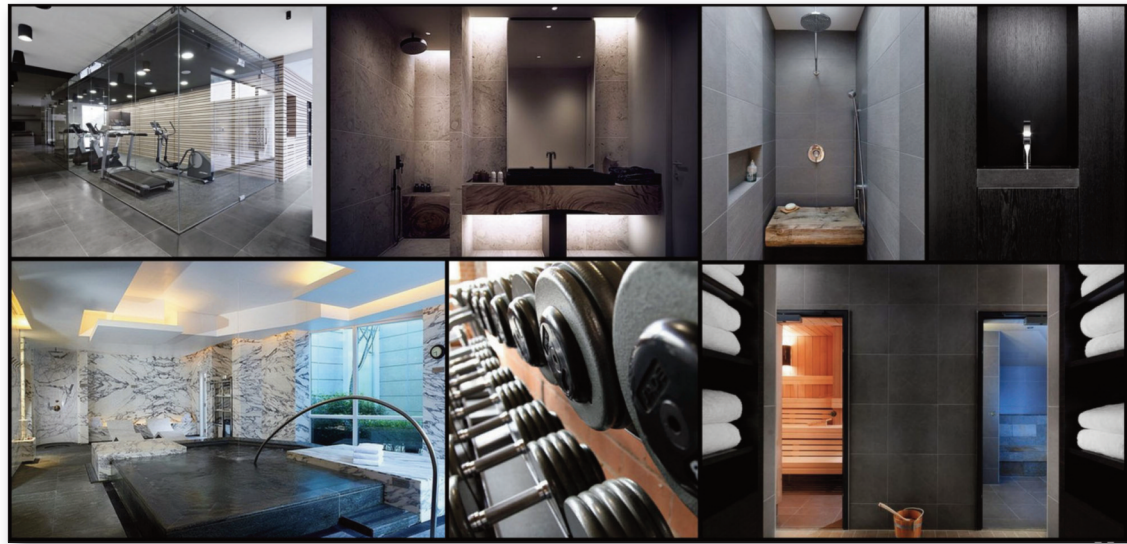
A Sophisticated Design Vision From II BY IV Design Associates

Following their extraordinarily creative design work on AQUALINA's north and south lobbies, recreational spaces and common areas – II BY IV Design Associates has again been selected to create the vision for the interior spaces of AQUAVISTA.

They have been charged with developing a contemporary design-forward look and feel, similar to that of AQUALINA. Currently, II BY IV is in the process of designing the east and west lobbies, and on the lower level – a sophisticated Party Room, Theatre, Health and Fitness Centre, Spinning Room, Yoga Studio, Steam Rooms, Change Rooms and common area spaces.



Lobby Area



Fitness Spa Area



Amenity Area



Exterior Terrace Area



Artscape – A Not-For-Profit Organization, Making Space for Creativity and Transforming Communities



Artscape is a not-for-profit urban development organization that makes space for creativity and transforms communities. Their work involves clustering creative people together in real estate projects that also advances multiple public policy objectives, private development interests, community and neighbourhood aspirations and philanthropic missions. They're recognized as leaders in creative place-making, a practice that leverages the power of art, culture and creativity to catalyze change, growth and transformation of communities.

Adding to AQUAVISTA'S cachet, will be its designation as an Artscape hub; more than 80 artists and creative practitioners in residence will infuse the community with an air of art, culture and creativity.



AQUAVISTA Suite Mix

Aquavista Suite Mix

As of July 10, 2014

Unit Type	Total Units	% Total Units	Total SF	Avg SF	% Total SF	Min SF	Max SF
1B	82	36%	45,538	555	22%	469	660
1B+D	62	27%	41,543	670	20%	625	748
2B	36	16%	32,141	893	16%	552	1154
Subtotal	180	78%	119,222	662	58%	469	1,154
Signature	44	19%	68,830	1,564	34%	1,039	2,017
Duplex	6	3%	17,053	2,842	8%	2,065	3,362
Subtotal	50	22%	85,883	1,718	42%	1,039	3,362
Total	230	100%	205,105	892	100%	469	3,362

Note: 44 Signature suites and 6 Duplex suites can all be configured as 3 Bedroom suites for a total of 50 suites (22% of total suite count)



AQUAVISTA Low End Of Market Suite Suite Mix

Aquavista Low End of Market Suite Mix

As of July 10, 2014

Type	Size Limit (sm)	Size Limit (sf)	Unit Type	Size	Number	Total
Bachelor	46.5	500			0	0
1 Bedroom	60.4	650	1A	469	5	
			1B	469	2	
			1BR	469	2	
			1BR	475	2	
			1C	475	2	
			1D	503	5	
			1E	514	3	
			1F	514	4	
			1G	520	2	
			1H	535	2	
			1J	540	1	
			1K	540	3	
			1L	541	4	
			1M	545	5	
			1N	551	3	
			1P	552	1	
			1A+M	557	4	
			1Q	557	4	
			1R	565	4	
			1S	581	4	
			1U	586	2	
			1T	598	5	
			1V	601	4	
			1W	610	3	
			1X	634	5	
			1C+D	635	5	
			1D+D	640	3	
1E+M	640	1				
1F+D	647	4				
1G+D	647	4	98			
2 Bedroom	79	850	2A	751	4	
			2B	769	5	
			2D	814	5	14
3 Bedroom	93	1,001			0	0
Total					112	
Total Suites in the Building					230	
Total % of Low End					49%	



AQUAVISTA Suite Grid proposed as of July 10, 2014

	1	2	3	4	5	6	7	8	9	10	11	12	13	14	15	16	17	18	19
12	2K W 1,045		PH3 WSE 2,797					PH8 SE 1,904	PH9 E 3,189	PH10 E 3,341		PH12 E 2,065						PH18 E 4,142	
11	2K W 1,045		S14 SE 2,624					2N SE 1,154	S3 S 1,140	S2 S 1,088		S7 SW 1,305						S15 ESW 2,634	
10	1H+D W 659		S13 WSE 1,748		1A+M SE 557	1R SE 565	1Z SE 726	1F SE 514	S6 S 1,287	S8 S 1,374	1L SW 541	1J+D SW 660	1Q SW 557		1F+D SW 647			S12 ESW 1,735	
9	1H+D W 659		S13 WSE 1,748		1A+M SE 557	1R SE 565	1Z SE 726	1F SE 514	S6 S 1,287	S8 S 1,374	1L SW 541	1J+D SW 660	1Q SW 557		1F+D SW 647			S12 ESW 1,735	
8	1H+D W 659		S13 WSE 1,748		1A+M SE 557	1R SE 565	1Z SE 726	1F SE 514	S6 S 1,287	S8 S 1,374	1L SW 541	1J+D SW 660	1Q SW 557		1F+D SW 647			S12 ESW 1,735	
7	1H+D W 659		S13 WSE 1,748		1A+M SE 557	1R SE 565	1Z SE 726	1F SE 514	S6 S 1,287	S8 S 1,374	1L SW 541	1J+D SW 660	1Q SW 557		1F+D SW 647			S12 ESW 1,735	
6	1L+D W 680	1M+D W 685	S10 WSE 1,518	1K+D SE 661	2A SE 751	2B SE 769	2D SE 814	1G+D SE 647	S6A S 1,386	S8A S 1,468	1V SW 601	2E SW 854	1Q+D SW 727	2F SW 881	S4 SW 1,246	S11 SW 1,806	1T NE 598	1C+D E 635	1X E 634
5	1L+D W 680	1M+D W 685	S10 WSE 1,518	1K+D SE 661	2A SE 751	2B SE 769	2D SE 814	1G+D SE 647	S6A S 1,386	S8A S 1,468	1V SW 601	2E SW 854	1Q+D SW 727	2F SW 881	S4 SW 1,246	S11 SW 1,806	1T NE 598	1C+D E 635	1X E 634
4	1L+D W 680	1M+D W 685	S10 WSE 1,518	1K+D SE 661	2A SE 751	2B SE 769	2D SE 814	1G+D SE 647	S6A S 1,386	S8A S 1,468	1V SW 601	2E SW 854	1Q+D SW 727	2F SW 881	S4 SW 1,246	S11 SW 1,806	1T NE 598	1C+D E 635	1X E 634
3	1L+D W 680	1M+D W 685	S10 WSE 1,518	1K+D SE 661	2A SE 751	2B SE 769	2D SE 814	1G+D SE 647			1V SW 601	2E SW 854	1Q+D SW 727	2F SW 881	S4 SW 1,246	S11 SW 1,806	1T NE 598	1C+D E 635	1X E 634
2	1L+D W 680	1M+D W 685	S10 WSE 1,518	1K+D SE 661	1P SE 552	2B SE 769	2D SE 814				1J SW 540	2E SW 854	1Q+D SW 727	1E+M SW 640	S4 SW 1,246	S11 SW 1,806	1T NE 598	1C+D E 635	1X E 634
Suite	11	5	11	5	9	9	9	10	9	9	9	11	9	5	9	5	5	11	5
SF	8,126	3,425	20,003	3,305	5,784	6,105	6,974	7,702	13,635	14,329	5,108	10,280	5,863	4,164	8,818	9,030	2,990	16,891	3,170



AQUAVISTA Suite Grid proposed as of July 10, 2014

20	21	22	23	24	25	26	27	28	29	30	31	32	33	34	35	36	37	38
			PH23 E 2,412				2M NE 1,092	1E N 514	1K N 540							1Y N 658	1N N 551	2L NW 1,065
			S5 E 1,254				2M NE 1,092	1E N 514	1K N 540	1G N 520	1C N 475	1B N 469	1BR N 469	1BR N 475	1U N 586	1H N 535	1N N 551	2L NW 1,065
	1D+D E 640	1W E 610	1S E 581		1P+D E 724	1R+D E 748	2H NE 966	1E N 514	1K N 540	1G N 520	1C N 475	1B N 469	1BR N 469	1BR N 475	1U N 586	1H N 535	1N N 551	2L NW 1,065
	1D+D E 640	1W E 610	1S E 581		1P+D E 724	1R+D E 748	2H NE 966											
	1D+D E 640	1W E 610	1S E 581		1P+D E 724	1R+D E 748	2H NE 966											
		2G E 941	1S E 581		1P+D E 724	1R+D E 748	2H NE 966											
1N+D E 695	1D E 503	1M NE 545	1A N 469															
1N+D E 695	1D E 503	1M NE 545	1A N 469															
1N+D E 695	1D E 503	1M NE 545	1A N 469															
1N+D E 695	1D E 503	1M NE 545	1A N 469															
1N+D E 695	1D E 503	1M NE 545	1A N 469															
5	8	9	11	0	4	4	6	3	3	2	2	2	2	2	2	3	3	3
3,475	4,435	5,496	8,335		2,896	2,992	6,048	1,542	1,620	1,040	950	938	938	950	1,172	1,728	1,653	3,195





Bayside Toronto Community & AQUAVISTA Marketing Tactics

Bayside Toronto Hoarding and Signage



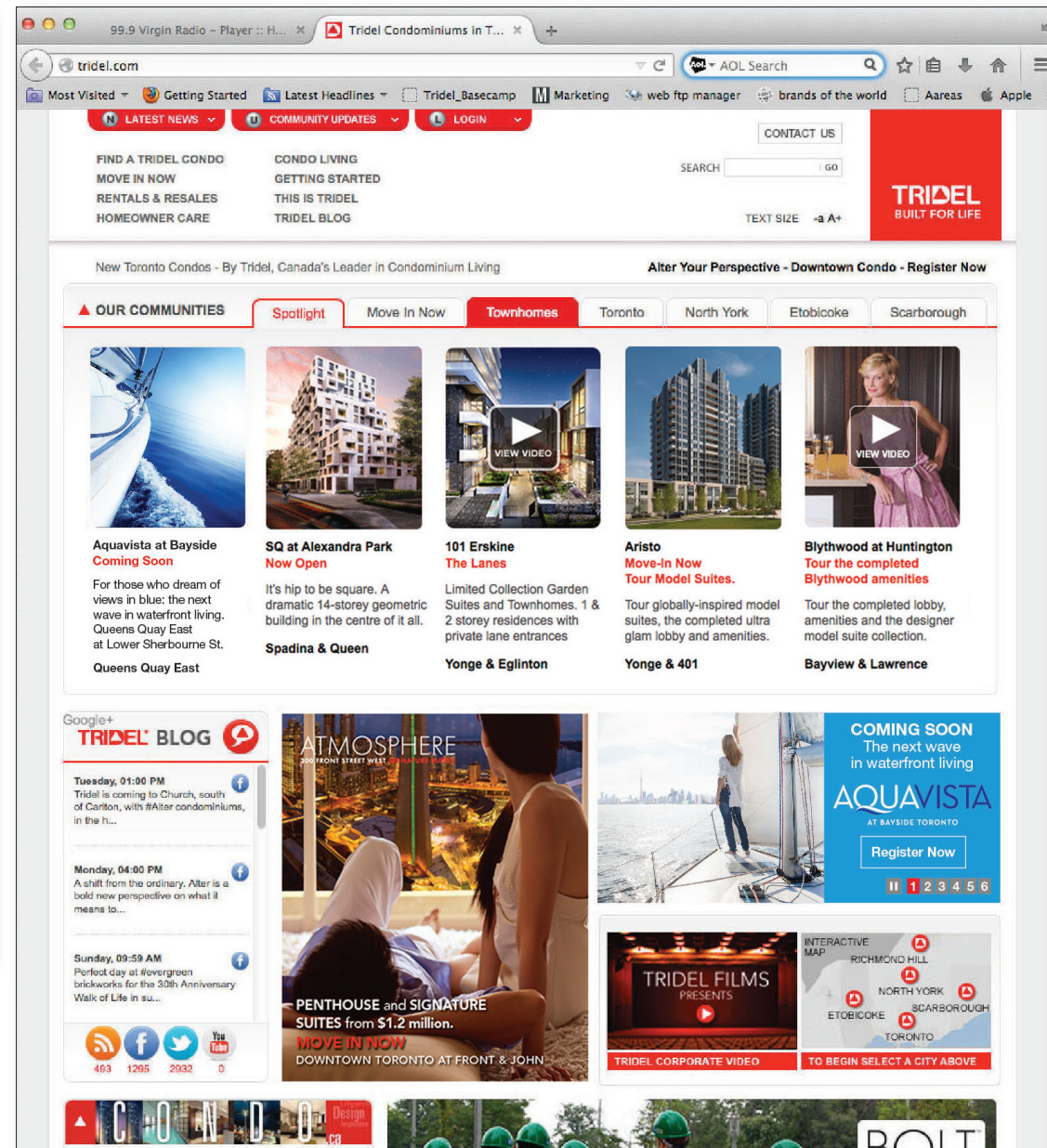
AQUAVISTA Digital Marketing

Digital Marketing will be a major presence in the launch programs for the AQUAVISTA condominium.

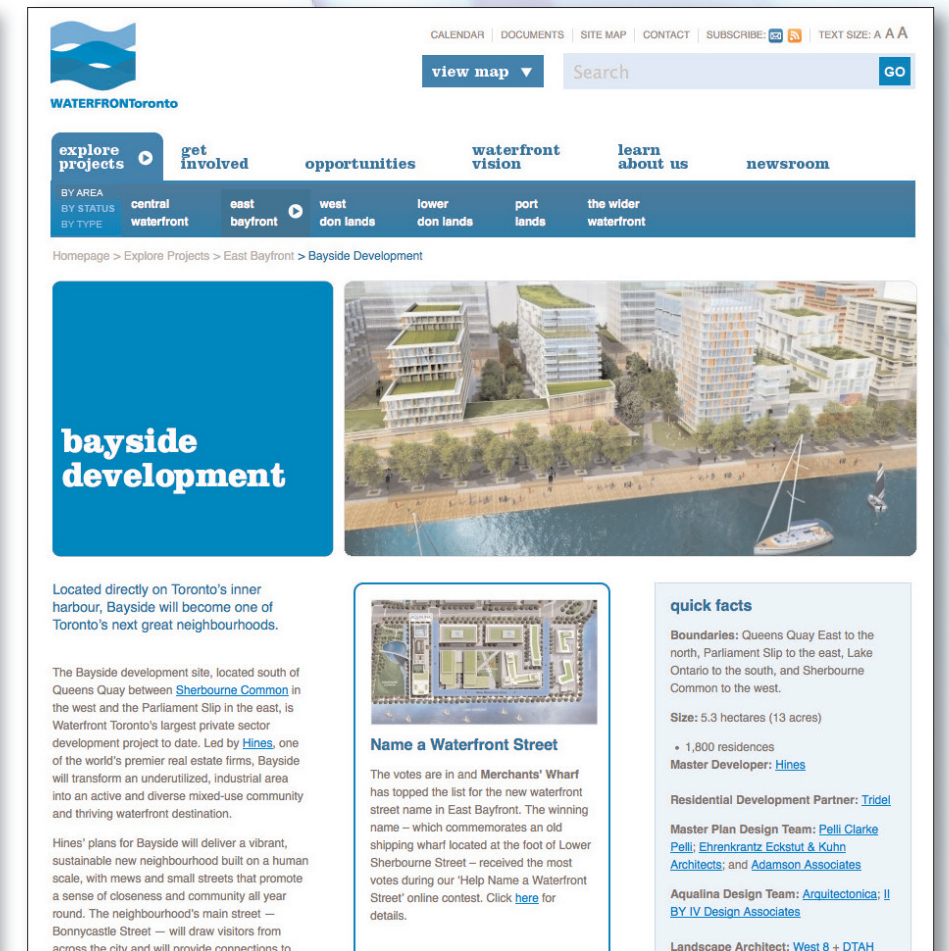
Tridel's proprietary digital marketing system will be the driving force. Their robust website, SEO, extensive databases of Realtors and prospects, analytical capabilities and best-practice use of email deployment will create the necessary awareness and interest in obtaining large numbers of qualified registrations for viewing and purchasing.



Hines website

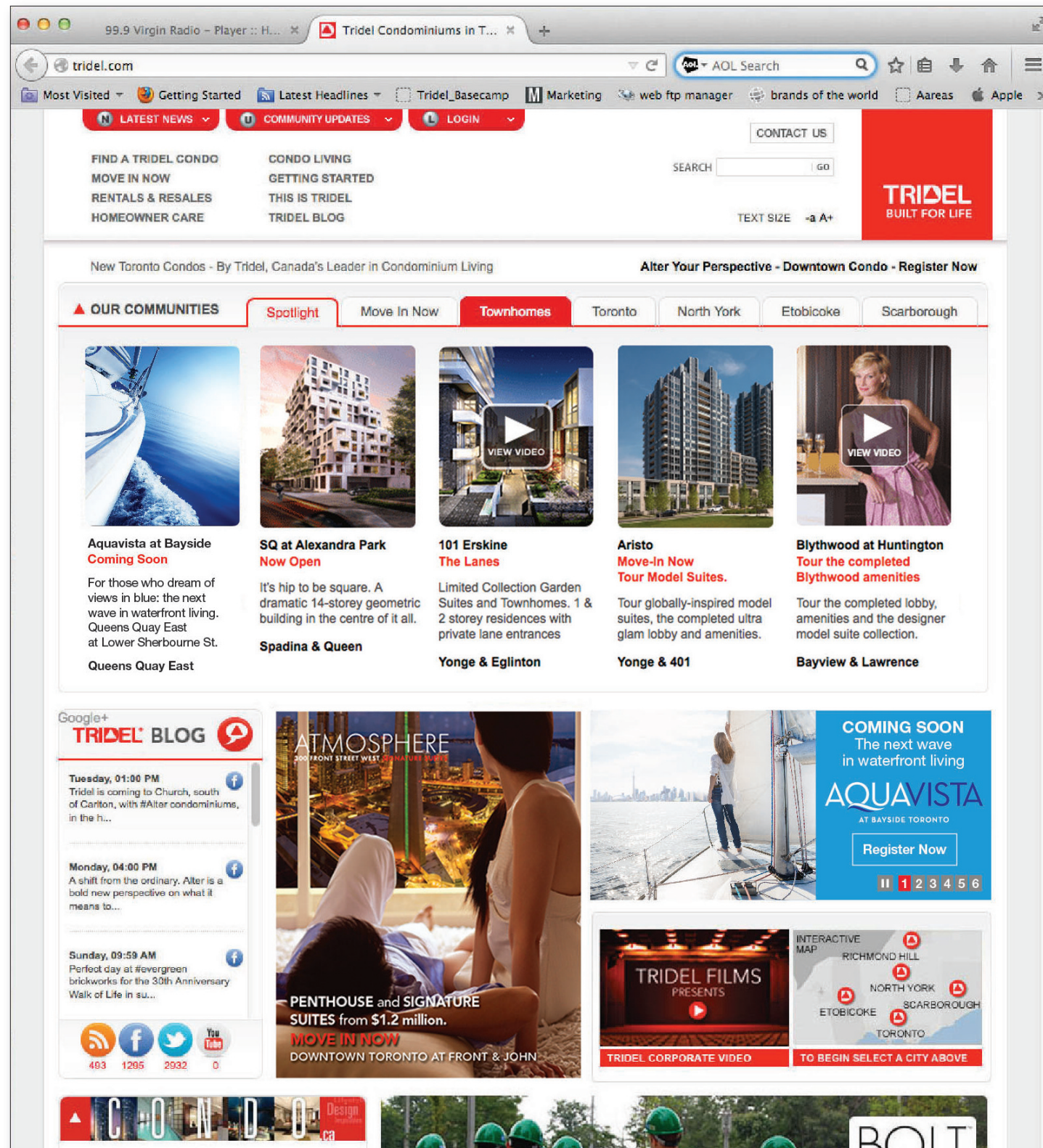


Tridel website



Waterfront Toronto website





AQUAVISTA Preview Website & Registration

The first marketing tool to be deployed is a Preview micro-web site on tridel.com.

This will include a registration tile at the top left of Tridel's web home page along with a larger information banner and an Asynchronous JavaScript and XML (AJAX) rotating banner. These will be linked to a preview landing page with a detailed outline and renderings of the community, locator map and a further link to the registration page. Upon completing and submitting the registration, an auto reply will be immediately deployed to all registrants.

AQUAVISTA Preview Website & Registration

COMING SOON


AQUAVISTA

AT BAYSIDE TORONTO

For those who dream of views in blue: indulgent water's edge condominiums.

Queens Quay East at Lower Sherbourne St.

[Register Now](#)



The next wave in waterfront living takes shape.


Following the tremendous success of AQUALINA at Bayside, Tridel and Hines introduces AQUAVISTA at Bayside, the second condominium to join the masterplanned Bayside Toronto community emerging along the city's waterfront.

Envisioned by internationally acclaimed Arquitectonica of New York City, this ultra modern glass building has been ideally positioned to offer optimal water views from most suites and will be home to a collection of generously sized residences.


AQUAVISTA will feature an outstanding array of amenities and recreational spaces, including a stunning plunge pool with sun deck and lounging areas.

AQUAVISTA at Bayside will seek LEED® Platinum Certification.


[Register now](#) for AQUAVISTA at Bayside, Toronto



[Google Map](#)



May Tsui
Broker
Del Realty Inc.
Brokerage
[Email Me](#)



Tara Stone
Sales Representative
Del Realty Inc.
Brokerage
[Email Me](#)

BAYSIDE TORONTO | A HINES MASTER PLANNED COMMUNITY.
Redefining life on the water's edge.

Tridel®, Tridel Built for Life®, Tridel Built Green. Built for Life® are registered trademarks of Tridel and used under license. ©Tridel 2014. All rights reserved. E. & O.E. June 2014.

AQUAVISTA Database Email



Tridel

tridel.com/communities/tenyork/

COMING SOON TO TORONTO'S WATERFRONT

AQUAVISTA at Bayside Toronto

Indulgent water's edge condominiums on Toronto's waterfront

[CLICK HERE TO REGISTER FOR CONDOMINIUM PREVIEW](#)





The next wave in waterfront living takes shape.

Following the tremendous success of AQUALINA at Bayside, Tridel and Hines introduces AQUAVISTA at Bayside, the second condominium to join the masterplanned Bayside Toronto community emerging along the city's waterfront.

Envisioned by internationally acclaimed Arquitectonica of New York City, this ultra modern glass building has been ideally positioned to offer optimal water views from most suites and will be home to a collection of generously sized residences.

AQUAVISTA will feature an outstanding array of amenities and recreational spaces, including a stunning plunge pool with sun deck and lounging areas.

Energy efficient and environmentally focused by design, AQUAVISTA at Bayside will seek LEED® Platinum Certification – the highest rating possible within the LEED® Certification system.

[Register now](#) for AQUAVISTA at Bayside, Toronto

Tridel Talks AQUAVISTA • [AQUAVISTA on Facebook](#) • [AQUAVISTA on Twitter](#)

BAYSIDE TORONTO | A HINES MASTER PLANNED COMMUNITY.
Redefining life on the water's edge.



AQUAVISTA Information Landing Page



COMING SOON

AQUAVISTA

AT BAYSIDE TORONTO

For those who dream of views in blue: indulgent water's edge condominiums.

The next wave of waterfront living takes shape at Queens Quay East at Lower Sherbourne St.

*** FIRST NAME**

*** LAST NAME**

*** EMAIL ADDRESS**

PHONE #

I consent to receive electronic messages from Deltera Inc. and/or companies that market residential condominium developments being developed from time to time under the Tridel® brand.

ARE YOU A REALTOR?
 YES

COMMENTS

[REGISTER NOW](#)

This consent is being solicited by Deltera Inc. on behalf of companies that market residential condominium developments being developed from time to time under the Tridel® brand. 4800 Dufferin St., Toronto, ON, M3H 5S9. ask@tridel.com. You may withdraw your consent at any time. The collection, use and disclosure of personal information of individuals by members of the Tridel Group of Companies is in accordance with the Tridel Privacy Policy "Tridel", Tridel Built for Life®, and Tridel Built Green. Built For Life.® are registered trademarks of Tridel and used under license. All rights reserved. E. & O.E. JUNE 2014.



AQUAVISTA Registration Form



WATERFRONT Toronto

Private & Confidential. For internal use only. All illustrations are preliminary and artist's concept.

AQUAVISTA MARKETING STRATEGY OVERVIEW | July 2014



AQUAVISTA Preview Print Advertising Campaign



AQUAVISTA Toronto Star Banner Ad



AQUAVISTA Toronto Star Banner Ad



AQUAVISTA Toronto Star Banner Ad



AQUAVISTA Toronto Star Banner Ad



AQUAVISTA Preview Print Advertising Campaign

AQUAVISTA
AT BAYSIDE TORONTO
DOCKING SOON

Hines **TRIDEL**
BUILT FOR LIFE

*Lap pool.
Aquavista.*

tridel.com

AQUAVISTA 3 Page Ad

AQUAVISTA
AT BAYSIDE TORONTO
DOCKING SOON

Hines **TRIDEL**
BUILT FOR LIFE

*Standing room only.
Aquavista.*

Toronto's next great neighbourhood
begins a new chapter on the water's edge.

Set your sights on Phase Two of Toronto's next great waterfront address. Now appearing on the horizon, Aquavista at Bayside is located in a master planned community on the city's waterfront. Located directly on Lake Ontario and surrounded by greenspace, landmark attractions, accessible transit and cultural flavour, this sustainable neighbourhood will soon illuminate the Harbourfront.

BAYSIDE | A HINES MASTER PLANNED COMMUNITY. *Redefining life on the water's edge.*

A Tridel Built Green, Built for Life® community. *Price and specifications are subject to change without notice. Illustrations are artist's concept only. **Source: The City of Toronto Official Plan and the Agincourt Secondary Plan, a future bus and subway terminal or other transit related uses are proposed for this location. Building and view not to scale. Tridel®, Tridel Built for Life®, Tridel Built Green, Built for Life® are registered trademarks of Tridel and used under license. ©Tridel 2014. All rights reserved. E&O.E. March 2014.

Facebook.com/Tridel Twitter.com/Tridel tridel.com

AQUAVISTA Preview Print Advertising Campaign



AQUAVISTA 3 Page Ad



AQUAVISTA Preview Online Advertising Campaign

<p>AQUAVISTA AT BAYSIDE TORONTO DOCKING SOON</p> <p><i>Pedestrian crossing. Aquavista.</i></p> <p>BAYSIDE TORONTO A HINES MASTER PLANNED COMMUNITY.</p>	Hines	TRIDEL BUILT FOR LIFE
<p>AQUAVISTA AT BAYSIDE TORONTO DOCKING SOON</p> <p><i>Lap pool. Aquavista.</i></p> <p>BAYSIDE TORONTO A HINES MASTER PLANNED COMMUNITY.</p>	Hines	TRIDEL BUILT FOR LIFE
<p>AQUAVISTA AT BAYSIDE TORONTO DOCKING SOON</p> <p><i>Daily commute. Aquavista.</i></p> <p>BAYSIDE TORONTO A HINES MASTER PLANNED COMMUNITY.</p>	Hines	TRIDEL BUILT FOR LIFE
<p>AQUAVISTA AT BAYSIDE TORONTO DOCKING SOON</p> <p><i>Standing room only. Aquavista.</i></p> <p>BAYSIDE TORONTO A HINES MASTER PLANNED COMMUNITY.</p>	Hines	TRIDEL BUILT FOR LIFE

Hines	TRIDEL BUILT FOR LIFE	Hines	TRIDEL BUILT FOR LIFE	Hines	TRIDEL BUILT FOR LIFE	Hines	TRIDEL BUILT FOR LIFE
<p>AQUAVISTA AT BAYSIDE TORONTO DOCKING SOON</p>	<p>AQUAVISTA AT BAYSIDE TORONTO DOCKING SOON</p>	<p>AQUAVISTA AT BAYSIDE TORONTO DOCKING SOON</p>	<p>AQUAVISTA AT BAYSIDE TORONTO DOCKING SOON</p>	<p><i>Daily commute. Aquavista.</i></p>	<p><i>Standing room only. Aquavista.</i></p>	<p><i>Pedestrian crossing. Aquavista.</i></p>	<p><i>Lap pool. Aquavista.</i></p>
BAYSIDE TORONTO A HINES MASTER PLANNED COMMUNITY.		BAYSIDE TORONTO A HINES MASTER PLANNED COMMUNITY.		BAYSIDE TORONTO A HINES MASTER PLANNED COMMUNITY.		BAYSIDE TORONTO A HINES MASTER PLANNED COMMUNITY.	

<p>AQUAVISTA AT BAYSIDE TORONTO DOCKING SOON</p> <p><i>Pedestrian crossing. Aquavista.</i></p> <p>BAYSIDE TORONTO A HINES MASTER PLANNED COMMUNITY.</p>	Hines	TRIDEL BUILT FOR LIFE	<p>AQUAVISTA AT BAYSIDE TORONTO DOCKING SOON</p> <p><i>Daily commute. Aquavista.</i></p> <p>BAYSIDE TORONTO A HINES MASTER PLANNED COMMUNITY.</p>	Hines	TRIDEL BUILT FOR LIFE	<p>AQUAVISTA AT BAYSIDE TORONTO DOCKING SOON</p> <p><i>Standing room only. Aquavista.</i></p> <p>BAYSIDE TORONTO A HINES MASTER PLANNED COMMUNITY.</p>	Hines	TRIDEL BUILT FOR LIFE	<p>AQUAVISTA AT BAYSIDE TORONTO DOCKING SOON</p> <p><i>Lap pool. Aquavista.</i></p> <p>BAYSIDE TORONTO A HINES MASTER PLANNED COMMUNITY.</p>
--	-------	--------------------------	--	-------	--------------------------	---	-------	--------------------------	---



AQUAVISTA Brochure



AQUAVISTA Brochure



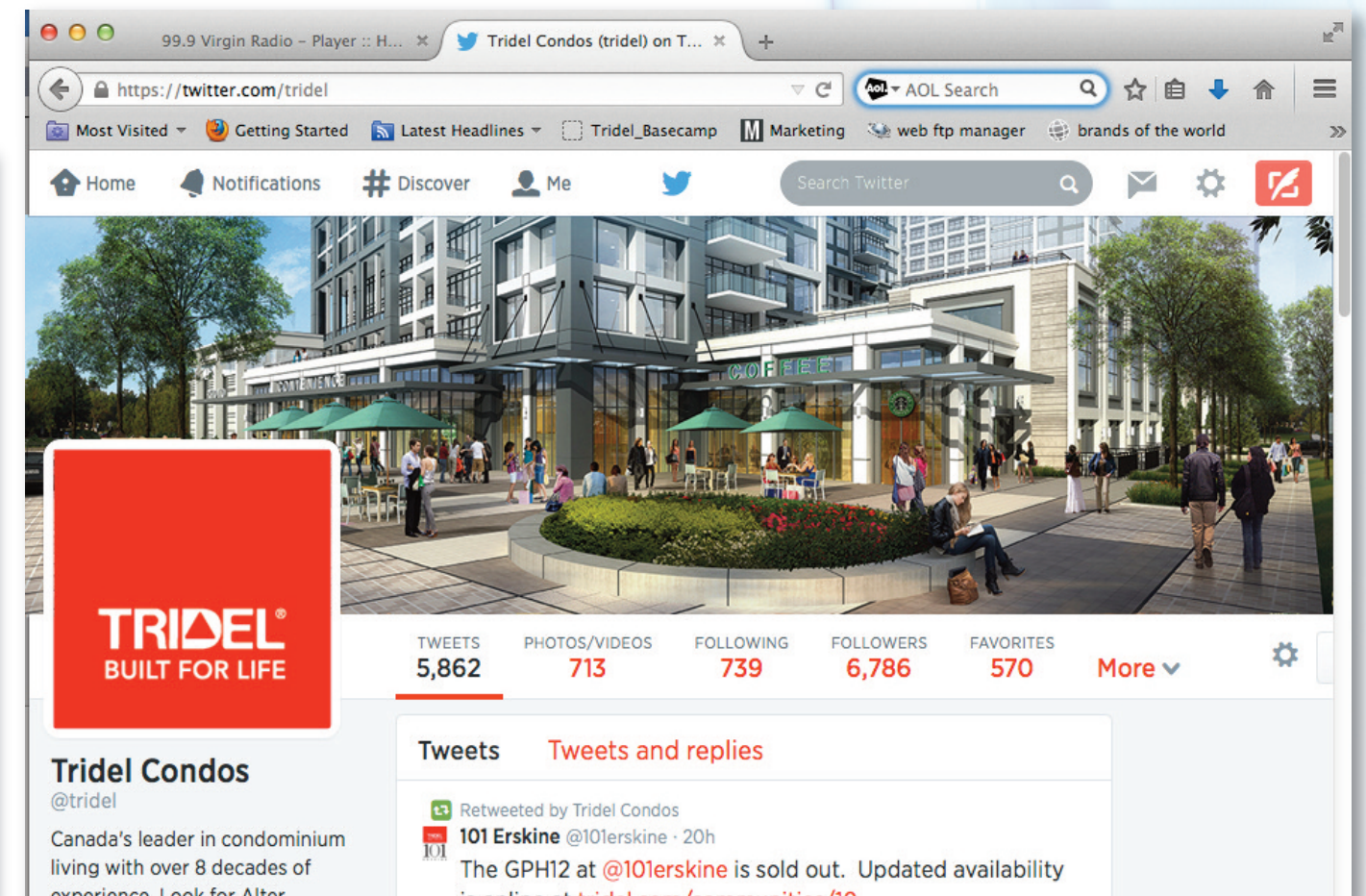
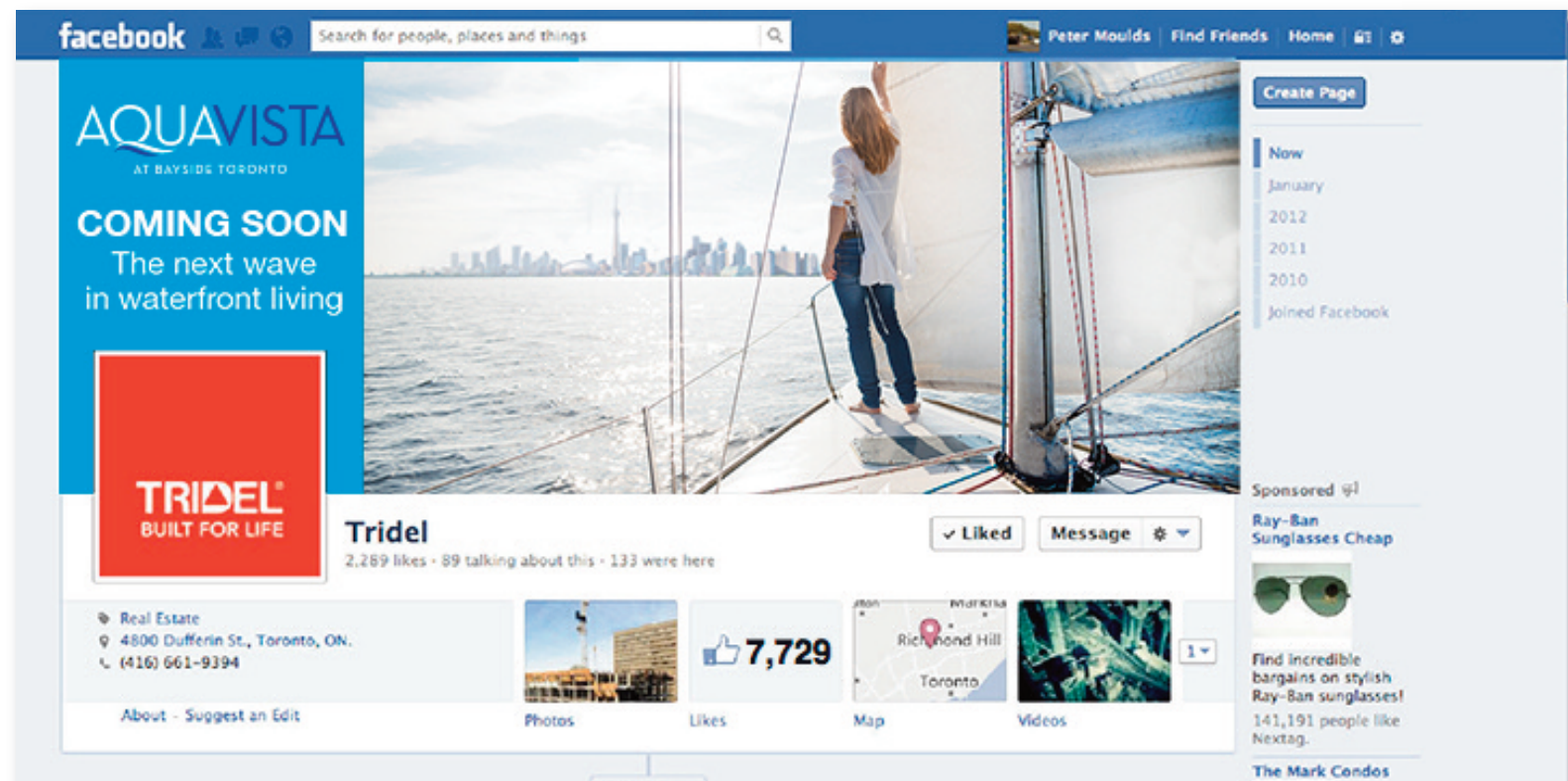
WATERFRONTToronto

Private & Confidential. For internal use only. All illustrations are preliminary and artist's concept.

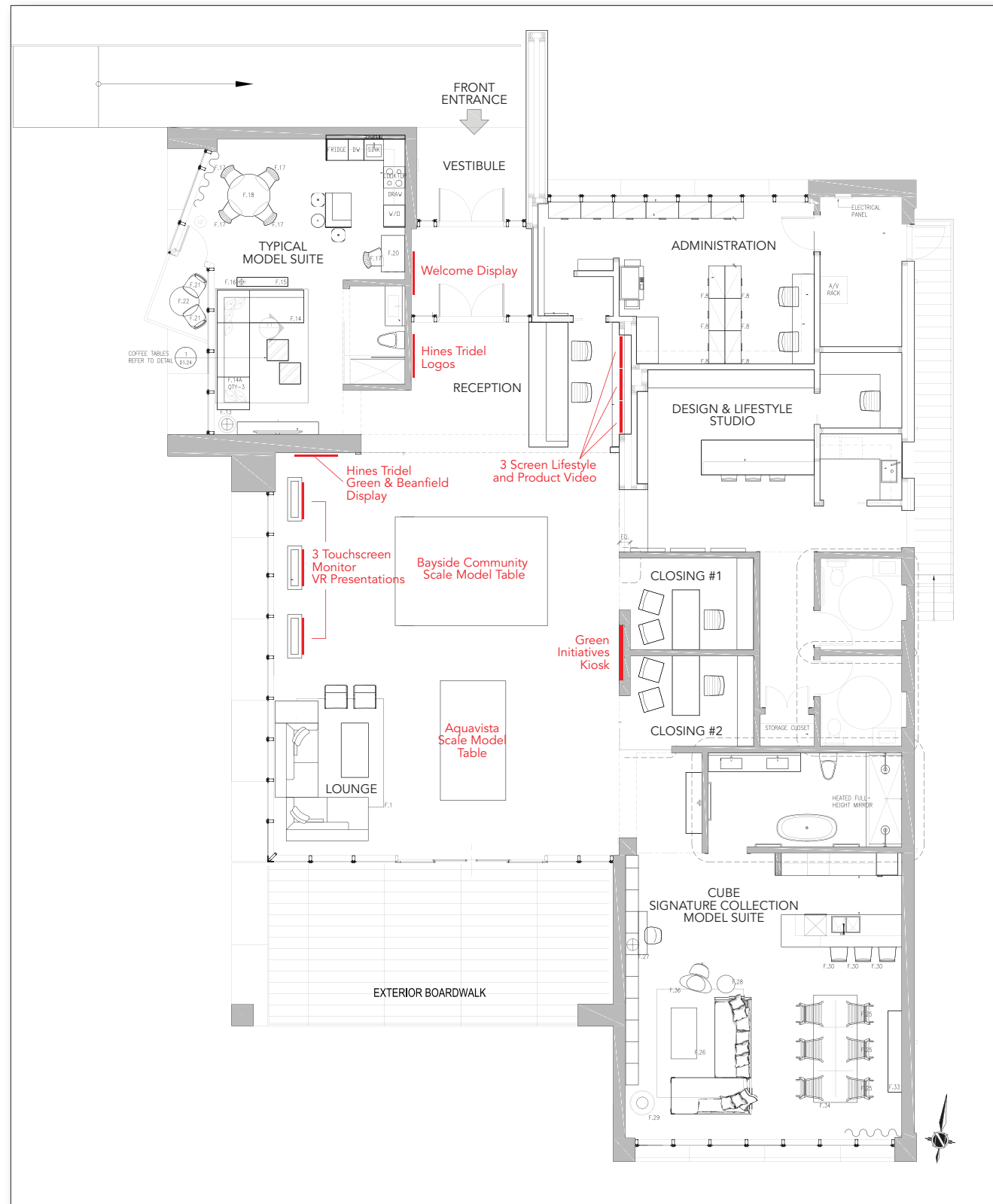


Social Media Strategy

- Tridel's web site – tridel.com – over the last 12 months (July 10, 2013 – July 10, 2014) has had 486,950 unique visitors to the site for an average 40,000 new visitors per month. This is the highest ranked new residential development web site in Canada.
- Tridel's social media updates will be placed on tridel.com homepage – "Tridel Talks" Blog.
- Condo.ca (Tridel's arm's-length Blog – independent editor) has over 17,000 subscribers and features interesting relevant articles
- The Tridel Twitter account (with over 6,786 followers) will be used to populate relevant updates and content.
- Facebook (7,729 Likes) is an extension of Twitter, where additional information and visuals will be shared.
- Bayside and AQUAVISTA videos will be posted on YouTube.
- Active community management, providing users with real-time updates on community and condos.



AQUAVISTA Presentation Centre



5,000 sq. ft. state-of-the-art Presentation Centre with scale models, interactive touchscreen presentations, model suites including a Lifestyle & Design Centre

Technology Lab

- Demonstrates new transition lense glass windows by ViewGlass that respond to light changes, controlled from iPad
- NetZED – Net zero energy dwelling designed so home's energy will be supplied by renewable photovoltaic and solar thermal system installed on the roof of the building
- Illumient renewable energy streetlamps with remote control and monitoring to optimize performance
- Leviton electric vehicle charging station
- Green roof technology with lightweight planting material by Gaia Soil offering exceptional water retention and root growth support

