

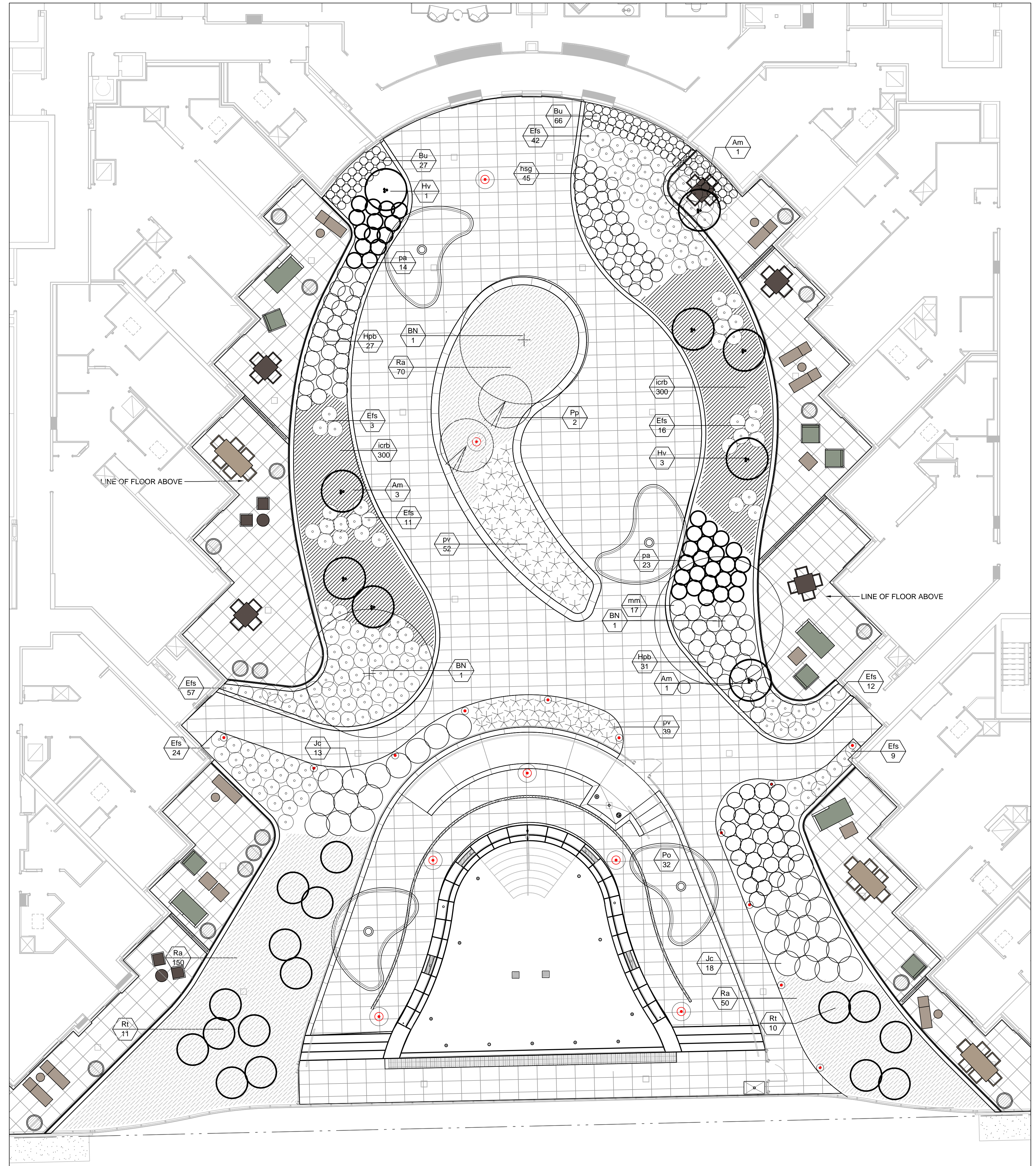
Plant List - 2nd Floor Amenity

Key	Quantity	Botanical Name	Common Name	Size	Condition	Native	Drought Tolerant
Deciduous Trees							
BN	3	Betula nigra Cully	River Birch	60mm	WB Clump	No	Yes
Coniferous Trees							
PP	2	Pinus strobus Pendula	Weeping White Pine	175cm	B&B	Yes	Yes
Deciduous Shrubs							
Ac	5	Amelanchier alnifolia	Servicberry	175cm	15 gal	Yes	Yes
Hp	58	Hydrangea paniculata Bombshell	Bombshell Hydrangea	50cm	3 gal	Yes	Yes
Hv	4	Hammamelis Virginiana	Common Witchhazel	150cm	WB	Yes	Yes
Po	32	Physocarpus opulifolius Burgundy Candy	Ninebark	40cm	3 gal	Yes	Yes
Ra	270	Rhus aromatica Gro-Low	Fragrant Sumac	40cm	3 gal	Yes	Yes
Rt	21	Rhus typhina Tiger Eyes	Tiger Eyes Sumac	100cm	5 gal	Yes	Yes
Coniferous Shrubs							
Jc	31	Juniperus chinensis Gold Coast	Gold Coast Juniper				Yes
Broadleaf Evergreens							
Efs	174	Euonymus fort. Sarcocoe	Sarcocoe Euonymus	1 gal			Yes
Perennials							
pa	37	Perovskia atrip.	Little Spire Russian Sage	1 gal			Yes
hsg	45	Hosta Stained Glass	Stained Glass Hosta	1 gal			Yes
Grasses							
pv	91	Panicum virgatum Cheyenne Sky	Switchgrass	1 gal		Yes	Yes
icrb	600	Imperata cylindrica Red Barron	Japanese Blood Grass	1 gal			Yes

% Native by Species

% Native by Total Quantity

NOTE:
THE REQUIREMENT FOR THE USE OF LOW-WATER AND DROUGHT TOLERANT PLANTS DOES NOT APPLY SINCE THE IRRIGATION SYSTEM RELIES ON WATER HARVESTING AND USES 100% OF NON-POTABLE WATER.



Contractor Must Check And Verify All Dimensions On The Job.
Do Not Scale The Drawings.
All Drawings, Specifications And Related Documents Are The Copyright Of The Architect And Must Be Returned Upon Request.
Reproduction Of Drawings, Specifications And Related Documents In Part Or Whole Is Forbidden Without The Architects Written Permission.
This Drawing Is Not To Be Used For Construction Until Signed By The Architect.
Date:

Janet Rosenberg & Studio
Landscape Architecture and Urban Design
1 416 656 6665 1 416 656 5756 www.jrstudio.co
148 Kenwood Avenue, Toronto Ontario M6C 2S3 Canada

No.:	Revision	Date
1.	Issued for Site Plan Approval to WT	15.01.30
2.	Issued for Site Plan Approval	15.03.04
3.	Waterfront Toronto SPA Submission #2	15.07.08
4.	Toronto SPA Submission #3	15.08.25
5.	Issued for Site Plan Approval	16.02.11
6.	Issued for Coordination	16.08.11



Drawing Title
**Landscape Planting Plan
Amenity Level
(2nd Floor)**

Project
Hines TRIDEL
Aquavista
BAYSIDE, TORONTO
Scale
1:100
Drawn by
CP
Checked by
RB
Project No.
14-117
Date
06/03/14
Drawing No.
L-302

