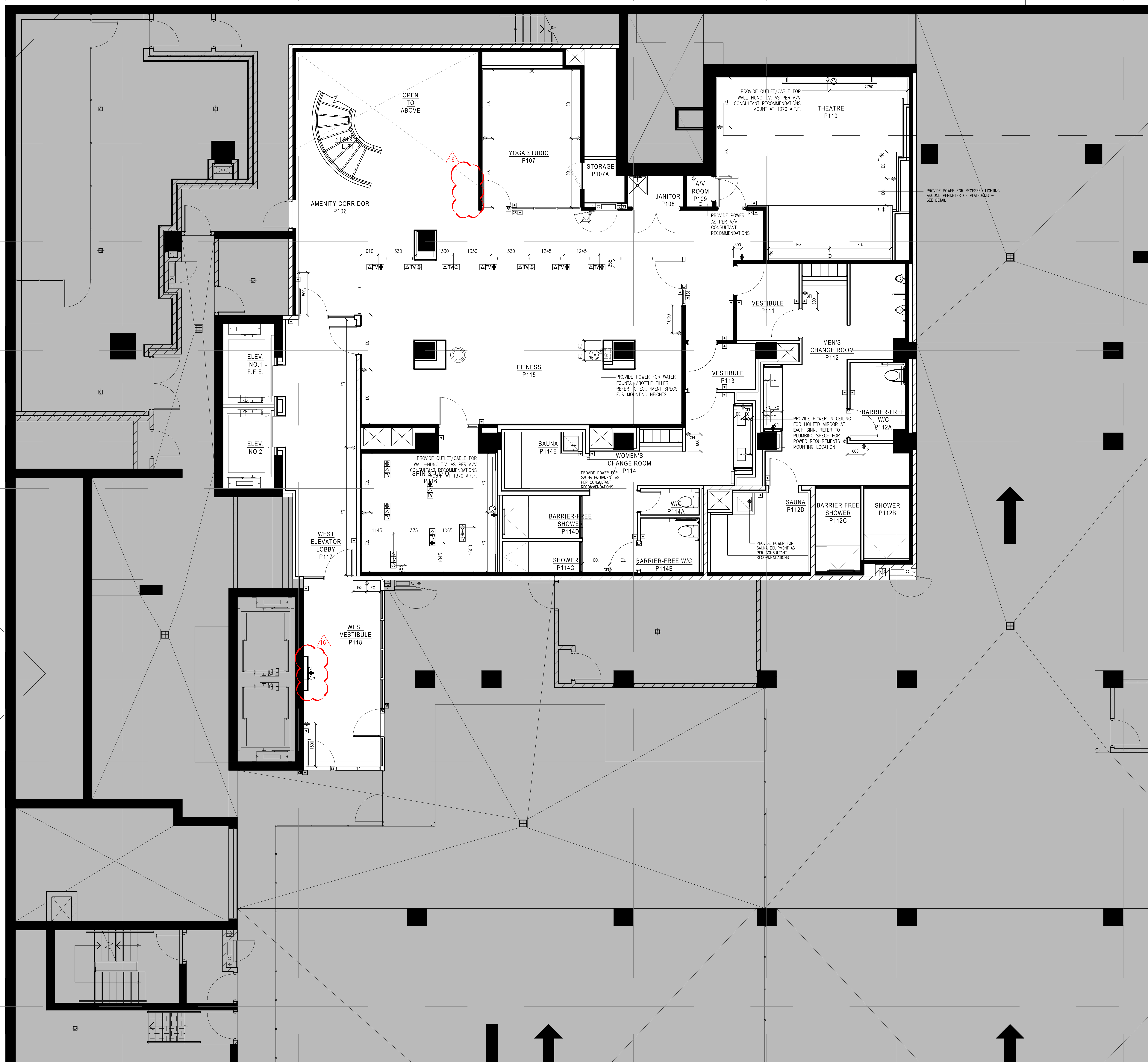


LEGEND : POWER		
SYMBOL	DESCRIPTION	QTY
⊕	120 VOLTS DUPLEX OUTLET TO BE WALL MOUNTED @ 12" A.F.F. O.C. UNLESS OTHERWISE NOTED	--
⊕/G	120 VOLTS DUPLEX OUTLET W/ GROUND FAULT INTERRUPTER TO BE WALL MOUNTED @ 12" A.F.F. O.C. UNLESS OTHERWISE NOTED	--
▲	TELEPHONE OUTLET TO BE WALL MOUNTED AS NOTED U.C. (C&S VOICE)	--
△	DATA OUTLET TO BE WALL MOUNTED (CAT5 DATA)	--
⊕	DEDICATED OUTLET FOR COMPUTER TO BE WALL MOUNTED @ 12" A.F.F. O.C. UNLESS OTHERWISE NOTED	--
⊕	FLOOR MOUNTED DEDICATED OUTLET @ CASH AREA FOR COMPUTER	--
⊕	FLOOR MOUNTED DUPLEX OUTLET	--
▲	FLOOR MOUNTED TELEPHONE OUTLET @ CASH AREA (C&S VOICE)	--
△	FLOOR MOUNTED DATA OUTLET @ CASH AREA (CAT5 DATA)	--
*	POWER REQUIRED	--
⊕	SPEAKER - WIRED TO OFFICE STEREO UNIT. CONTRACTOR TO PROVIDE ONLY IF NONE EXISTS	--
⊕	EXISTING DUPLEX OUTLET AND POWER TO REMAIN	--
⊕	CABLE TELEVISION OUTLET	--
⊕	POWER ACTIVATED DOOR EXIT BUTTON	--
⊕	ELECTRIC STRIKE	--
⊕	CARD READER	--
⊕	AUTOMATIC DOOR OPERATOR PUSH PLATE/BUTTON MOUNTED AT 1050mm	--
⊕	DURESS ALERT PUSH PLATE/BUTTON MOUNTED AT 1050mm	--
⊕	KEYPAD MOUNTED MOUNTED AT 1050mm	--
⊕	CARD READER	--
⊕	INTERCOM MOUNTED AT AT 1050mm	--

- POWER AND COMMUNICATION NOTES**
- POWER AND COMMUNICATION DRAWINGS TO BE USED FOR LOCATION PURPOSES ONLY. REFER TO ELECTRICAL ENGINEERING DRAWINGS FOR DETAILS, SPECIFICATIONS AND REQUIREMENTS.
 - ELECTRICAL AND COMMUNICATION WORK TO COMPLY WITH THE REQUIREMENTS OF THE BUILDING LABELING AND AUTHORITY'S MARKING JURISDICTION.
 - CONTRACTOR TO REPORT DISCREPANCIES BETWEEN ENGINEERING AND DESIGN DRAWINGS TO THE DESIGNER AND ELECTRICAL ENGINEER PRIOR TO COMMENCEMENT OF WORK.
 - SUBMIT REQUIRED CHANGES TO THE DESIGNER FOR APPROVAL PRIOR TO COMMENCEMENT OF WORK.
 - DIMENSIONS OF SERVICES ARE TAKEN AT THE CENTRE OF THE SERVICE OR GROUP OF SERVICES, UNLESS OTHERWISE NOTED.
 - DIMENSIONS FROM A PARTITION ARE TAKEN FROM FACE OF PARTITION TO CENTRE OF THE SERVICE OR GROUP OF SERVICES, UNLESS OTHERWISE NOTED.
 - DIMENSIONS FROM THE PERIMETER OF THE BUILDING ARE TAKEN FROM FACE OF THE CONVECTOR OR BASE BUILDING ELEMENT TO CENTRE OF THE SERVICE OR GROUP OF SERVICES, UNLESS OTHERWISE NOTED.
 - REFER TO ENGINEERING DRAWINGS FOR SPECIFICATION OF COVER PLATE, RECEPTACLE TYPE AND COLOUR. REFER TO DESIGNER DRAWINGS FOR MOUNTING HEIGHT.
 - WHERE POWER AND COMMUNICATION SERVICES ARE ADJACENT ON FLAT, COVERED COVER PLATES SHALL BE USED.
 - CONTRACTOR TO ENSURE THAT TRADES HAVE COMPLETED THEIR PORTION OF THE WORK BEFORE DRAWING UP FROM SIDE OF THE JOBS. THIS IS TO INCLUDE INSPECTING AS REQUIRED BY LOCAL AND PROVINCIAL BY-LAWS AND BUILDING CODES.
 - SOUND BATS IN PARTITIONS ARE TO CONTINUE BEHIND POWER AND TELEPHONE OUTLETS WITHOUT INTERRUPTION.
 - STAGGER OUTLETS OCCURRING ON OPPOSITE SIDES OF THE SAME PARTITION TO MAINTAIN ACOUSTICAL INTEGRITY.
 - FURNITURE SYSTEM FEELS TO BE SUPPLIED BY SYSTEMS FURNITURE MANUFACTURER AND ELECTRICAL CONNECTION OF SYSTEMS FURNITURE BY ELECTRICAL CONTRACTOR.
 - CONTRACTOR TO SUPPLY, INSTALL, CONNECT AND VERIFY SECURITY ACCESS CONTROL EQUIPMENT INCLUDING THE SUPPLY AND INSTALLATION OF BUSES, CONDUITS, WIRING AND CABLES AS PER SECURITY CONSULTANT'S SPECIFICATIONS AND DETAILS.
 - TYPICAL WALL OUTLETS TO BE MOUNTED AT 12" A.F.F.
 - REFER TO MECHANICAL & ELECTRICAL ENGINEER'S DRAWINGS FOR SPECIFICATIONS.
 - ALL POWER SHOWN ON THIS PLAN TO BE COORDINATED AND APPROVED BY CLIENT PRIOR TO INSTALLATION AND PARALLELIZATION OF ALL WORK WITH POWER REQUIREMENTS.
 - CONTRACTOR SHALL CONFIRM ALL QUANTITIES PRIOR TO ORDERING.
 - CONTRACTOR IS RESPONSIBLE FOR:
 - DISCONNECTING ALL LIGHTING, COMPUTERS, DATA LINES, PHONE LINES, ELECTRICAL FIXTURES, ETC.
 - REMOVAL AND RELOCATION OF EXISTING ELECTRICAL AS REQUIRED.
 - REMOVING ALL EXISTING TELLER WIRE SYSTEMS UNDER EXISTING FLOORCOVERING IF REQUIRED.
 - CLIENT IS RESPONSIBLE FOR ALL POS AND DEBIT WIRING.
 - THE ELECTRICAL CONTRACTOR MUST VISIT THE SITE AND DO TAKE OFF ON QUANTITY AND MATERIALS REQUIRED BEFORE STARTING PROJECT. ALL FUTURE CHANGES AND ELECTRICAL WORK UPS ARE TO BE CONFIRMED ON SITE AND DESIGNER NOTIFIED IF THERE ARE ANY DISCREPANCIES.

- Notes:**
- CONTRACTOR AND ALL SUB-TRADES SHALL VERIFY ALL SITE DIMENSIONS. ALL DRAWINGS, DETAILS AND SPECIFICATIONS AND REPORT ANY DISCREPANCIES TO THE INTERIOR DESIGNER IN WRITING FOR APPROVAL BEFORE PROCEEDING WITH THE WORK.
 - CONTRACTOR AND SUB-CONTRACTORS, BEFORE PROCEEDING WITH WORK, MUST SUBMIT ALL NECESSARY SAMPLES FOR APPROVAL OF QUALITY AND FINISH TO THE INTERIOR DESIGNER.
 - CONTRACTOR MUST COMPLY WITH THE CONTRACT DOCUMENTS, PERFORMANCE REQUIREMENTS, APPLICABLE CODES AND REGULATIONS.
 - ALL DRAWINGS AND WRITTEN MATERIAL HEREIN CONSTITUTE THE ORIGINAL AND UNPUBLISHED WORK OF "IBBY DESIGN ASSOCIATES INC." AND MAY NOT BE DUPLICATED, USED OR DISCLOSED WITHOUT PRIOR WRITTEN CONSENT OF "IBBY DESIGN ASSOCIATES INC."
 - DRAWINGS NOT TO BE SCALED
- Issue:**
- | | |
|-----------------------------|----------|
| 05 ISSUED FOR COORDINATION | 16.01.11 |
| 06 ISSUED FOR CLIENT REVIEW | 16.01.15 |
| 07 ISSUED FOR TENDER | 16.03.18 |
| 08 ISSUED FOR ADDENDUM | 16.09.20 |
| 09 ISSUED FOR ADDENDUM | 17.01.27 |
| 10 ISSUED FOR CONSTRUCTION | 17.06.19 |
| 14 SITE INSTRUCTION #04 | 18.03.07 |
| 16 SITE INSTRUCTION #06 | 18.05.04 |
| - | - |
| - | - |
| - | - |
| - | - |



1 POWER AND COMMUNICATION PLAN
1044 R04 1:50

Hines TRIDEL

AQUAVISTA
AT BAYSIDE TORONTO
1 EDgewater Drive, Toronto Ontario

IBBY DESIGN
77 MOWAT AVENUE, SUITE 100
TORONTO, ONTARIO M5K 3G3 - CANADA
T + 416 531 2224
12 DEBORCHES STREET
NEW YORK, NEW YORK 10013 - USA
T + 1 212 362 4852

Drawing Title:
**LEVEL P1
POWER AND
COMMUNICATION PLAN**

Our Project Number:
14008
Designed By:
DMJ/R, VVJ/SJ
Detailed By:
DMJ/R, VVJ/SJ, BP
Drawing Number:

ID4.4