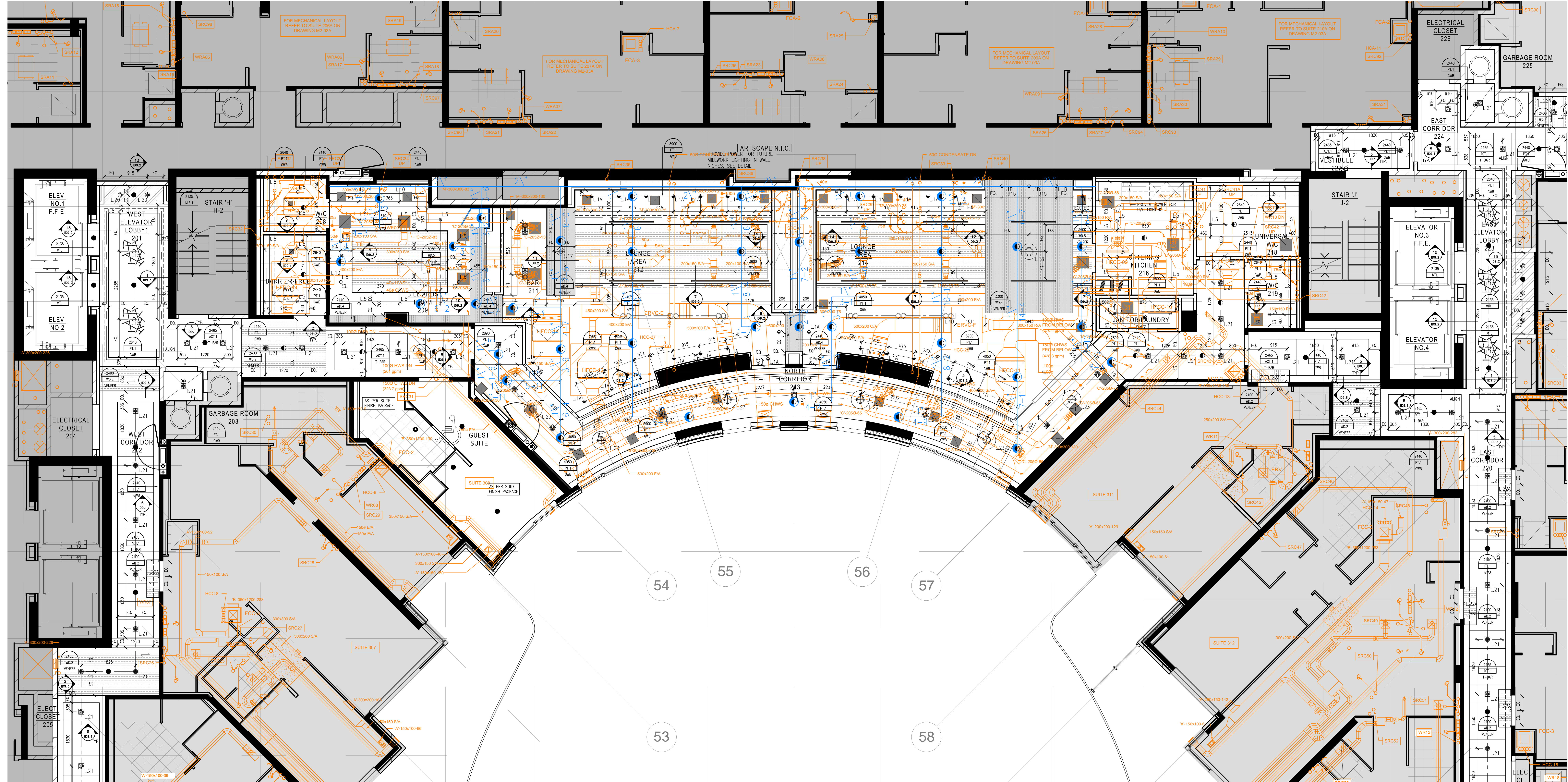


LEGEND : DRAWING SYMBOLS	
	DETAIL NUMBER REFER TO 11" X 11" DETAIL PNG
	CEILING HEIGHT REFER TO 11" X 11" PRODUCT SPECIFICATIONS
	LIGHTING CODE REFER TO 11" X 11" LIGHTING SPECIFICATIONS
	WOOD GRAIN DIRECTION
	UPRIGHT SPRINKLER CODE REFER TO CONSULTANT'S DRAWINGS FOR SPRINKLER SPECIFICATIONS & LOCATIONS
	PENDANT SPRINKLER CODE REFER TO CONSULTANT'S DRAWINGS FOR SPRINKLER SPECIFICATIONS & LOCATIONS
	SECTIONAL SPRINKLER CODE REFER TO CONSULTANT'S DRAWINGS FOR SPRINKLER SPECIFICATIONS & LOCATIONS
	LINEAR DIFFUSER CODE REFER TO MECHANICAL CONSULTANT'S DRAWINGS FOR SPECIFICATIONS & LOCATIONS
	RETURN AIR CODE REFER TO MECHANICAL CONSULTANT'S DRAWINGS FOR SPECIFICATIONS & LOCATIONS
	SUPPLY AIR CODE REFER TO MECHANICAL CONSULTANT'S DRAWINGS FOR SPECIFICATIONS & LOCATIONS
	EXHAUST AIR CODE REFER TO MECHANICAL CONSULTANT'S DRAWINGS FOR SPECIFICATIONS & LOCATIONS
	ACCESS PANEL CODE REFER TO MECHANICAL CONSULTANT'S DRAWINGS FOR SPECIFICATIONS & LOCATIONS

LEGEND : WALL SCONCE & PENDANT MOUNTING HEIGHTS	
FIXTURE	MOUNTING HEIGHT
L10	2050MM
L16	1950MM
L17	1950MM
L18	1950MM
L22A	2320MM
L28	1920MM
L23	2750MM

- REFLECTED CEILING NOTES**
- MECHANICAL AND ELECTRICAL WORK TO COMPLY WITH THE REQUIREMENTS OF THE BUILDING LANDLORD AND APPLICABLE JURISDICTION.
  - REFER TO DESIGNER DRAWINGS FOR LOCATION OF CEILING FIXTURES. REFER TO ENGINEERING DRAWINGS FOR SPECIFICATIONS.
  - CONTRACTOR TO CROSS REFERENCE BETWEEN DESIGNER'S ELECTRICAL DRAWINGS, ENGINEER'S MECHANICAL DRAWINGS AND SITE CONDITIONS. REPORT DISCREPANCIES TO THE DESIGNER FOR CLARIFICATION.
  - CONTRACTOR TO PROVIDE DIMENSIONS IN GENERAL CEILING TO ACCOMMODATE SPRINKLER, EXISTING ACCESS PANELS, RECESSED DOWN LIGHTS, AIR DIFFUSERS. CONTRACTOR TO REFER TO REFLECTED CEILING PLAN AND ENGINEERING DRAWINGS AND SPECIFICATIONS.
  - LIGHT FIXTURES AND SWITCHES TO BE LOCATED IN ACCORDANCE WITH DESIGNER DRAWINGS. REPORT DISCREPANCIES TO THE DESIGNER PRIOR TO INSTALLATION.
  - CONTRACTOR TO PROVIDE AIR TRUNKER DUCTS IN ACCORDANCE WITH MECHANICAL DRAWINGS WHILE CONTRACTOR OCCUPIES ABOVE SUSPENDED CEILING TO UPS OF SLAB.
  - REFER TO ENGINEERING DRAWINGS FOR LIFE SAFETY SYSTEMS.
  - ELECTRICAL CONSULTANT TO DETERMINE QUANTITY AND LOCATION OF LUMINAIRES REQUIRED TO ACHIEVE LIGHTING LEVELS AND DISTRIBUTION AS REQUIRED BY LOCAL GOVERNING CODES AND REGULATIONS.
  - ALL LIGHT FIXTURES TO BE ON DIMMERS.
  - CONTRACTOR TO CONFIRM CEILING HEIGHT & CONDITIONS AND NOTIFY DESIGNER OF ANY DISCREPANCIES.
  - CONTRACTOR & LIGHTING SUPPLIER TO VERIFY QUANTITY OF FIXTURES PRIOR TO ORDERING AND INSTALLING.

- Notes:**
- CONTRACTOR AND ALL SUB-TRADES SHALL VERIFY ALL SITE DIMENSIONS, ALL DRAWINGS, DETAILS AND SPECIFICATIONS AND REPORT ANY DISCREPANCIES TO THE INTERIOR DESIGNER IN WRITING FOR APPROVAL BEFORE PROCEEDING WITH THE WORK.
  - CONTRACTOR AND SUB-CONTRACTORS, BEFORE PROCEEDING WITH WORK, MUST SUBMIT ALL NECESSARY SAMPLES FOR APPROVAL OF QUALITY AND FINISH TO THE INTERIOR DESIGNER.
  - CONTRACTOR MUST COMPLY WITH THE CONTRACT DOCUMENTS, PERFORMANCE REQUIREMENTS, APPLICABLE CODES AND REGULATIONS.
  - ALL DRAWINGS AND WRITTEN MATERIAL HEREIN CONSTITUTE THE ORIGINAL AND UNPUBLISHED WORK OF "18 BY 18 DESIGN ASSOCIATES INC." AND MAY NOT BE DUPLICATED, USED OR DISCLOSED WITHOUT PRIOR WRITTEN CONSENT OF "18 BY 18 DESIGN ASSOCIATES INC."
  - DRAWINGS NOT TO BE SCALED
- Issue:**
- |                             |          |
|-----------------------------|----------|
| 01 ISSUED FOR COORDINATION  | 15.04.09 |
| 02 ISSUED FOR COORDINATION  | 15.04.13 |
| 04 ISSUED FOR COORDINATION  | 15.11.11 |
| 05 ISSUED FOR COORDINATION  | 16.01.11 |
| 06 ISSUED FOR CLIENT REVIEW | 16.01.15 |



REFLECTED CEILING PLAN  
SCALE 1:50

**Hines TRIDEL**

**AQUAVISTA**  
AT BAYSIDE TORONTO  
1 EDgewater Drive, Toronto Ontario

**18 BY 18 DESIGN**

77 MOWAT AVENUE, SUITE 100  
TORONTO, ONTARIO M5K 3C2 - CANADA  
T + 1 416 531 2224

12 DEBORAH STREET  
NEW YORK, NEW YORK 10013 - USA  
T + 1 212 392 4952

Drawing Title:  
**LEVEL 2  
REFLECTED CEILING  
PLAN**

Our Project Number:  
14008

Designed By:  
DMJ/R, VV/SJ

Checked By:  
DMJ/R, VV/SJ, BP

Drawing Number:  
**ID3.8A**