

LEGEND : DRAWING SYMBOLS	
	DETAIL NUMBER REFER TO 11" x 17" DETAIL PKG
	CEILING HEIGHT REFER TO 11" x 17" PRODUCT SPECIFICATIONS
	CEILING FINISH REFER TO 11" x 17" LIGHTING SPECIFICATIONS
	WOOD GRAIN DIRECTION
	UPRIGHT SPRINKLER REFER TO CONSULTANT'S DRAWINGS FOR SPRINKLER SPECIFICATIONS & LOCATIONS
	PENDANT SPRINKLER REFER TO CONSULTANT'S DRAWINGS FOR SPRINKLER SPECIFICATIONS & LOCATIONS
	SIDEWALL SPRINKLER REFER TO CONSULTANT'S DRAWINGS FOR SPRINKLER SPECIFICATIONS & LOCATIONS
	LINEAR DIFFUSER REFER TO MECHANICAL CONSULTANT'S DRAWINGS FOR SPECIFICATIONS & LOCATIONS
	RETURN AIR CODE REFER TO MECHANICAL CONSULTANT'S DRAWINGS FOR SPECIFICATIONS & LOCATIONS
	SUPPLY AIR CODE REFER TO MECHANICAL CONSULTANT'S DRAWINGS FOR SPECIFICATIONS & LOCATIONS
	EXHAUST AIR CODE REFER TO MECHANICAL CONSULTANT'S DRAWINGS FOR SPECIFICATIONS & LOCATIONS
	ACCESS PANEL REFER TO MECHANICAL CONSULTANT'S DRAWINGS FOR SPECIFICATIONS & LOCATIONS

LEGEND : WALL SCONCE & PENDANT MOUNTING HEIGHTS	
	2135MM
	2700MM

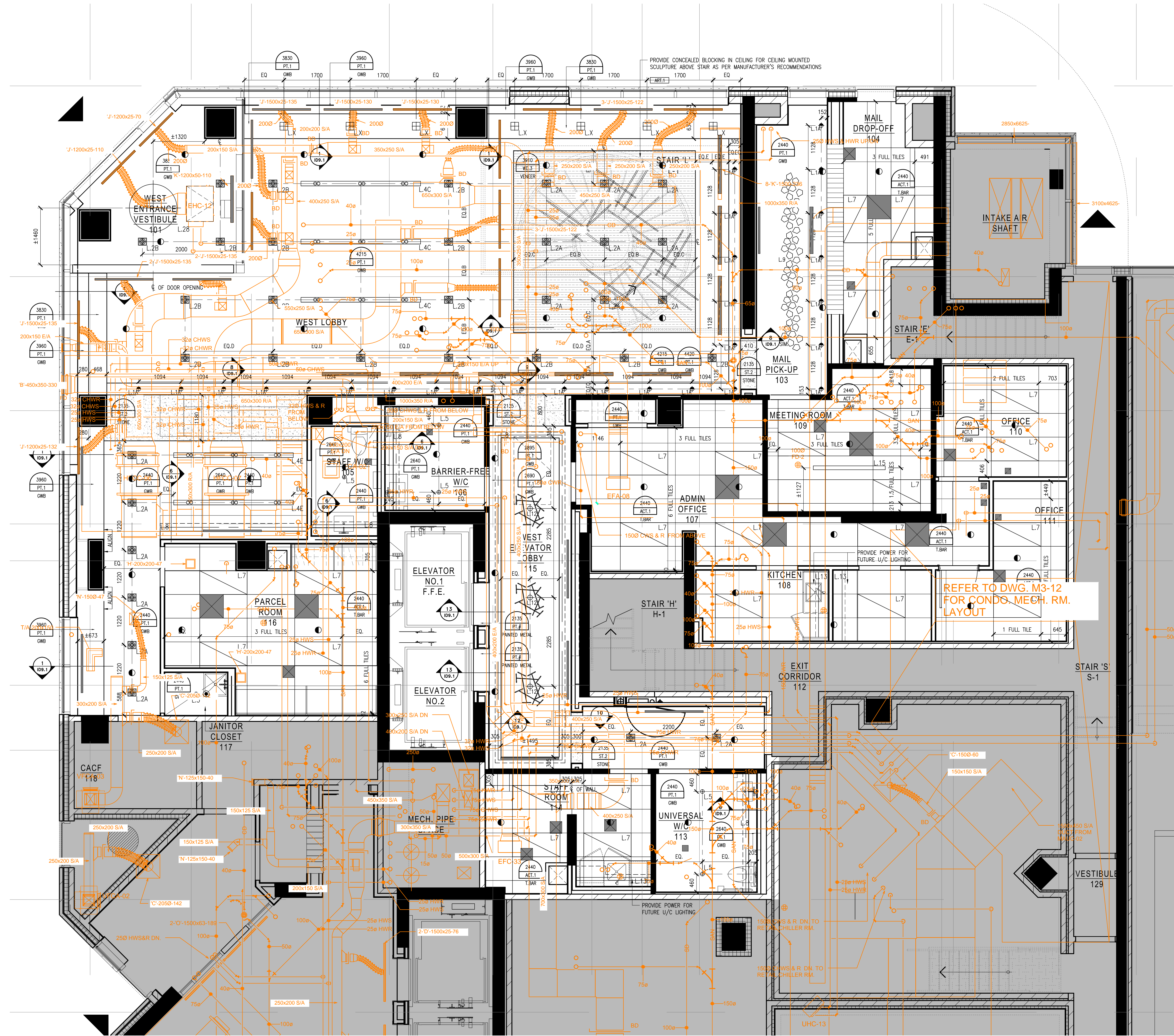
REFLECTED CEILING NOTES	
1.	MECHANICAL AND ELECTRICAL WORK TO COMPLY WITH THE REQUIREMENTS OF THE BUILDING LANDLORD AND AUTHORITIES HAVING JURISDICTION.
2.	REFER TO DESIGNER DRAWINGS FOR LOCATION OF CEILING FIXTURES. REFER TO ENGINEERING DRAWINGS FOR SPECIFICATIONS.
3.	CONTRACTOR TO CROSS REFERENCE BETWEEN DESIGNER'S ELECTRICAL DRAWINGS, ENGINEER'S MECHANICAL DRAWINGS AND SITE CONDITIONS. REPORT DISCREPANCIES TO THE DESIGNER FOR CLARIFICATION.
4.	CONTRACTOR TO PROVIDE GREENS IN ORPHAN CEILING TO ACCOMMODATE SPRINKLERS, EXIT LIGHTS, ACCESS PANELS, RECESSED DOWN LIGHTS, AIR DIFFUSERS. CONTRACTOR TO REFER TO REFLECTED CEILING PLAN AND ENGINEERING DRAWINGS AND SPECIFICATIONS.
5.	LIGHT FIXTURES AND SWITCHES TO BE LOCATED IN ACCORDANCE WITH DESIGNER DRAWINGS. REPORT DISCREPANCIES TO THE DESIGNER PRIOR TO INSTALLATION.
6.	CONTRACTOR TO PROVIDER AIR TRANSFER DUCTS IN ACCORDANCE WITH MECHANICAL DRAWINGS WHERE CONSTRUCTION OCCURS ABOVE SUSPENDED CEILING TO U/S OF SLAB.
7.	REFER TO ENGINEERING DRAWINGS FOR LIFE SAFETY SYSTEMS.
8.	ELECTRICAL CONSULTANT TO CONFIRM QUANTITY AND LOCATION OF LUMINAIRES REQUIRED TO ACHIEVE LIGHTING LEVELS AND DISTRIBUTION AS REQUIRED BY LOCAL GOVERNING CODES AND REGULATIONS.
9.	ALL LIGHT FIXTURE TO BE ON DIMMERS.
10.	CONTRACTOR TO CONFIRM CEILING HEIGHT & CONDITIONS AND NOTIFY DESIGNER OF ANY DISCREPANCIES.
11.	CONTRACTOR & LIGHTING SUPPLIER TO VERIFY QUANTITY OF FIXTURES PRIOR TO ORDERING AND INSTALLING.

Notes:

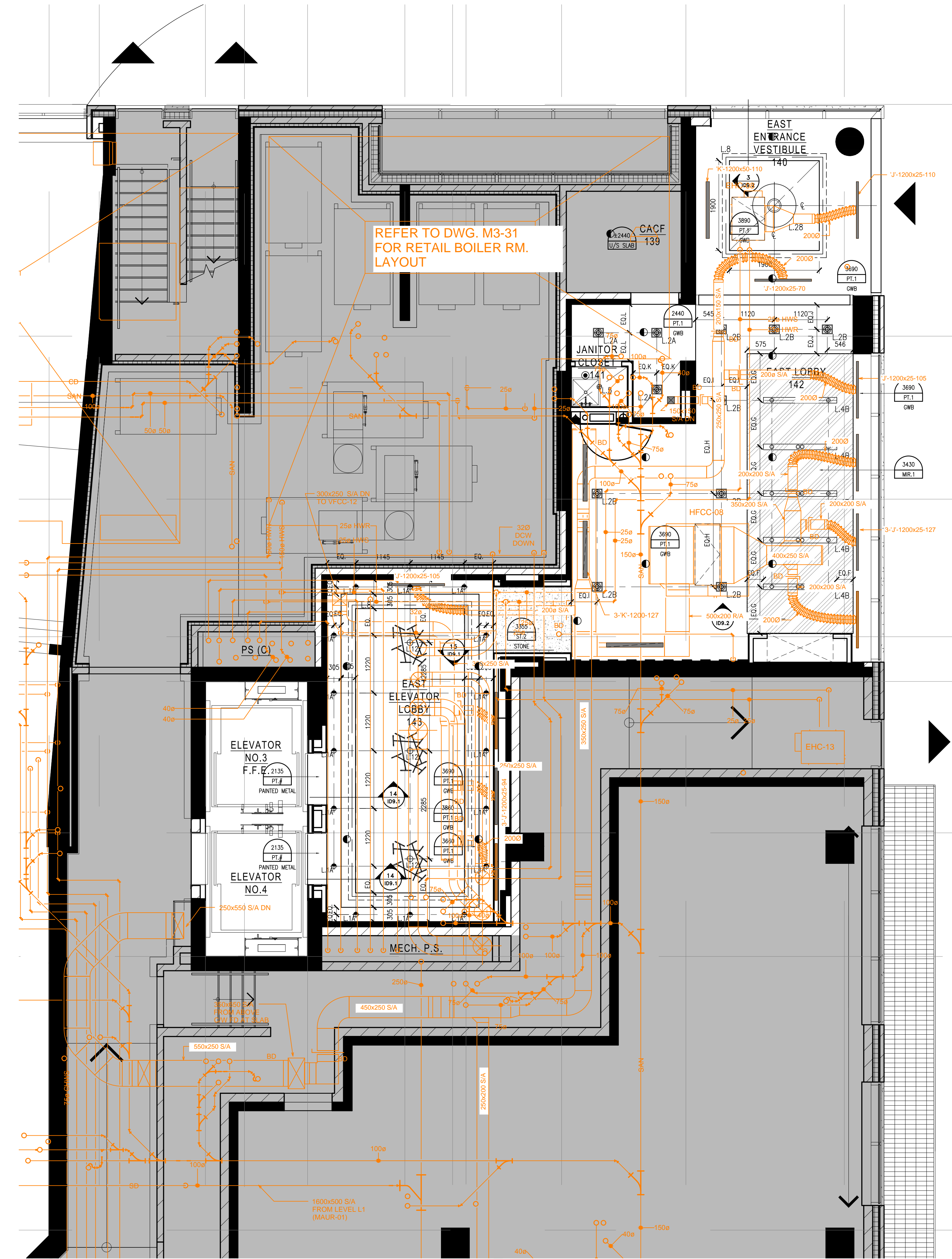
- CONTRACTOR AND ALL SUB-TRADES SHALL VERIFY ALL SITE DIMENSIONS. ALL DRAWINGS, DETAILS AND SPECIFICATIONS AND REPORT ANY DISCREPANCIES TO THE INTERIOR DESIGNER IN WRITING FOR APPROVAL BEFORE PROCEEDING WITH THE WORK.
- CONTRACTOR AND SUB-CONTRACTORS, BEFORE PROCEEDING WITH WORK, MUST SUBMIT ALL NECESSARY SAMPLES FOR APPROVAL OF QUALITY AND FINISH TO THE INTERIOR DESIGNER.
- CONTRACTOR MUST COMPLY WITH THE CONTRACT DOCUMENTS, PERFORMANCE REQUIREMENTS, APPLICABLE CODES AND REGULATIONS.
- ALL DRAWINGS AND WRITTEN MATERIAL HEREIN CONSTITUTE THE ORIGINAL AND UNPUBLISHED WORK OF "IBBY DESIGN ASSOCIATES INC." AND MAY NOT BE DUPLICATED, USED OR DISCLOSED WITHOUT PRIOR WRITTEN CONSENT OF "IBBY DESIGN ASSOCIATES INC."
- DRAWINGS NOT TO BE SCALED

Issue:

01 ISSUED FOR COORDINATION	15.04.09
02 ISSUED FOR COORDINATION	15.04.13
03 ISSUED FOR COORDINATION	15.11.11
04 ISSUED FOR COORDINATION	16.01.11
05 ISSUED FOR CLIENT REVIEW	16.01.15



1 REFLECTED CEILING PLAN
SCALE: 1:50



2 REFLECTED CEILING PLAN
SCALE: 1:50