



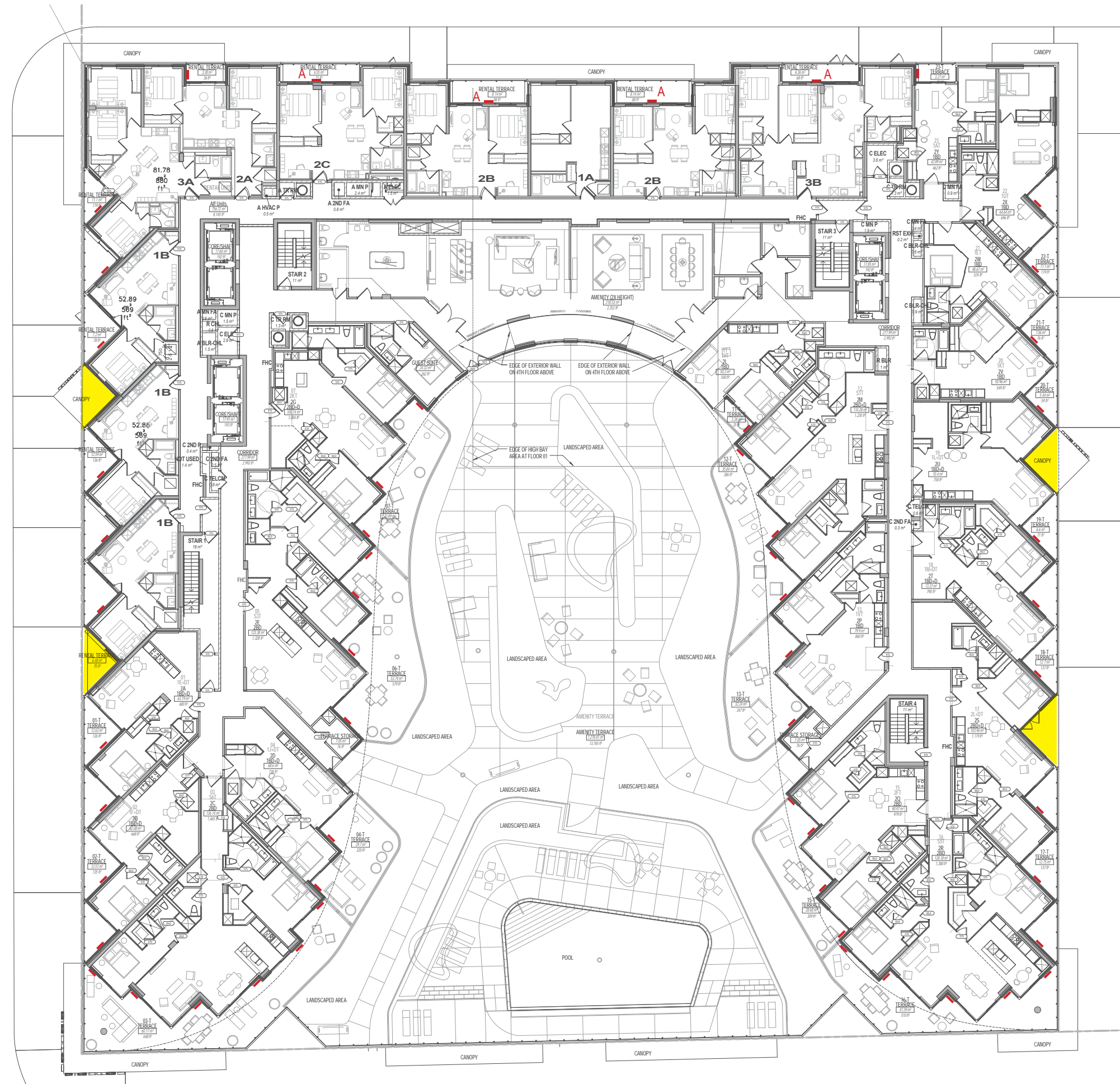
AQUAVISTA
AT BAYSIDE TORONTO

LIGHTING PACKAGE
JANUARY 20, 2015

EDGEWATER DRIVE



- █ RECTANGULAR RECESSED WALL LUMINAIRE - DIRECTED LIGHT
- - - LED CIRCUIT BOARD LIGHT BEHIND ONE WAY GLASS



- █ RECTANGULAR RECESSED WALL LUMINAIRE - DIRECTED LIGHT
- A WILL REQUIRE CHANGING LOWER LITE TO METAL PANEL
- ▶ NO LIGHT REQUIRED WHERE NO BALCONY/TERRACE EXIST. NOTE THIS "NOTCH" CHANGES LOCATION FROM FLOOR TO FLOOR
- SEE LANDSCAPE DRAWINGS FOR PUBLIC TERRACE LIGHTING PLAN

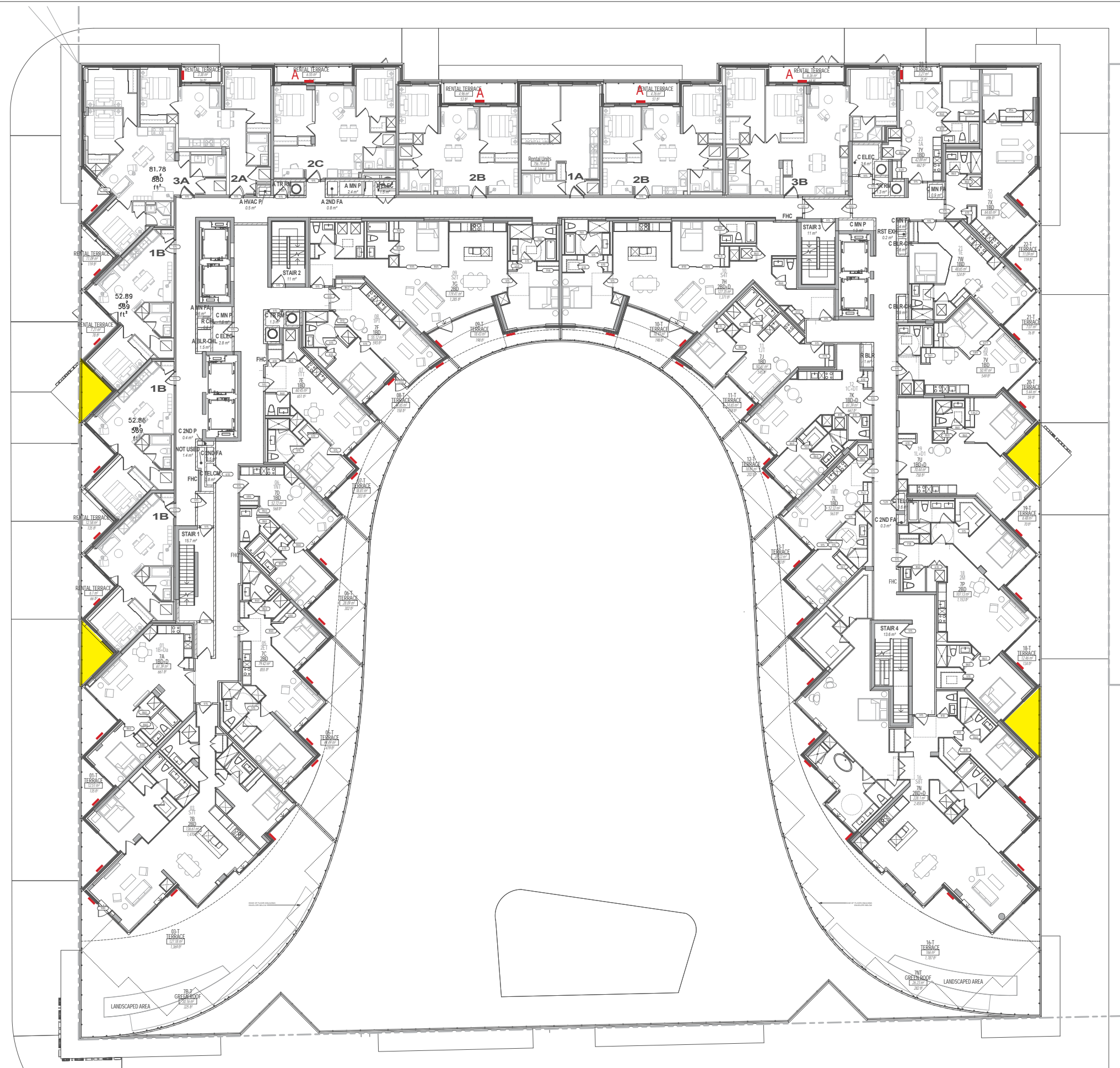
RECTANGULAR RECESSED WALL LUMINAIRE - DIRECTED LIGHT

A WILL REQUIRE CHANGING LOWER LITE TO METAL PANEL

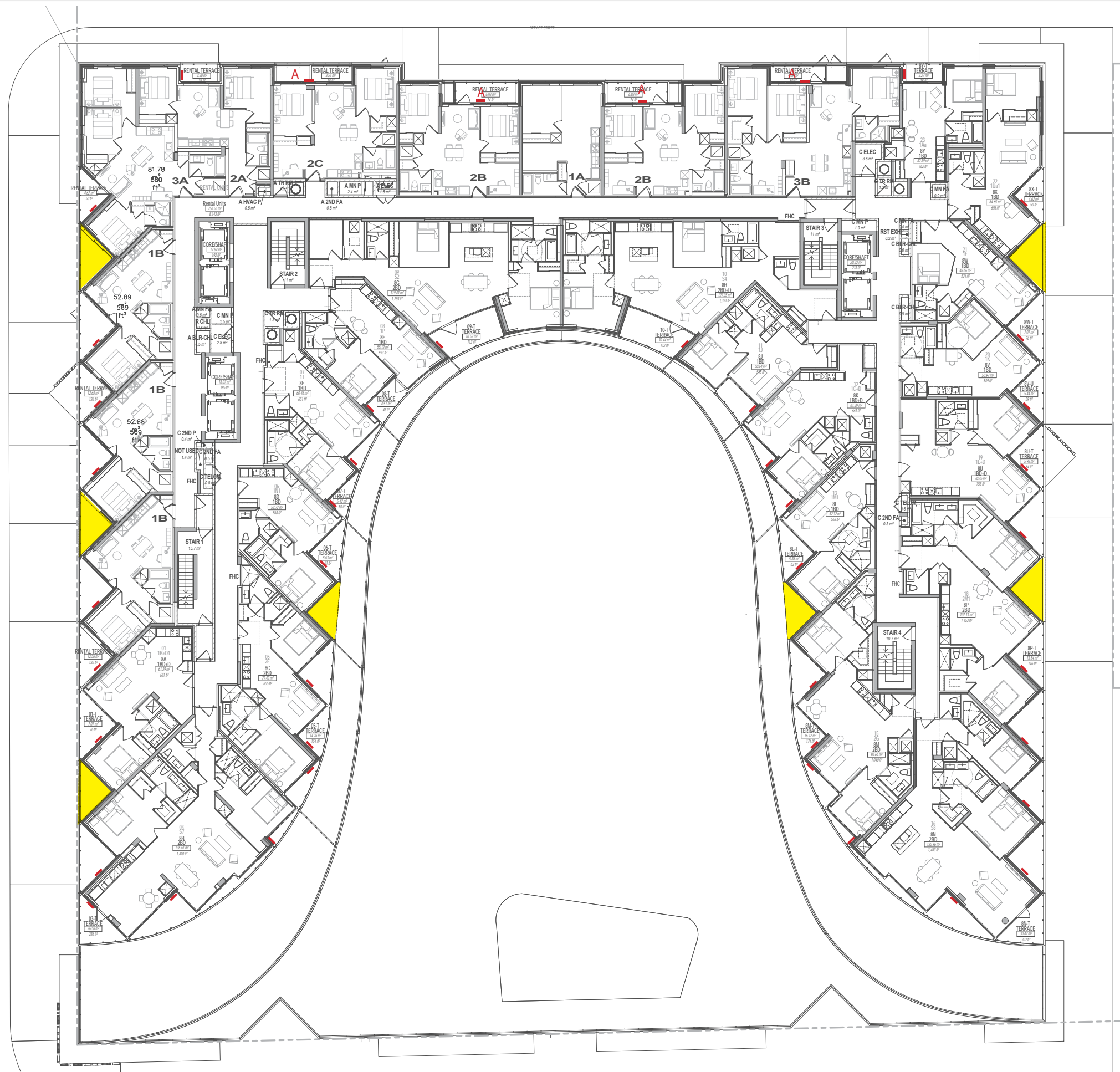
NO LIGHT REQUIRED WHERE NO BALCONY/TERRACE EXIST. NOTE THIS "NOTCH" CHANGES LOCATION FROM FLOOR TO FLOOR

SEE LANDSCAPE DRAWINGS FOR PUBLIC TERRACE LIGHTING PLAN





- █ RECTANGULAR RECESSED WALL LUMINAIRE - DIRECTED LIGHT
- A WILL REQUIRE CHANGING LOWER LITE TO METAL PANEL
- ▶ NO LIGHT REQUIRED WHERE NO BALCONY/TERRACE EXIST. NOTE THIS "NOTCH" CHANGES LOCATION FROM FLOOR TO FLOOR
- SEE LANDSCAPE DRAWINGS FOR PUBLIC TERRACE LIGHTING PLAN



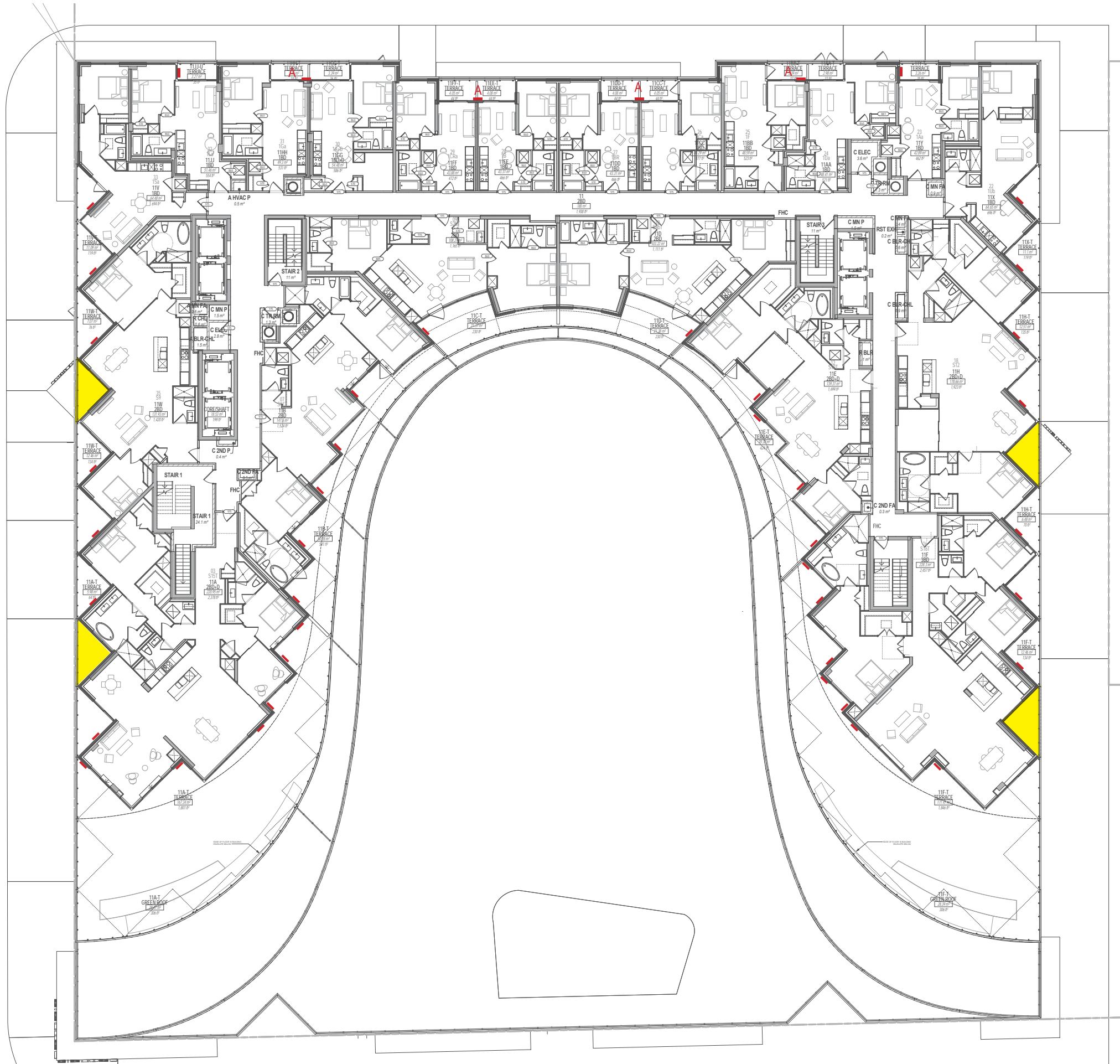
- █ RECTANGULAR RECESSED WALL LUMINAIRE - DIRECTED LIGHT
- A WILL REQUIRE CHANGING LOWER LITE TO METAL PANEL
- ▶ NO LIGHT REQUIRED WHERE NO BALCONY/TERRACE EXIST. NOTE THIS "NOTCH" CHANGES LOCATION FROM FLOOR TO FLOOR
- SEE LANDSCAPE DRAWINGS FOR PUBLIC TERRACE LIGHTING PLAN

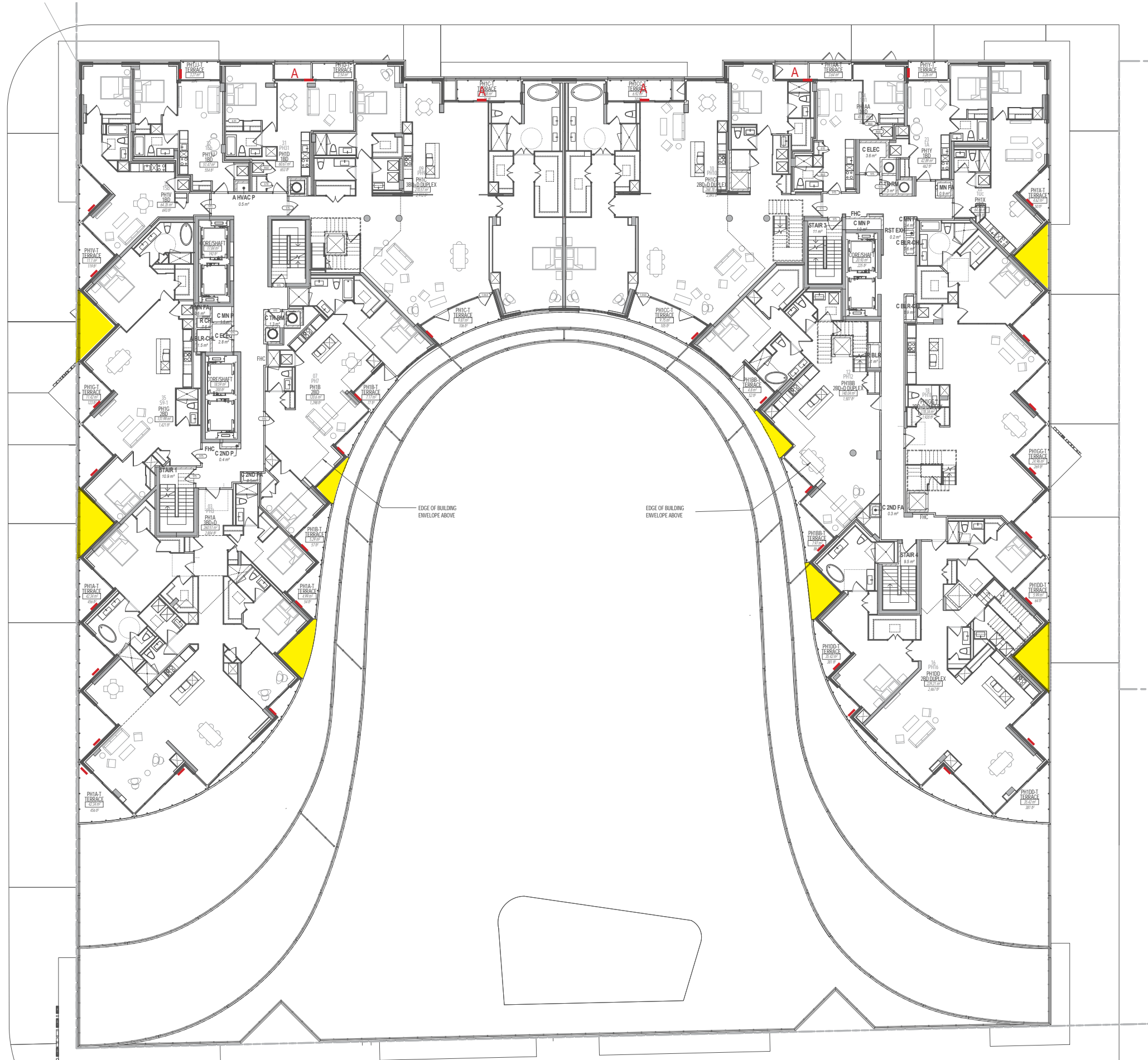
RECTANGULAR RECESSED WALL LUMINAIRE - DIRECTED LIGHT

A WILL REQUIRE CHANGING LOWER LITE TO METAL PANEL

NO LIGHT REQUIRED WHERE NO BALCONY/TERRACE EXIST. NOTE THIS "NOTCH" CHANGES LOCATION FROM FLOOR TO FLOOR

SEE LANDSCAPE DRAWINGS FOR PUBLIC TERRACE LIGHTING PLAN





- █ RECTANGULAR RECESSED WALL LUMINAIRE - DIRECTED LIGHT
- A WILL REQUIRE CHANGING LOWER LITE TO METAL PANEL
- ▶ NO LIGHT REQUIRED WHERE NO BALCONY/TERRACE EXIST. NOTE THIS "NOTCH" CHANGES LOCATION FROM FLOOR TO FLOOR
- SEE LANDSCAPE DRAWINGS FOR PUBLIC TERRACE LIGHTING PLAN



- █ RECTANGULAR RECESSED WALL LUMINAIRE - DIRECTED LIGHT
- A WILL REQUIRE CHANGING LOWER LITE TO METAL PANEL
- ▶ NO LIGHT REQUIRED WHERE NO BALCONY/TERRACE EXIST. NOTE THIS "NOTCH" CHANGES LOCATION FROM FLOOR TO FLOOR
- SEE LANDSCAPE DRAWINGS FOR PUBLIC TERRACE LIGHTING PLAN

Recessed wall luminaires with directed light

Housing: Constructed of die-cast and aluminum with integral wiring compartment. Mounting tabs provided. Die castings are marine grade, copper free (≤ 0.3% copper content) A360.0 aluminum alloy.

Enclosure: One piece die-cast aluminum faceplate. Clear tempered glass; .125" thick, machined flush to faceplate surface. Faceplate is secured by two (2) flush, socket head, stainless steel captive screws threaded into stainless steel inserts in the housing casting. Continuous high temperature, molded silicone rubber gasket for weather tight operation.

Electrical: 11.2W LED luminaire, 14.5 total system watts, -30°C start temperature. Integral 120V-277 V electronic LED driver, 0 -10V dimming. The LED and driver are mounted on a removable plate for easy replacement. Standard LED color temperature is 3000K (available in 4000K; add suffix K4).

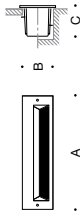
Note: Due to the dynamic nature of LED technology, LED luminaire data on this sheet is subject to change at the discretion of BEGA-US. For the most current technical data, please refer to www.bega-us.com.

Finish: All BEGA standard finishes are polyester powder coat with minimum 3 mil thickness. Available in four standard BEGA colors: Black (BLK); White (WHT); Bronze (BRZ); Silver (SLV). To specify, add appropriate suffix to catalog number. Custom colors supplied on special order.

UL listed for US and Canadian Standards, suitable for wet locations and for installation within 3 feet of ground. IC rated. Protection class: IP65.

Luminaire Lumens: 342
Tested in accordance with LM-79-08

Type:
BEGA Product:
Project:
Voltage:
Color:
Options:
Modified:



Lamp	A	B	C
2384 LED ADA	11.2W LED	12 1/2	2 3/4 2 1/2

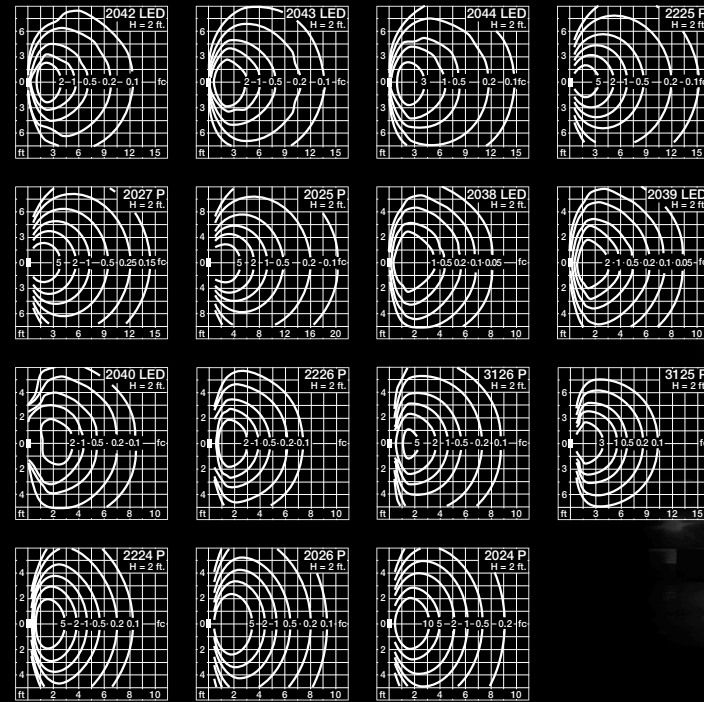


BEGA - US 1000 BEGA Way, Carpinteria, CA 93013 (805)684-0533 FAX (805)566-9474 www.bega-us.com
©copyright BEGA-US 2014 Updated 05/14

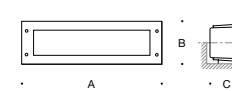
Recessed wall luminaires
Unshielded, shielded or directed light distribution

The small scale of these luminaires makes them especially suitable for installation in walls for both interior and exterior applications. Designed for low mounting heights for the illumination of steps, stairs, ramps, aisles, and other interior and exterior locations where guidance and security lighting are required. The different sizes and their light outputs can solve a host of lighting tasks. The unshielded luminaires are equipped with translucent white safety glass that is machined flush to the faceplate surface. These luminaires can also be installed in a vertical orientation.

BEGA can supply you with suitable LED replacement modules for up to 20 years after the purchase of LED luminaires – see page 407. Further LED technical data, e.g. luminous flux, CRI and dimming are provided on the individual luminaire specification sheets, available at www.bega-us.com.



Recessed luminaires · **Unshielded, shielded** or **directed** light with LEDs or for fluorescent lamps
Die cast aluminum · White or matte safety glass
2224 P · 2026 P · 2024 P Reflector of pure anodized aluminum
LEDs with integral electronic driver
Color temperature 3000 K (for 4000K add suffix K4)
Fluorescent with electronic ballast
Finish: Black (BLK) White (WHT)
Silver (SLV) Bronze (BRZ)
UL or CSA listed, suitable for wet locations (see page 409).
Protection class IP65



Recessed luminaires · unshielded					
	Lamp		A	B	C
2042 LED	ADA 10.1 W LED		13	4 7/8	4
2043 LED	ADA 13.4 W LED		16 1/2	4 7/8	4
2044 LED	ADA 16.8 W LED		20 1/2	4 7/8	4
2225 P	ADA 1 18 W CF twin-4p*		13	4 7/8	4
2027 P	ADA 1 27 W CF twin-2p		16 1/2	4 7/8	4
2025 P	ADA 1 39 W CF twin-2p		20 1/2	4 7/8	4

Recessed luminaires · shielded					
	Lamp		A	B	C
2038 LED	ADA 10.1 W LED		13	4 7/8	4
2039 LED	ADA 13.4 W LED		16 1/2	4 7/8	4
2040 LED	ADA 16.8 W LED		20 1/2	4 7/8	4
2226 P	ADA 1 18 W CF twin-4p*		13	4 7/8	4
3126 P	ADA 1 27 W CF twin-2p		16 1/2	4 7/8	4
3125 P	ADA 1 39 W CF twin-2p		20 1/2	4 7/8	4

Recessed luminaires · directed					
	Lamp		A	B	C
2224 P	ADA 1 18 W CF twin-4p*		13	4 7/8	4
2026 P	ADA 1 27 W CF twin-4p		16 1/2	4 7/8	4
2024 P	ADA 1 39 W CF twin-4p		20 1/2	4 7/8	4



*Use only 9.0" MOL lamps



TYPICAL PRIVATE TERRACE AND
BALCONY LIGHT FIXTURE PLACEMENT

RETAIL SIGNAGE

TYPICAL GROUND FLOOR LIGHT
FIXTURE PLACEMENT