

**SPRINKLER LEGEND**

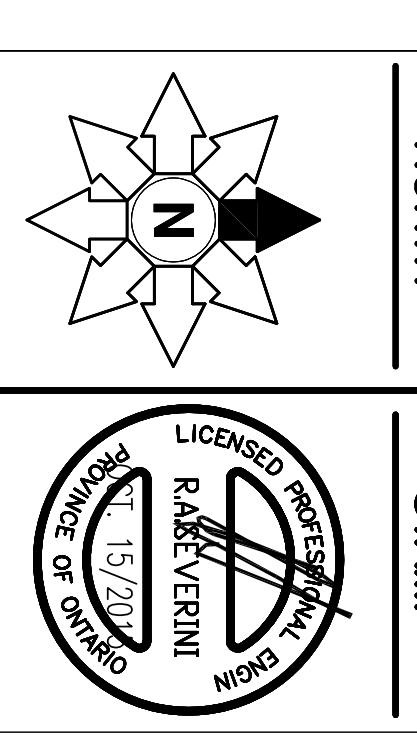
1/2" 165°F SC OR CONCEALED ROBOTIC SPRINKLER NO. 518 SH	00
1/2" 165°F SC SR BRASS OH UPRIGHT SPRINKLER NO. 519 OH	00
FIRE HOSE CABINET	SEE DETAIL SHEET SP1

**TRIDEL**  
BUILT FOR LIFE

4800 Dufferin St.  
Toronto, Ontario M3H 5S9  
(416) 415-8133

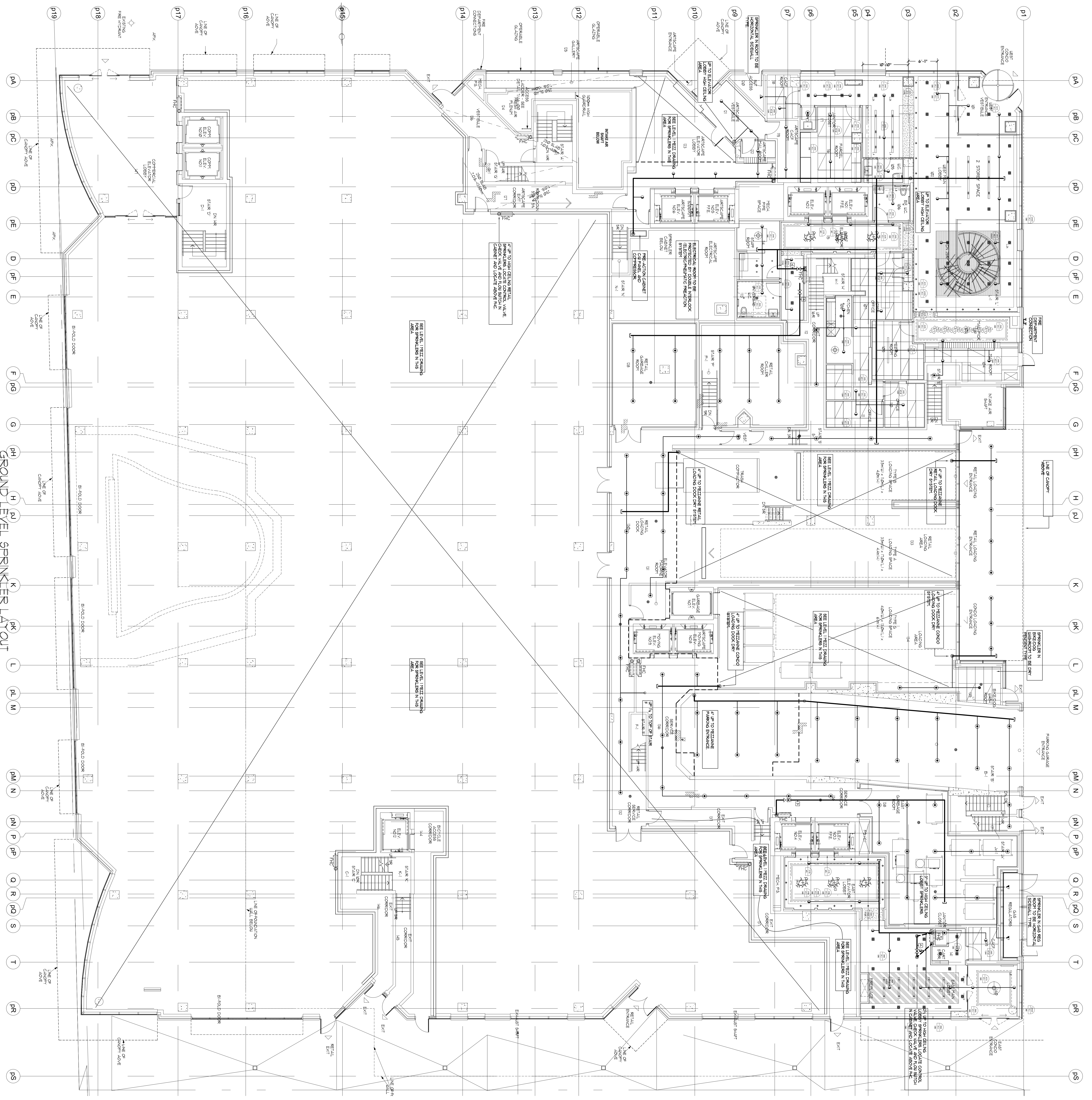
**MIRENDA**  
INCORPORATED

15171 Yonge Street Suite 202  
Aurora, Ontario L4G 1M1  
(416) 305-77-0092  
(416) 305-72-5517



PROJECT: AQUAVISTA  
MERCHANTS WAREHOUSE  
TORONTO, ONTARIO

DATE: 10/13/2015  
SCALE: 1/8"=1'-0"  
DWG NO.: 15-678  
PROJECT NO.:  
REVISION NO.: SP6  
OF SP20



GROUND LEVEL SPRINKLER LAYOUT  
SCALE: 1/8"=1'-0"