

REVISIONS		
1.0	ISSUED FOR TENDER	10/15/15

**NOTES**

**SPRINKLER SYSTEM DESIGN CRITERIA:**  
**PARKING GARAGE:**  
 AS PER NFPA 13 ORD. HAZARD GR. 1 0.15/1500 SQ. FT. (1500X1.3 FOR DRY SYSTEM) PLUS 250 GPM HI AND OH  
**RETAIL SPACE:**  
 AS PER NFPA 13 ORD. HAZARD GR. 2 0.2/1500 SQ. FT. PLUS 250 GPM HI AND OH  
**RESIDENTIAL UNITS:**  
 SHALL BE THE GREATER OF THE FOLLOWING:  
 1. IN ACCORDANCE WITH MINIMUM FLOW RATES INDICATED IN INDIVIDUAL LISTINGS  
 2. CALCULATED BASED ON DELIVERING A MINIMUM OF 0.1 GPM/FT<sup>2</sup> OVER THE DESIGN AREA IN ACCORDANCE WITH THE PROVISIONS OF 8.5.2.1 OR 8.5.2.1.2  
 PLUS 100 GPM FOR HI & OH  
**MECHANICAL PENHOUSE:**  
 AS PER NFPA 13 ORD. HAZARD GR. 2 0.2/1500 SQ. FT. PLUS 250 GPM HI & OH  
**STANDPIPE SYSTEM DESIGN CRITERIA**  
 50 GPM FOR THE MOST REMOTE 1 1/2" OUTLET PLUS 90 GPM FOR ONE ADDITIONAL OUTLET AT A PRESSURE OF 65 PSI, FED THROUGH FIRE DEPARTMENT CONNECTION  
 250 GPM FOR THE MOST REMOTE 2 1/2" OUTLET PLUS 250 GPM FOR ONE ADDITIONAL OUTLET AT A PRESSURE OF 65 PSI, FED THROUGH FIRE DEPARTMENT CONNECTION  
**SPRINKLER PIPING NOTES:**  
 1. SPRINKLER MAIN PIPING IN CORRIDORS ON RESIDENTIAL LEVELS TO BE SCHEDULE 10 BLACK STEEL TYPE PIPE  
 2. SPRINKLER BRANCHLINE PIPING IN RESIDENTIAL UNITS IS TO BE BLAZEMASTER OR BLACK STEEL SCHEDULE 10/40 TYPE PIPE

**SPRINKLER LEGEND**

	TYCO SERIES EC-14 3/4" 155F EC SR BRASS UPRIGHT SPRINKLER K=14.0 OH 1 MAX. COV. 20'X20' MAX. 12' DEFLECTOR	113
	TYCO SERIES EC-14 3/4" 155F EC SR BRASS UPRIGHT SPRINKLER K=14.0 OH 1 MAX. COV. 20'X20' MAX. 12' DEF. ON 1.25" OUTLETS	107
	1/2" 165F SC SR BRASS UPRIGHT SPRINKLER K=5.6 OH	7
	1/2" 212F SC SR BRASS SIDEWALL SPRINKLER K=5.6 OH	2
	1/2" 165F SC OR CONCEALED PENDENT SPRINKLER C/W WHITE COVERPLATE K=5.6 LH	7
	1/2" 280F SC OR CHROME PENDENT SPRINKLER K=5.6 LH	2
	VIKING MODEL VK468 FREEDOM RESIDENTIAL SEMI-RECESSED CHR. PENDENT SPRINKLER C/W CHROME ESCUTCHEON PLATE 1/2" K=4.9 155F	
	VIKING MODEL VK460 FREEDOM RESIDENTIAL HORIZONTAL CHROME SIDEWALL SPRINKLER C/W CHROME ESCUTCHEON PLATE 1/2" K=5.8 155F 8" DEFLECTOR U.N.O.	
	FIRE HOSE CABINET SEE DETAIL SHEET SP1	6

**TRIDEL**  
 BUILT FOR LIFE  
 4800 Dufferin St  
 Toronto, Ontario M3H 5S9  
 (tel): 416-661-9290

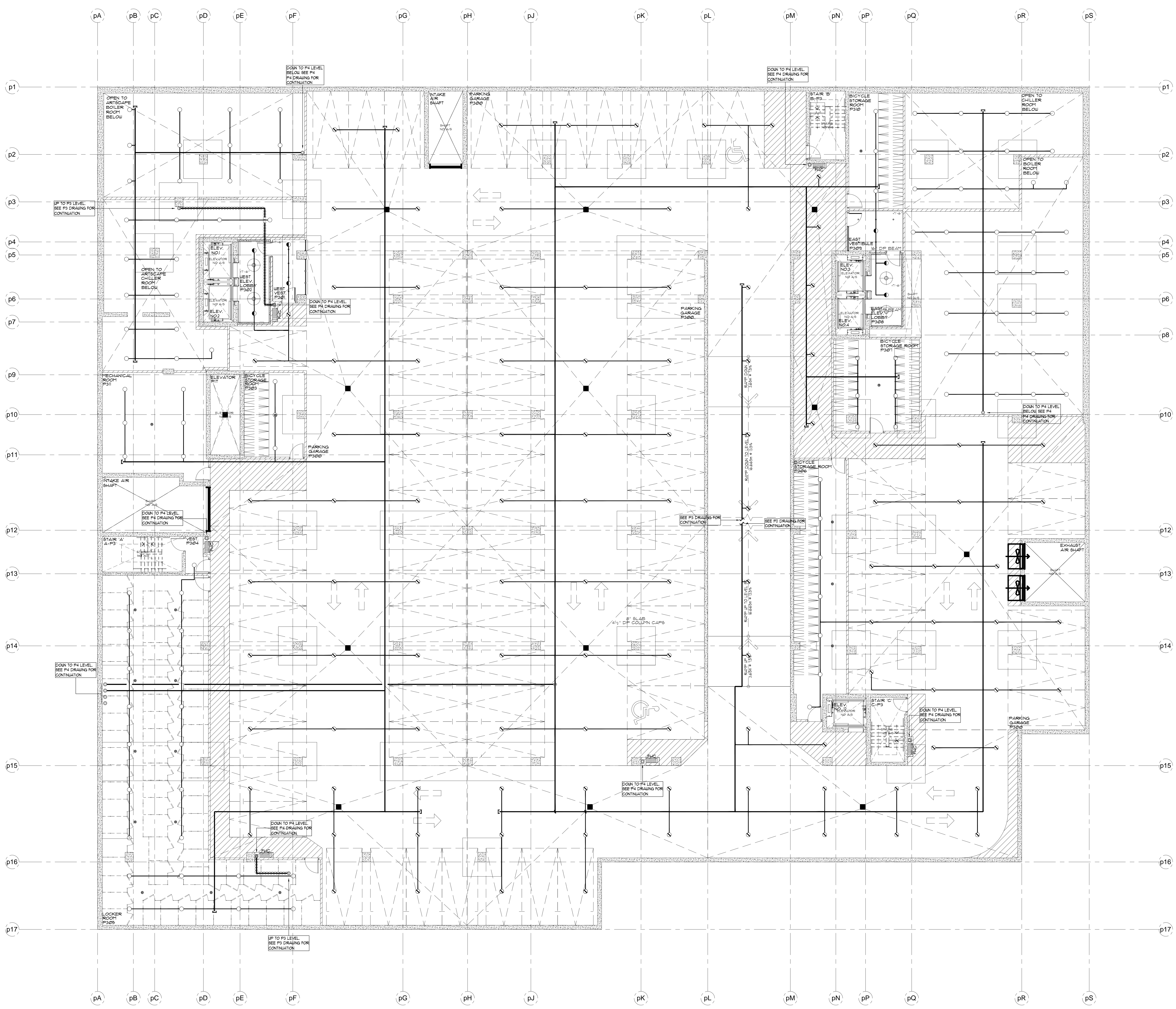
**MIRENDA**  
 INTERNATIONAL INC. LTD.  
 15171 Yonge Street Suite 202  
 Aurora Ontario L4G 1M1  
 (tel): 905-727-0092  
 (fax): 905-727-5517

**NORTH** **STAMP**

**PROJECT** AQUAVISTA  
 AT BAYSIDE TORONTO  
 MERCHANT'S WHARF  
 TORONTO, ONTARIO

**DWG TITLE**

<b>DATE</b>	10/15/2015	<b>PROJECT NO.</b>	15-678
<b>SCALE</b>	1/8"=1'-0"	<b>DWG NO.</b>	SP4
<b>DWN BY</b>	M.B.	<b>ISSUED FOR REVISION NO.</b>	1.0
		<b>OF SP20</b>	



**SPRINKLER NOTES:**

- SPRINKLER DEFLECTORS TO BE LOCATED MINIMUM 1' BELOW LIGHTS AND CAPITALS. MAXIMUM 12" BELOW CONCRETE DECK
- ALL LIQUID SPRINKLER PIPING LOCATED IN UNHEATED AREAS TO BE HEAT TRACED (BY OTHERS)
- ALL EXTENDED COVERAGE SPRINKLERS LOCATED ON P1 LEVEL TO BE INSTALLED ON 1/4" OUTLETS
- ALL STANDARD COVERAGE SPRINKLERS LOCATED ON P1 LEVEL TO BE INSTALLED ON 1" OUTLETS
- SPRINKLER CONTRACTOR TO PROVIDE AUXILIARY DRAINS FOR ALL TRAPPED PIPING
- ALL FIRE HOSE CABINETS ARE AS PER THE LOCATIONS SHOWN ON THE ARCHITECTURAL DRAWINGS