

REVISIONS		
1.0	ISSUED FOR TENDER	10/15/15

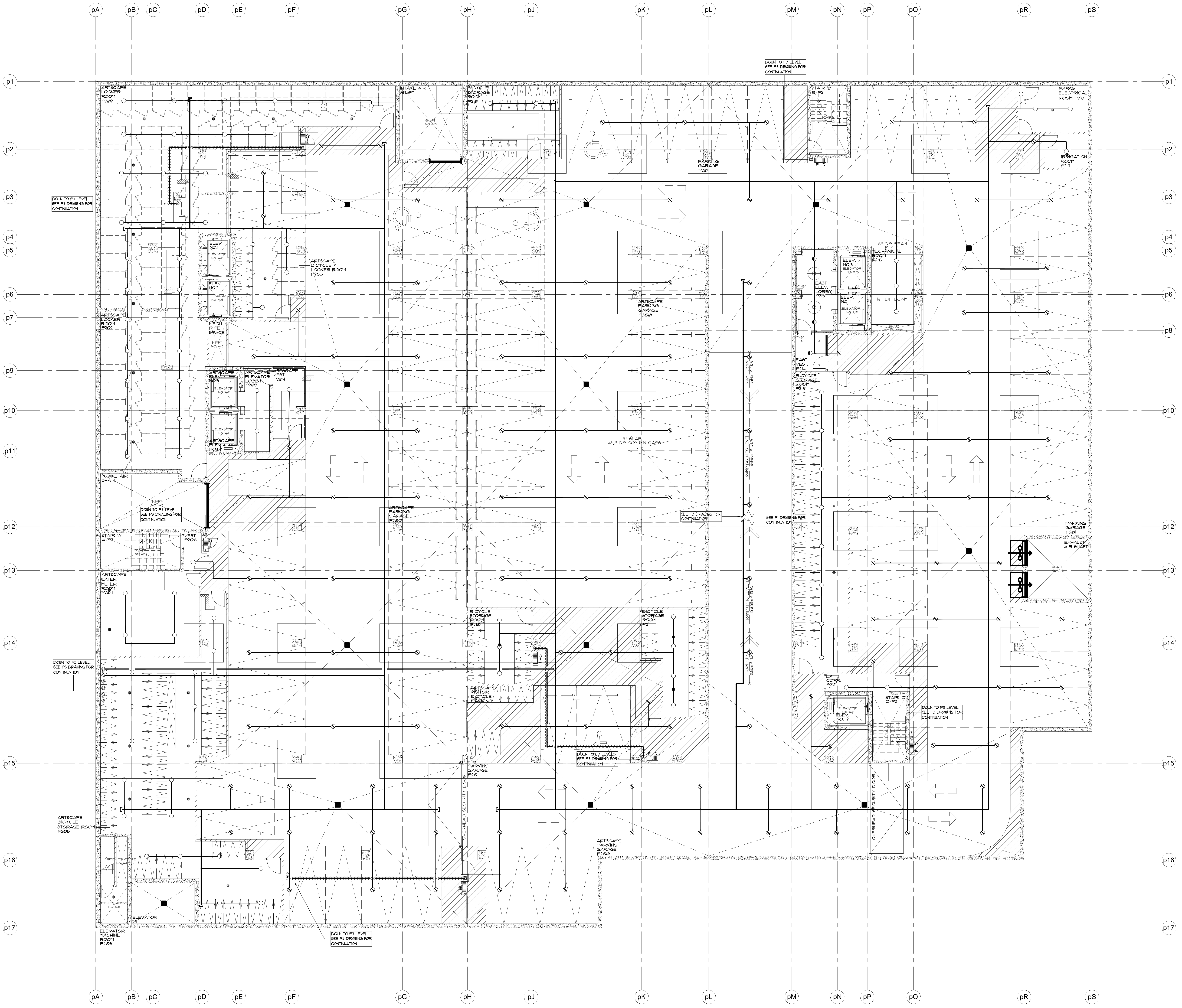
NOTES

SPRINKLER SYSTEM DESIGN CRITERIA:
PARKING GARAGE:
 AS PER NFPA 13 ORD. HAZARD GR. 1 0.15/1950
 SQ. FT. 1500X1.3 FOR DRY SYSTEM
 PLUS 250 GPM IH AND OH
RETAIL SPACE:
 AS PER NFPA 13 ORD. HAZARD GR. 2 0.2/1500
 SQ. FT. PLUS 250 GPM IH AND OH
RESIDENTIAL UNITS:
 SHALL BE THE GREATER OF THE FOLLOWING:
 1. IN ACCORDANCE WITH MINIMUM FLOW RATES
 INDICATED IN INDIVIDUAL LISTINGS
 2. CALCULATED BASED ON DELIVERING A MINIMUM
 OF 0.1 GPM/FT² OVER THE DESIGN AREA IN
 ACCORDANCE WITH THE PROVISIONS OF 8.5.2.1
 OR 8.5.2.2
 PLUS 100 GPM FOR IH & OH
MECHANICAL PENTHOUSE:
 AS PER NFPA 13 ORD. HAZARD GR. 2 0.2/1500
 SQ. FT. PLUS 250 GPM IH & OH
STANDPIPE SYSTEM DESIGN CRITERIA
 50 GPM FOR THE MOST REMOTE 1 1/2" OUTLET
 PLUS 50 GPM FOR ONE ADDITIONAL OUTLET AT A
 PRESSURE OF 65 PSI FED THROUGH FIRE
 DEPARTMENT CONNECTION
 250 GPM FOR THE MOST REMOTE 2 1/2" OUTLET
 PLUS 250 GPM FOR ONE ADDITIONAL OUTLET AT
 A PRESSURE OF 65 PSI FED THROUGH FIRE
 DEPARTMENT CONNECTION

SPRINKLER PIPING NOTES:
 1. SPRINKLER MAIN PIPING IN CORRIDORS ON
 RESIDENTIAL LEVELS IS TO BE SCHEDULE 10
 BLACK STEEL TYPE PIPE
 2. SPRINKLER BRANCHLINE PIPING IN RESIDENTIAL
 UNITS IS TO BE BLAZEMASTER OR BLACK
 STEEL SCHEDULE 10/40 TYPE PIPE

SPRINKLER LEGEND	
	TYCO SERIES EC-14 3/4" 155°F EC SR BRASS UPRIGHT SPRINKLER K=14.0 OH 1 MAX. COV. 20'X20' MAX. 12" DEFLECTOR
	TYCO SERIES EC-14 3/4" 155°F EC SR BRASS UPRIGHT SPRINKLER K=14.0 OH 1 MAX. COV. 20'X20' MAX. 12" DEF. ON 1.25" OUTLETS
	1/2" 165°F SC SR BRASS UPRIGHT SPRINKLER K=5.6 OH
	1/2" 165°F SC SR BRASS SIDEWALL SPRINKLER K=5.6 OH
	1/2" 165°F SC OR CONCEALED PENDENT SPRINKLER C/W WHITE COVERPLATE K=5.6 LH
	1/2" 280°F SC OR CHROME PENDENT SPRINKLER K=5.6 LH
	YKING MODEL VK460 FREEDOM RESIDENTIAL SEMI-RECESSED CHR. PENDENT SPRINKLER C/W CHROME ESCUTCHEON PLATE 1/2" K=5.8 155°F
	YKING MODEL VK460 FREEDOM RESIDENTIAL HORIZONTAL CHROME SIDEWALL SPRINKLER C/W CHROME ESCUTCHEON PLATE 1/2" K=5.8 155°F 6" DEFLECTOR U.S.D.
	FIRE HOSE CABINET SEE DETAIL SHEET SP1

SPRINKLER NOTES:
 1. SPRINKLER DEFLECTORS TO BE LOCATED MINIMUM 1" BELOW LIGHTS AND CAPITALS MAXIMUM 1" BELOW CONCRETE DECK
 2. ALL WET SPRINKLER PIPING LOCATED IN UNHEATED AREAS TO BE HEAT TRACED. (BY OTHERS)
 3. ALL EXTENDED COVERAGE SPRINKLERS LOCATED ON P1 LEVEL TO BE INSTALLED ON 1 1/4" OUTLETS
 4. ALL STANDARD COVERAGE SPRINKLERS LOCATED ON P1 LEVEL TO BE INSTALLED ON 1" OUTLETS
 5. SPRINKLER CONTRACTOR TO PROVIDE AUXILIARY DRAINS FOR ALL TRAPPED PIPING
 6. ALL FIRE HOSE CABINETS ARE AS PER THE LOCATIONS SHOWN ON THE ARCHITECTURAL DRAWINGS



P2 PARKING LEVEL (-26'-11") - SPRINKLERS
 SCALE 1/8" = 1'-0"

TRIDEL
 BUILT FOR LIFE
 4800 Dufferin St
 Toronto, Ontario M3H 5S9
 (tel): 416-861-9290

MIRENDA
 INTERNATIONAL INC. LTD.
 15171 Yonge Street Suite 202
 Aurora Ontario L4G 1M1
 (tel): 905-727-0092
 (fax): 905-727-5517

NORTH **STAMP**

PROJECT		AQUAVISTA AT BAYSIDE TORONTO	
MERCHANTS WHARF TORONTO, ONTARIO			
DWG TITLE		P2 PARKING LEVEL SPRINKLER LAYOUT	
DATE	10/15/2015	PROJECT NO.	15-678
SCALE	1/8"=1'-0"	DWG NO.	SP3
DWN BY	M.B.	ISSUED FOR REVISION NO.	1.0
		OF SP20	