

REVISIONS		
1.0	ISSUED FOR TENDER	10/15/15

NOTES

SPRINKLER SYSTEM DESIGN CRITERIA:
PARKING GARAGE:
 AS PER NFPA 13 ORD. HAZARD GR. 1 0.15/1950
 SQ. FT. (1500X1.3 FOR DRY SYSTEM)
 PLUS 250 GPM IH AND OH

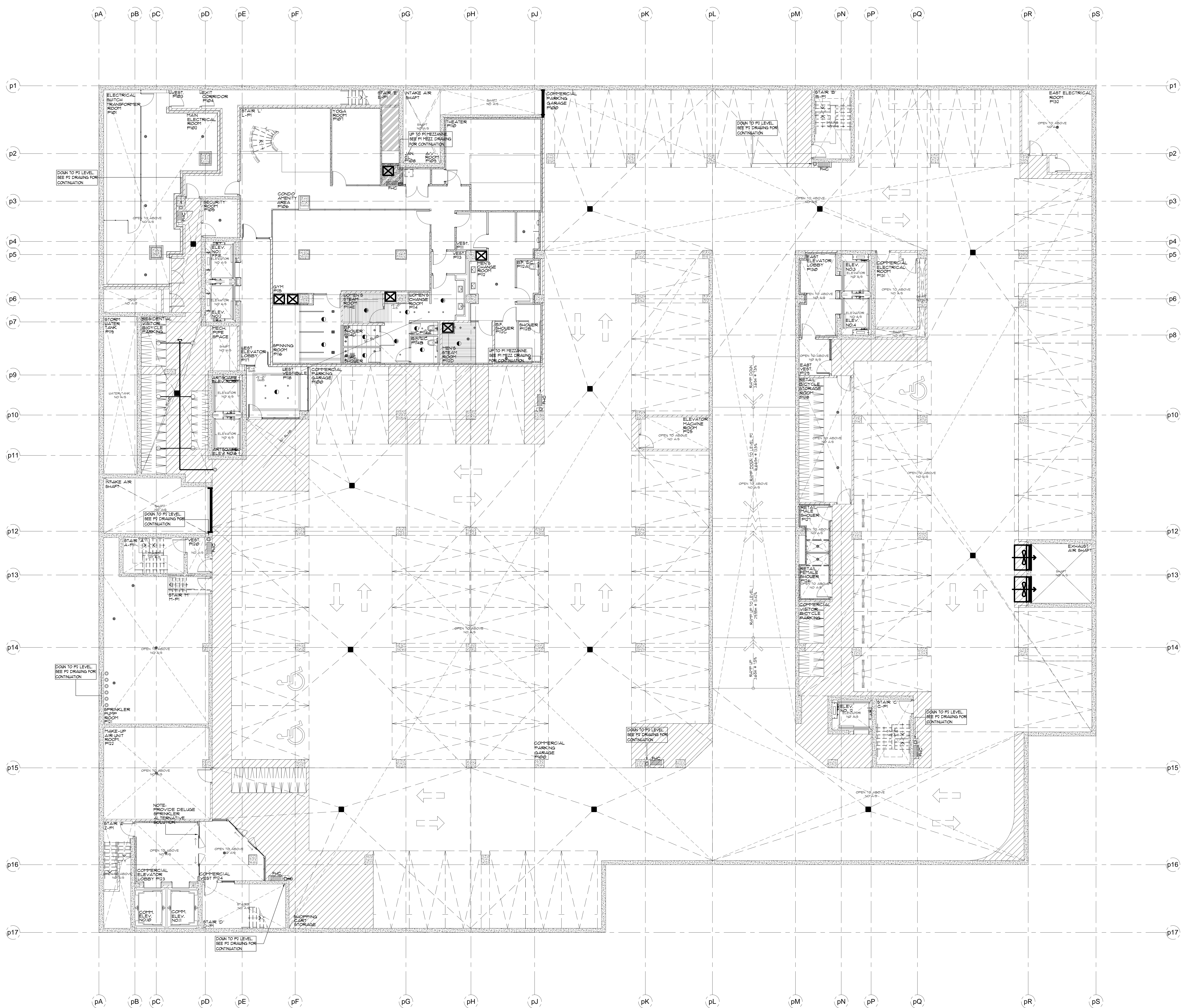
RETAIL SPACE:
 AS PER NFPA 13 ORD. HAZARD GR. 2 0.2/1500
 SQ. FT. PLUS 250 GPM IH AND OH

RESIDENTIAL UNITS:
 SHALL BE THE GREATER OF THE FOLLOWING:
 1. IN ACCORDANCE WITH MINIMUM FLOW RATES INDICATED IN INDIVIDUAL LISTINGS
 2. CALCULATED BASED ON DELIVERING A MINIMUM OF 0.1 GPM/FT² OVER THE DESIGN AREA IN ACCORDANCE WITH THE PROVISIONS OF 8.5.2.1 OR 8.5.2.2
 PLUS 100 GPM FOR IH & OH

MECHANICAL PENTHOUSE:
 AS PER NFPA 13 ORD. HAZARD GR. 2 0.2/1500
 SQ. FT. PLUS 250 GPM IH & OH

STANDPIPE SYSTEM DESIGN CRITERIA
 50 GPM FOR THE MOST REMOTE 1 1/2" OUTLET PLUS 50 GPM FOR ONE ADDITIONAL OUTLET AT A PRESSURE OF 65 PSI, FED THROUGH FIRE DEPARTMENT CONNECTION.
 250 GPM FOR THE MOST REMOTE 2 1/2" OUTLET PLUS 250 GPM FOR ONE ADDITIONAL OUTLET AT A PRESSURE OF 65 PSI FED THROUGH FIRE DEPARTMENT CONNECTION.

SPRINKLER PIPING NOTES:
 1. SPRINKLER MAIN PIPING IN CORRIDORS ON RESIDENTIAL LEVELS IS TO BE SCHEDULE 10 BLACK STEEL TYPE PIPE.
 2. SPRINKLER BRANCHLINE PIPING IN RESIDENTIAL UNITS IS TO BE BLAZEMASTER OR BLACK STEEL SCHEDULE 10/40 TYPE PIPE.



- SPRINKLER NOTES:**
- SPRINKLER DEFLECTORS TO BE LOCATED MINIMUM 1" BELOW LIGHTS AND CAPITALS MAXIMUM 12" BELOW CONCRETE DECK IN UNHEATED AREAS TO BE HEAT TRACED (BY OTHERS)
 - ALL EXTENDED COVERAGE SPRINKLERS LOCATED ON P1 LEVEL TO BE INSTALLED ON 1/2" OUTLETS
 - ALL STANDARD COVERAGE SPRINKLERS LOCATED ON P1 LEVEL TO BE INSTALLED ON 1" OUTLETS
 - SPRINKLER CONTRACTOR TO PROVIDE AUXILIARY DRAINS FOR ALL TRAPPED PIPING
 - ALL FIRE HOSE CABINETS ARE AS PER THE LOCATIONS SHOWN ON THE ARCHITECTURAL DRAWINGS

SPRINKLER LEGEND

⊗	TYCO SERIES EC-14 3/4" 155°F EC SR BRASS UPRIGHT SPRINKLER K=5.6 OH 1 MAX. COV. 20'X20' MAX. 12" DEFLECTOR	
⊙	TYCO SERIES EC-14 3/4" 155°F EC SR BRASS UPRIGHT SPRINKLER K=5.6 OH 1 MAX. COV. 20'X20' MAX. 12" DEF. ON 1.25" OUTLETS	6
○	1/2" 165°F SC SR BRASS UPRIGHT SPRINKLER K=5.6 OH	6
◁	1/2" 165°F SC SR BRASS SIDEWALL SPRINKLER K=5.6 OH	6
●	1/2" 165°F SC OR CONCEALED PENDENT SPRINKLER C/W WHITE COVERPLATE K=5.6 LH	11
⊕	1/2" 286°F SC OR CHROME PENDENT SPRINKLER K=5.6 LH	
⊙	YIKING MODEL VK468 FREEDOM PENDENT SPRINKLER C/W CHROME ESCUTCHEON PLATE 1/2" K=4.9 155°F	
◁	YIKING MODEL VK460 FREEDOM RESIDENTIAL HORIZONTAL CHROME SIDEWALL SPRINKLER C/W CHROME ESCUTCHEON PLATE 1/2" K=5.8 155°F 6" DEFLECTOR U.S.D.	
⊞	FIRE HOSE CABINET SEE DETAIL SHEET SP1	8

TRIDEL
 BUILT FOR LIFE

4800 Dufferin St.
 Toronto, Ontario M3H 5S9
 (Tel): 416-861-9290

MIRENDA
 INTERNATIONAL INC. LTD.

15171 Yonge Street Suite 202
 Aurora Ontario L4G 1M1
 (Tel): 905-727-0092
 (Fax): 905-727-5517

NORTH **STAMP**

PROJECT AQUAVISTA AT BAYSIDE TORONTO
MERCHANTS WHARF TORONTO, ONTARIO

DWG TITLE P1 PARKING LEVEL SPRINKLER LAYOUT

DATE	10/15/2015	PROJECT NO.	15-678
SCALE	1/8"=1'-0"	DWG NO.	SP2
DWN BY	M.B.	ISSUED FOR REVISION NO.	1.0
			OF SP20

P1 PARKING LEVEL (-17'-6 1/2'') - SPRINKLERS
 SCALE 1/8" = 1'-0"