

**GENERAL AREA CIRCUITING - TABLE #1**

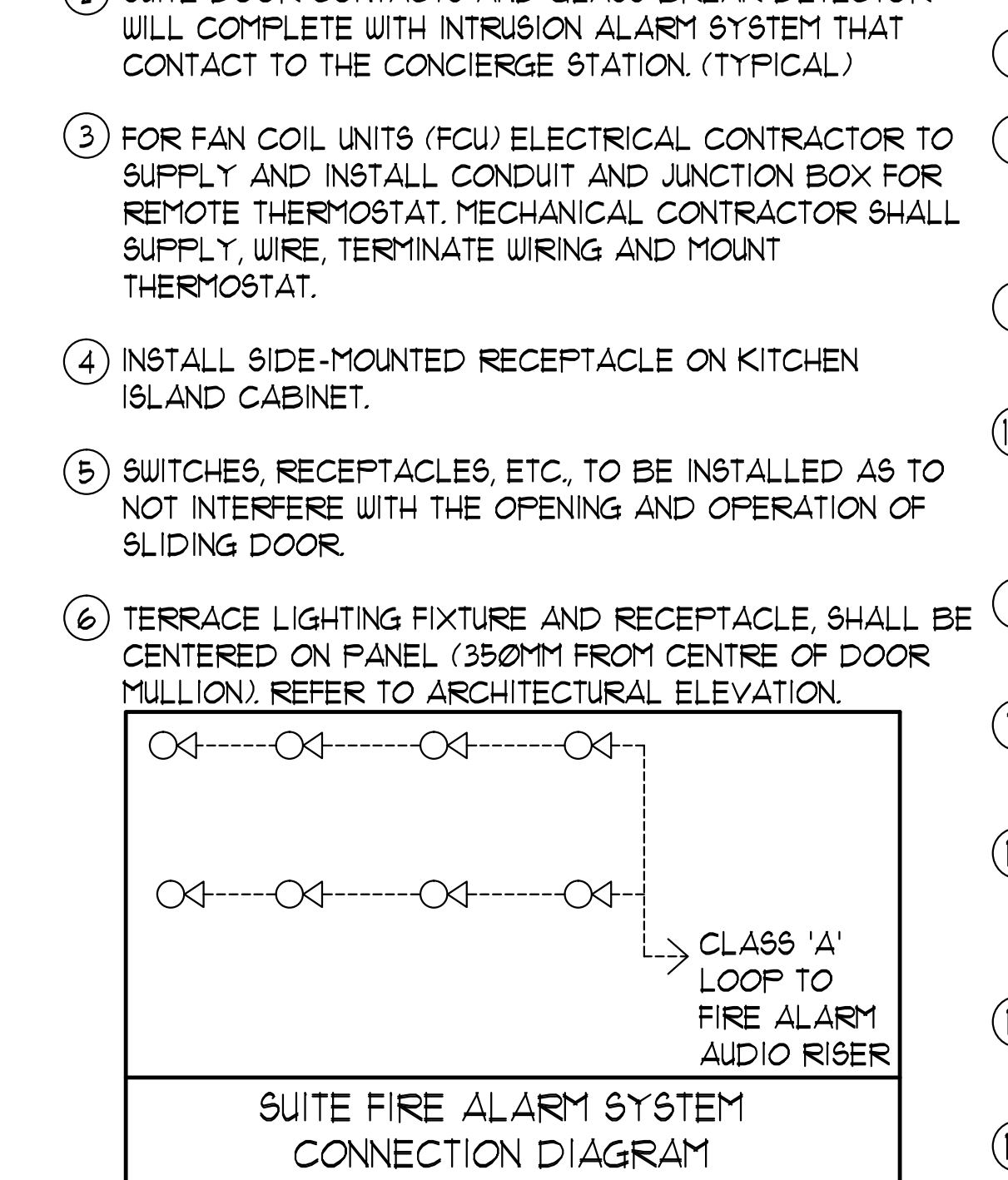
LIGHTING FIXTURE LOCATION	NOTES
P2 TO P1 - EXIT SIGNS	E-1
G/F TO MPH - EXIT SIGNS	E-3
MPH - EXIT SIGNS	ER-1
STAIR 'A' (P2 TO G/F)	E-5
STAIR 'B' (P2 TO G/F)	E-7
STAIR 'J' (G/F TO 4/F)	E-3
STAIR 'J' (5/F TO 3/F)	E-11
STAIR 'G' (G/F TO 14/F)	E-13
STAIR 'F' (G/F TO 14/F)	E-3
STAIR 'K' (14/F TO MPH) 4 MPH (G/F)	ER-3ER-5R-11R-13
	E-2E-4E-6E-16E-18E-10E-12E-14E-16
	B1-B21-4B1-6B1-8B1-10B1-12B1-14B1-16
	B1-10B1-12B1-14B1-16B1-18B1-20B1-22B1-24
CORRIDOR (2/F 4 3/F)	E-24
CORRIDOR (4/F 5/F)	E-26
CORRIDOR (6/F 4 3/F)	E-28
CORRIDOR (8/F TO 11/F)	E-30
CORRIDOR (12/F TO 14/F)	E-32
CORRIDOR 4 LOCKER (2/F)	B-46
CORRIDOR (3/F)	B-48
CORRIDOR (4/F)	B-50
CORRIDOR (5/F 4 6/F)	B-52
CORRIDOR (7/F 4 8/F)	B-54
CORRIDOR (9/F TO 11/F)	B-56
CORRIDOR (12/F TO 14/F)	B-58
ELEVATOR CAB	ER-6, ER-8ER-10
EXTERIOR SITE	E1-E11-3E1-5E1-7E1-9E1-6

**RECEPTACLE LOCATION**

RECEPTACLE LOCATION	NOTES
ELEC. S. CLOSET (G/F TO 3/F)	B-2
ELEC. N. CLOSET (2/F TO 3/F)	B-4
ELEC. N. CLOSET (10/F TO 14/F)	B-6
ELEC. N. CLOSET (22/F TO 32/F)	B-8
ELEV. LOBBY (P2 TO 8/F)	B-10
CORRIDOR (2/F TO 8/F)	B-12B-14B-16B-18B-20B-22B-24
CORRIDOR (12/F TO 14/F)	B-26B-28
ELEV. LOBBY (9 TO 14/F)	B-30
CORRIDOR (18/F TO 14/F)	B-32B-34B-36B-38
STAIR 'A' (G/F) 1 (J/F 6/F 3/F)	B-40
STAIR 'F' (14/F) (J/F 5/F 2/F)	B-42
STAIR 'H' (14/F) (J/F 5/F 2/F)	B-44
STAIR 'K' 4 MPH	R-2

**KEY NOTES - INSUITE:**

- DESIGNATED "LAUNDRY RECEPTACLE" AS DEFINED BY ESA CODE 26-110(e)(1), 26-120(b) AND ESA BULLETIN 26-26-0 (WITHIN 3m RADIUS OF LAUNDRY CLOSET). RECEPTACLE SHALL BE CONNECTED TO A DEDICATED CIRCUIT. SEE DETAIL #4 ON DUG. E-35.
- SUITE DOOR CONTACTS AND GLASS BREAK DETECTOR WILL COMPLETE WITH INTRUSION ALARM SYSTEM THAT CONTACT TO THE CONCIERGE STATION (TYPICAL).
- FOR FAN COIL UNITS (FCU) ELECTRICAL CONTRACTOR TO SUPPLY AND INSTALL CONDUIT AND JUNCTION BOX FOR REMOTE THERMOSTAT. MECHANICAL CONTRACTOR SHALL SUPPLY WIRE, TERMINATE WIRING AND MOUNT THERMOSTAT.
- INSTALL SIDE-MOUNTED RECEPTACLE ON KITCHEN ISLAND CABINET.
- SWITCHES, RECEPTACLES, ETC. TO BE INSTALLED AS TO NOT INTERFERE WITH THE OPENING AND OPERATION OF SLIDING DOOR.
- TERRACE LIGHTING FIXTURE AND RECEPTACLE SHALL BE CENTERED ON PANEL (350MM FROM CENTRE OF DOOR MILLION). REFER TO ARCHITECTURAL ELEVATION.



**MOUNTING HEIGHT SCHEDULE (TO TOP OF BOX)**

OUTLET	SUITES	PUBLIC AREA
RECEPTACLE	400 MM AFF.	400 MM AFF.
TV OUTLET	400 MM AFF.	400 MM AFF.
TELEPHONE OUTLET	400 MM AFF.	400 MM AFF.
MULTI-PORT OUTLET	400 MM AFF.	400 MM AFF.
SWITCH	1200 MM AFF.	1200 MM AFF.
SECURITY PANEL	1200 MM AFF.	
SILENCE SWITCHES	1200 MM AFF.	
THERMOSTAT	1200 MM AFF.	1200 MM AFF.
INTERCOM		1200 MM AFF.
V.C. HANDSET		1200 MM AFF.
FULL STATION		1200 MM AFF.

**GENERAL NOTES - RESIDENTIAL:**

- ELECTRICAL DRAWINGS SHALL BE READ IN CONJUNCTION WITH MECHANICAL, STRUCTURAL, ARCHITECTURAL AND LANDSCAPE DRAWINGS.
- CONTRACTOR SHALL RUN CABLES WITHIN CEILING SLAB OR ENCLOSURES TO RETAIN 2 HOUR FIRE PROTECTION RATING FOR ALL LOADS THAT CONNECT TO EMERGENCY POWER.
- FIRE ALARM RISERS SHALL BE RUN IN 2 HOUR FIRE RATED ELECTRICAL CLOSET. REFER TO DUG. E-32 FOR RISER DIAGRAM AND DETAILS.
- STAIRWAY WALL MOUNTED EMERGENCY LIGHT FIXTURES SHALL BE MOUNTED @ 1' AFF. MIN.
- FOR STORAGE ROOM VENTILATION SYSTEM, DIV. 16 TO PROVIDE CONDUIT, WIRING AND SWITCH (S) TO START/STOP FAN AND DAMPER. FAN AND 110V ACTUATOR TO BE SUPPLIED AND INSTALLED BY DIV. 15.
- FOR UTILITY ROOM VENTILATION SYSTEM, DIV. 15 WILL PROVIDE LINE WIRING TO START/STOP FAN AND DAMPER. DIV. 16 TO PROVIDE CONDUIT AND WIRING TO START/STOP FAN AND DAMPER VIA THERMOSTAT. FAN AND 110V ACTUATOR TO BE SUPPLIED AND INSTALLED BY DIV. 15.

- FOR UNIT HEATER, DIV. 15 TO PROVIDE LINE VOLTAGE THERMOSTAT (T), DIV. 16 TO PROVIDE CONDUIT AND WIRING TO START/STOP UNIT HEATER.
- REFER TO SPRINKLER DRAWINGS FOR FIRE PROTECTION DEVICE TO BE CONNECTED TO THE FIRE ALARM SYSTEM. THE DEVICE AND EQUIPMENT SHALL FORM AN INTEGRAL PART OF THE ELECTRICAL CONTRACT.
- DIV. 16 SHALL SUPPLY AND INSTALL CONDUITS, WIRES AND INTERLOCK FANS TO MOTORIZED DAMPERS AND TO THE THERMOSTAT.
- DIV. 16 SHALL SUPPLY AND INSTALL CONDUITS, WIRES AND INTERLOCK FANS TO MOTORIZED DAMPERS AND TO THE THERMOSTAT.
- REFER TO SUITE PANEL SCHEDULES FOR INSUITE CIRCUIT ARRANGEMENT.
- ALL DUELLING UNIT RECEPTACLES EXCEPT IN KITCHEN SHALL BE TAMPER PROOF.
- PROVIDE GROUND FAULT PROTECTION FOR SUITE KITCHEN, AMENITY KITCHEN AND WASHROOM RECEPTACLES WITHIN 1500mm OF SINK.
- PROVIDE TELECOMMUNICATION BOX C/W BUILT-IN RECEPTACLE FOR TELECOMMUNICATION. TELECOMMUNICATION BOX SHALL BE COMPLIANT WITH THE TELECOM SERVICE PROVIDER SPECIFICATION. REFER TO DETAIL #9 ON DUG. E-35 FOR TELECOM JUNCTION BOX INSTALLATION.
- DRYER SENSOR TO START DRYER VENTILATION FAN AUTOMATICALLY WHEN DRYER IS RUNNING.
- ALL SMOKE ALARMS WITHIN THE SUITE SHALL BE HARDWIRED TOGETHER AND TO A 15A, 1P CIRCUIT BREAKER AHEAD OF OTHER LOADS.

**KEY NOTES - RESIDENTIAL - COMMON AREA:**

- FOR CIRCUITING, REFER TO TABLE #1.
- PROVIDE ALARM SMOKE DETECTOR AND RECEPTACLE AT EVERY THIRD FLOOR STAIR WELL STARTING FROM TOP FLOOR, AS PER TO DUG. E-32 FOR FIRE ALARM RISER DIAGRAM.
- PROVIDE TELECOMMUNICATION BACKBOARD C/W 115V, 1A, 15A RECEPTACLE AS PER COMMUNICATION RISER DIAGRAM ON DUG. E-31.
- CONTRACTOR SHALL REFER TO ELECTRICAL SINGLE LINE DIAGRAM ON DUG. E-30 AND SDP RISER ON DUG. E-31 FOR SDP LOCATIONS AND DISTRIBUTION.
- PROVIDE CONDUIT AS PER RISER DETAIL #9 ON DUG. E-35 FOR TRISORTER CONTROL SYSTEM.
- REFER TO SUPERVISED VALVE AND FLOW SWITCH SCHEDULE ON DUG. E-33 FOR DETAILS ON TYPICAL FLOORS.
- EMERGENCY LIGHT FIXTURES IN LOCKERS, STORAGE, GARBAGE, UTILITY AND SERVICE ROOMS SHALL BE CONNECTED TO BOTH NORMAL AND EMERGENCY POWER AS PER DETAIL #1 OF DUG. E-35.
- ALLOCATE 2, 120V, 15A, CIRCUITS FROM PANEL "LP-P" FOR MECHANICAL CONTROL, CONTRACTOR COORDINATE WITH DIV. 15 FOR EXACT LOCATION.
- SWING STAGE WINDOW WASHING TWIST LOCK WITH LOCKOUTS RECEPTACLE 30A, 3P, 208V, 5UIRE (L1B-30R).
- REFER TO ARCHITECTURAL DRAWINGS FOR MOUNTING HEIGHT AND EXACT LOCATION OF EXTERIOR WALL MOUNTED LIGHT FIXTURE.
- DEDICATED FLOOR MOUNTED RECEPTACLE FOR FITNESS EQUIPMENT. EXACT LOCATION TO BE VERIFIED ON SITE.
- REFER TO INTERIOR DESIGNER/LANDSCAPE/ARCHITECTURAL DRAWINGS FOR EXACT LOCATION FOR FRIDGE, MICROWAVE AND OVER COUNTER RECEPTACLES.
- 1-APC SMART-UPS 150VA WITH LCD (120V) FOR EACH INTERCOM.
- DOORS RELEASED TO OPEN ON FIRE ALARM ACTIVATION.
- ACTIVATION OF FIRE ALARM SYSTEM SHALL ACTIVATE THE SUPPLY FANS. WHEN THE DUCT TYPE SMOKE DETECTOR IS ACTIVATED, THE ASSOCIATED SUPPLY FAN SHALL BE TURNED OFF WHEN THE MOTORIZED DAMPER IS ACTIVATED, THE DOOR SHALL BE RELEASED AND OPENED.
- PROVIDE "CACF" SIGN-RED LETTERS ON WHITE BACKGROUND WHICH FLASHES WHEN FIRE ALARM SYSTEM IS ACTIVATED.
- LIGHT FIXTURES TYPE E SHALL BE CONNECTED TO TIMER SWITCH TO BE "LIGHT ON AT NIGHT"

**ELECTRICAL LEGEND**

**LIGHTING**

- FLUORESCENT LIGHT FIXTURE, TYPE AS INDICATED
- LIGHT CONNECTED TO EMERGENCY POWER
- CEILING MOUNTED WALL MOUNTED LIGHT FIXTURE, INCREASED LETTER DENOTES TYPE
- POLE MOUNTED LIGHT FIXTURE, INCREASED LETTER DENOTES TYPE
- CARRIED CEILING LIGHT OUTLET
- TRACK LIGHT
- STRIP LIGHT
- UNDER CABINET FLUORESCENT LIGHT FIXTURE
- CEILING MOUNTED WALL MOUNTED EXIT SIGN
- EMERGENCY LIGHT RAMP REFLECTOR HEAD
- EMERGENCY BATTERY PACK
- OCCUPANCY SENSOR POWER PACKS
- SINGLE/DOUBLE POLE SINGLE/DOUBLE TRACK TOGGLE SWITCH RESPECTIVELY
- 1/4" x 1/4" (3/4" x 3/4") DENOTES 3-WAY/4-WAY FLOOR LIGHT, DIMMER SWITCHED LIGHT RESPECTIVELY
- MASTER LIGHTING SHUT-OFF SWITCH
- SENSOR WALL SWITCH, FIRE SELF POWERED
- OCCUPANCY SENSOR, CEILING MOUNTED

**POWER**

- REGULAR DUPLEX RECEPTACLE
- DUPLEX RECEPTACLE, GROUND FAULT INTERRUPT
- 3-PORT T-LOAD DUPLEX RECEPTACLE
- SWITCH RECEPTACLE TYPE AND CONFIGURATION AS SPECIFIED FOR DRIVER
- CONNECTION FOR OVERCOUNTER
- SWITCH RECEPTACLE TYPE AND CONFIGURATION AS SPECIFIED FOR DRIVER
- FLOOR MOUNTED DEVICES
- CEILING MOUNTED DEVICES
- DISCONNECT SWITCH, NON-FUSED
- DISCONNECT SWITCH, FUSED
- OPERATION STARTER
- FRACTIONAL MOTOR/FAN DIRECT CONNECTION
- DIRECT CONNECTION SINGLE PHASE
- DIRECT CONNECTION THREE PHASE
- THERMOSTAT
- DRYER SENSOR
- HEAT TRACE
- ELECTRICAL HEATER
- ELECTRICAL PANEL / SECURITY PANEL

**TELECOMMUNICATION**

- TYCABLE OUTLET
- TELEPHONE OUTLET
- TELEPHONE / CABLE (MULTI-PORT) OUTLET
- DATA OUTLET
- DATA/TELEPHONE OUTLET
- LOCATION OF TELECOM BOX C/W RECEPTACLE
- UPF LOCATION
- VIDEO INTERCOM
- RADIO RECEIVER

**SECURITY**

- INTERCOM / ENTERPHONE
- INTERCOM WITH CAMERA
- PANIC BUTTON / PANIC INTERCOM STATION
- CARD READER
- AUTOMATIC RELEASE CARD ACCESS/RADIO RECEIVER
- ELECTRIC STRIKE
- MAGLOCK
- DOOR CONTACT / WINDOW CONTACT
- GLASS BREAK DETECTOR
- AUTOMATIC DOOR OPERATOR
- MOTION DETECTOR
- PUSH BUTTON
- SECURITY CAMERA

**LIFE SAFETY**

- FIRE ALARM SMOKE DETECTOR
- SMOKE ALARM
- FIRE ALARM DUCT TYPE SMOKE DETECTOR
- FIRE ALARM HEAT DETECTOR
- FIXED TEMP. 68 °C DEGREE HEAT DETECTOR
- MOISTURE PROOF HEAT DETECTOR
- CO ALARM
- OPERATION SMOKE 1 CO ALARM
- CO SENSOR / NO SENSOR
- FIRE ALARM MANUAL PULL STATION
- FIREWORKER'S HANDSET
- FIRE ALARM SPEAKER/STROBE WALL MTD.
- FIRE ALARM SPEAKER/STROBE CEILING MTD.
- FIRE ALARM SPEAKER CEILING MTD.
- FIRE ALARM ANNUNCIATOR PANEL
- FIRE ALARM CONTROL PANEL

**REVISIONS**

NO.	DATE	DESCRIPTION
01/01/15		ISSUED FOR R.I. #1
01/02/15		ISSUED FOR R.I. #2
01/03/15		ISSUED FOR SECURITY REVIEW
01/04/15		ISSUED FOR R.I. #3
01/05/15		RE-ISSUED FOR TENDER
01/06/15		ISSUED FOR TENDER
01/07/15		RE-ISSUED FOR PERMIT
01/08/15		ISSUED FOR PERMIT
01/09/15		ISSUED FOR PERMIT
01/10/15		ISSUED FOR PERMIT
01/11/15		ISSUED FOR PERMIT
01/12/15		ISSUED FOR PERMIT

**CONTRACTOR MUST CHECK AND VERIFY ALL DIMENSIONS AND CONDITIONS BEFORE PROCEEDING WITH THE WORK. THIS DRAWING IS THE PROPERTY OF THE ENGINEER AND WILL BE RETURNED UPON COMPLETION OF THE WORK.**

**DRAWINGS ARE NOT TO BE SCALED**

**NOVA TRENDS CONSULTANTS**

115 West Beaver Creek Road, Unit 31  
Richmond Hill, Ontario L4B 3M1  
Tel: 905 882-5445  
Fax: 905 882-5441  
Email: cad@novatrendeng.com

**DRAWING TITLE: G/F SOUTH FLOOR PLAN LIGHTING LAYOUT**

**PROJECT FILE: ALEXANDRA PARK**

38 CAMERON STREET, BLOCK II  
TORONTO, ONTARIO

**DRAWN BY: S.O. CHECKED BY: S.T. SCALE: 1:50**

**DATE: FEB. 13. PROJECT NUMBER: 1313 DRAWING NUMBER: E-6**

