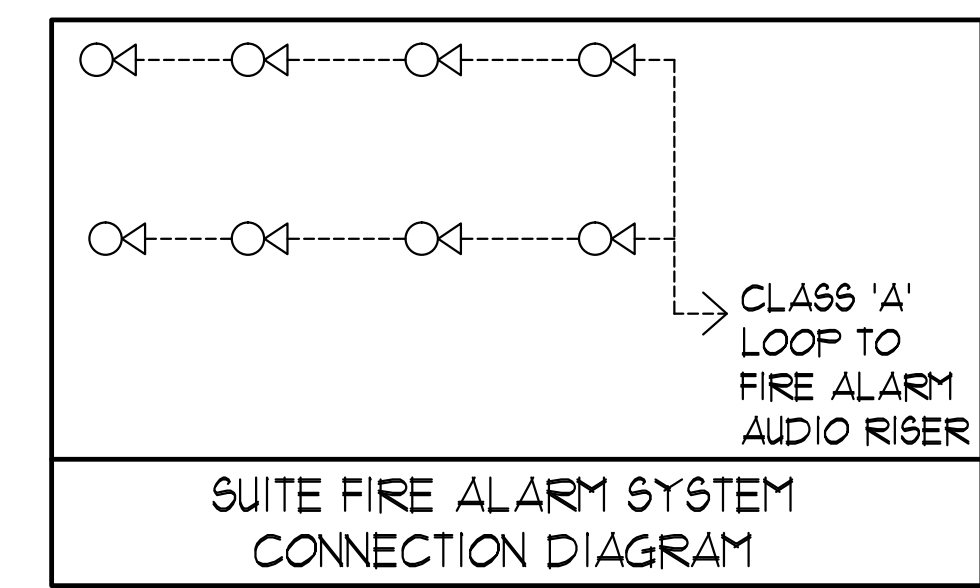


GENERAL AREA CIRCUITING - TABLE #1

FP TO FI - EXIT SIGNS	E-1
GF TO MPH - EXIT SIGNS	E-3
MPH - EXIT SIGNS	ER-1
STAIR 'A' (F2 TO G/F)	E-1
STAIR 'B' (F2 TO G/F)	E-1
STAIR 'J' (G/F TO 4/F)	E-9
STAIR 'J' (5/F TO 9/F)	E-11
STAIR 'G' (G/F TO 14/F)	E-13
STAIR 'F' (G/F TO 14/F)	E-15
STAIR 'K' (4/F TO MPH) 4 MPH	ER-3ER-5R-1R-1B
(G/F)	E-2E-4E-6E-10E-10E-12E-14E-16
(G/F)	B-1B-1B-1B-3B-10B-10B-14B-14B-16B-16B-18B-18B-22B-24B-24B-26B-26B-30B-30B
CORRIDOR (2/F 4 3/F)	E-24
CORRIDOR (4/F 1 5/F)	E-26
CORRIDOR (6/F 1 7/F)	E-28
CORRIDOR (8/F TO 11/F)	E-30
CORRIDOR (12/F TO 14/F)	E-32
CORRIDOR 1 LOCKER (2/F)	B-46
CORRIDOR (4/F)	B-48
CORRIDOR (5/F 4 6/F)	B-52
CORRIDOR (5/F 4 8/F)	B-54
CORRIDOR (5/F TO 11/F)	B-56
CORRIDOR (10/F TO 14/F)	B-58
ELEVATOR CAB	ER-6 ER-8ER-10
EXTERIOR SITE	E-1E-13E-15E-21E-21E-4E-6
RECEPTACLE LOCATION	CCT.*
ELEC. S. CLOSET (G/F TO 9/F)	B-2
ELEC. N. CLOSET (2/F TO 9/F)	B-4
ELEC. N. CLOSET (10/F TO 14/F)	B-6
ELEC. N. CLOSET (22/F TO 32/F)	B-8
ELEV. LOBBY (F2 TO 8/F)	B-10
CORRIDOR (2/F TO 8/F)	B-12B-14B-16B-18B-20B-22B-24
CORRIDOR (2/F TO 8/F)	B-26B-28
ELEV. LOBBY (9 TO 14/F)	B-30
CORRIDOR (9/F TO 14/F)	B-32B-34B-36B-38
STAIR A (G/F 4 J) 9/F 6/F 3/F	B-40
STAIR F (14/F) 11/F 8/F 2/F	B-42
STAIR H (14/F) 11/F 8/F 2/F	B-44
STAIR 'K' 4 MPH	R-2

- KEY NOTES - INSUITE:**
- DESIGNATED 'LAUNDRY RECEPTACLE' AS DEFINED BY ESA CODE 26-102(1), 26-102(2) AND ESA BULLETIN 26-26-0 (WITHIN 5m RADIUS OF LAUNDRY CLOSET) RECEPTACLE SHALL BE CONNECTED TO A DEDICATED CIRCUIT. SEE DETAIL #4 ON DUG. E-35.
 - SUITE DOOR CONTACTS AND GLASS BREAK DETECTOR WITH COMPLY WITH INTERCOM ALARM SYSTEM THAT CONTACTS TO THE CONCIERGE STATION. (TYPICAL)
 - FOR FAN COIL UNITS (FCU) ELECTRICAL CONTRACTOR TO SUPPLY AND INSTALL CONDUIT AND JUNCTION BOX FOR REMOTE THERMOSTAT MECHANICAL CONTRACTOR SHALL SUPPLY WIRE, TERMINATE WIRING AND MOUNT THERMOSTAT.
 - INSTALL SIDE-MOUNTED RECEPTACLE ON KITCHEN ISLAND CABINET.
 - SWITCHES, RECEPTABLES, ETC. TO BE INSTALLED AS TO NOT INTERFERE WITH THE OPENING AND OPERATION OF SLIDING DOOR.
 - TERRACE LIGHTING FIXTURE AND RECEPTACLE SHALL BE CENTERED ON PANEL, (350mm FROM CENTRE OF DOOR MULLION). REFER TO ARCHITECTURAL ELEVATION.



MOUNTING HEIGHT SCHEDULE (10 TOP OF BOX)

OUTLET	SUITES	PUBLIC AREA
RECEPTACLE	400 MM AFF.	400 MM AFF.
TV OUTLET	400 MM AFF.	400 MM AFF.
TELEPHONE OUTLET	400 MM AFF.	400 MM AFF.
MULTI-PORT OUTLET	400 MM AFF.	400 MM AFF.
SWITCH	1200 MM AFF.	1200 MM AFF.
SECURITY PANEL	1200 MM AFF.	
SILENCE SWITCHES	1200 MM AFF.	
THERMOSTAT	1200 MM AFF.	1200 MM AFF.
INTERCOM		1200 MM AFF.
V.C. HANDSET		1200 MM AFF.
FULL STATION		1200 MM AFF.

- GENERAL NOTES - RESIDENTIAL:**
- ELECTRICAL DRAWINGS SHALL BE READ IN CONJUNCTION WITH MECHANICAL, STRUCTURAL, ARCHITECTURAL AND LANDSCAPE DRAWINGS.
 - CONTRACTOR SHALL RUN CABLES WITHIN CEILING SLAB OR ENCLOSURES TO RETAIN 2 HOUR FIRE PROTECTION RATINGS FOR ALL LOADS THAT CONNECT TO EMERGENCY POWER.
 - FIRE ALARM RISERS SHALL BE RUN IN 2 HOUR FIRE RATED ELECTRICAL CLOSET. REFER TO DUG. E-32 FOR RISER DIAGRAM AND DETAILS.
 - STAIRWAY WALL MOUNTED EMERGENCY LIGHT FIXTURES SHALL BE MOUNTED @ 1' AFF. MIN.
 - FOR STORAGE ROOM VENTILATION SYSTEM, DIV. 16 TO PROVIDE CONDUIT, WIRING AND SWITCH (S) TO START/STOP FAN AND DAMPER. FAN AND 110V ACTUATOR TO BE SUPPLIED AND INSTALLED BY DIV. 15.
 - FOR UTILITY ROOM VENTILATION SYSTEM, DIV. 15 WILL PROVIDE LINE VOLTAGE THERMOSTAT (T) TO DIV. 16. DIV. 16 TO PROVIDE CONDUIT AND WIRING TO START/STOP FAN AND DAMPER VIA THERMOSTAT. FAN AND 110V ACTUATOR TO BE SUPPLIED AND INSTALLED BY DIV. 15.
 - FOR UNIT HEATER, DIV. 15 TO PROVIDE LINE VOLTAGE THERMOSTAT (T), DIV. 16 TO PROVIDE CONDUIT AND WIRING TO START/STOP UNIT HEATER.
 - REFER TO SPRINKLER DRAWINGS FOR FIRE PROTECTION DEVICE TO BE CONNECTED TO THE FIRE ALARM SYSTEM. THE DEVICE AND EQUIPMENT SHALL FORM AN INTEGRAL PART OF THE ELECTRICAL CONTRACT.
 - DIV. 16 SHALL SUPPLY AND INSTALL CONDUITS, WIRES AND INTERLOCK FANS TO MOTORIZED DAMPERS AND TO THE THERMOSTAT.
 - DIV. 16 SHALL SUPPLY AND INSTALL CONDUITS, WIRES AND INTERLOCK FANS TO MOTORIZED DAMPERS AND TO THE THERMOSTAT.
 - REFER TO SUITE PANEL SCHEDULES FOR INSUITE CIRCUIT ARRANGEMENT.
 - ALL DUELLING UNIT RECEPTABLES EXCEPT IN KITCHEN SHALL BE TAMPER PROOF.
 - PROVIDE GROUND FAULT PROTECTION FOR SUITE KITCHEN, AMENITY KITCHEN AND WASHROOM RECEPTABLES WITHIN 1800mm OF SINK.
 - PROVIDE TELECOMMUNICATION BOX (C/W BUILT-IN RECEPTACLE FOR TELECOMMUNICATION. TELECOMMUNICATION BOX SHALL BE COMPLIANT WITH THE TELECOM SERVICE PROVIDER SPECIFICATION. REFER TO DETAIL #3 ON DUG. E-35 FOR TELECOM JUNCTION BOX INSTALLATION.
 - DRYER SENSOR TO START DRYER VENTILATION FAN AUTOMATICALLY WHEN DRYER IS RUNNING.
 - ALL SMOKE ALARMS WITHIN THE SUITE SHALL BE HARDWIRED TOGETHER AND TO A 15A, 1P CIRCUIT BREAKER AHEAD OF OTHER LOADS.
 - ALL OUTDOOR RECEPTABLES SHALL BE WEATHERPROOF (LEGRADE CAT# 3232TRUR-GRY FOR NON-GFCI AND CAT# 1595TRUR-GRY FOR GFCI) AND SHALL BE EQUIPPED WITH A WHILE IN USE CAST ALUMINUM COVERPLATE (LEGRADE CAT# WUCAST1) COVERPLATE.
- KEY NOTES - RESIDENTIAL - COMMON AREA:**
- FOR CIRCUITING, REFER TO TABLE #1.
 - PROVIDE ALARM SPEAKER, SMOKE DETECTOR AND RECEPTACLE AT EVERY THIRD FLOOR STAIR WELL STARTING FROM TOP FLOOR, AS PER TO DUG. E-32 FOR FIRE ALARM RISER DIAGRAM.
 - PROVIDE TELECOMMUNICATION BACKBOARD C/W 15V, 1A RECEPTACLE AS PER COMMUNICATION RISER DIAGRAM ON DUG. E-31.
 - CONTRACTOR SHALL REFER TO ELECTRICAL SINGLE LINE DIAGRAM ON DUG. E-30 AND SDP RISER ON DUG. E-31 FOR SDP LOCATIONS AND DISTRIBUTION.
 - PROVIDE CONDUIT AS PER RISER DETAIL #19 ON DUG. E-35 FOR PROVIDER CONTROL SYSTEM.
 - REFER TO SUPERVISED VALVE AND FLOW SWITCH SCHEDULE ON DUG. E-33 FOR DETAILS ON TYPICAL FLOORS.
 - EMERGENCY LIGHT FIXTURES IN LOCKERS, STORAGE, GARBAGE, UTILITY AND SERVICE ROOMS SHALL BE CONNECTED TO BOTH NORMAL AND EMERGENCY POWER AS PER DETAIL #21 OF DUG. E-35.
 - ALLOCATE 2, 120V, 15A, CIRCUITS FROM PANEL 'LP-F' FOR MECHANICAL CONTRACTOR COORDINATE WITH DIV. 15 FOR EXACT LOCATION.
 - SUING STAGE WINDOW WASHING TWIST LOCK WITH LOCKOUTS RECEPTACLE 30A, 3P, 208V, 5WIRE (L15-30R).
 - REFER TO ARCHITECTURAL DRAWINGS FOR MOUNTING HEIGHT AND EXACT LOCATION OF EXTERIOR WALL MOUNTED LIGHT FIXTURE.
 - DEDICATED FLOOR MOUNTED RECEPTACLE FOR FITNESS EQUIPMENT. EXACT LOCATION TO BE VERIFIED ON SITE.
 - REFER TO INTERIOR DESIGNER/LANDSCAPE/ARCHITECTURAL DRAWINGS FOR EXACT LOCATION FOR FRIDGE, MICROWAVE AND OVER COUNTER RECEPTABLES.
 - 1-APC SMART-UPS 150VA WITH LCD (120V) FOR EACH INTERCOM.
 - DOORS RELEASED TO OPEN ON FIRE ALARM ACTIVATION.
 - ACTIVATION OF FIRE ALARM SYSTEM SHALL ACTIVATE THE SUPPLY FANS. WHEN THE DUCT TYPE SMOKE DETECTOR IS ACTIVATED, THE ASSOCIATED SUPPLY FAN SHALL BE TURNED OFF. WHEN THE MOTORIZED DAMPER IS ACTIVATED, THE DOOR SHALL BE RELEASE AND OPENED.
 - PROVIDE "CAC" SIGN-RED LETTERS ON WHITE BACKGROUND WHICH FLASHES WHEN FIRE ALARM SYSTEM IS ACTIVATED.

ELECTRICAL LEGEND

LIGHTING

- FLUORESCENT LIGHT FIXTURE, TYPE AS INDICATED
- LIGHT CONNECTED TO EMERGENCY POWER
- CEILING MOUNTED WALL MOUNTED LIGHT FIXTURE, INCREASED LETTER DENOTES TYPE
- POLE MOUNTED LIGHT FIXTURE, INCREASED LETTER DENOTES TYPE
- CARRIED CEILING LIGHT OUTLET
- TRACK LIGHT
- STRIP LIGHT
- UNDER CABINET FLUORESCENT LIGHT FIXTURE
- CEILING MOUNTED WALL MOUNTED EXIT SIGN
- MULTI-COLOR EMERGENCY LIGHT RECYCLE HEAD
- EMERGENCY BATTERY PACK
- OCCUPANCY SENSOR POWER PACKS
- SINGLE/DOUBLE POLE SINGLE/DOUBLE THROW TOGGLE SWITCH RESPECTIVELY
- 1/4" x 1/4" x 1/4" DENOTES 3-WAY 4-WAY FLOOR LIGHT, DIMMER SWITCHED LIGHT RESPECTIVELY
- MASTER LIGHTING SHUT-OFF SWITCH
- SENSOR WALL SWITCH, SELF POWERED
- OCCUPANCY SENSOR CEILING MOUNTED

POWER

- REGULAR DUPLEX RECEPTACLE
- DUPLEX RECEPTACLE GROUND FAULT INTERRUPT
- 3-PORT T-PORT DUPLEX RECEPTACLE
- ANGLE RECEPTACLE TYPE AND CONFIGURATION AS SPECIFIED FOR DRIVER
- CONNECTION FOR OVERCOUNTER
- ANGLE RECEPTACLE TYPE AND CONFIGURATION AS SPECIFIED FOR DRIVER
- FLOOR MOUNTED DEVICES
- DISCONNECT SWITCH NON-FUSED
- DISCONNECT SWITCH FUSED
- OPERATION STARTER
- FRACTIONAL MOTOR/FAN DIRECT CONNECTION
- DIRECT CONNECTION SINGLE PHASE
- DIRECT CONNECTION THREE PHASE
- THERMOSTAT
- DRYER SENSOR
- HEAT TRACE
- ELECTRICAL HEATER
- ELECTRICAL PANEL / SECURITY PANEL

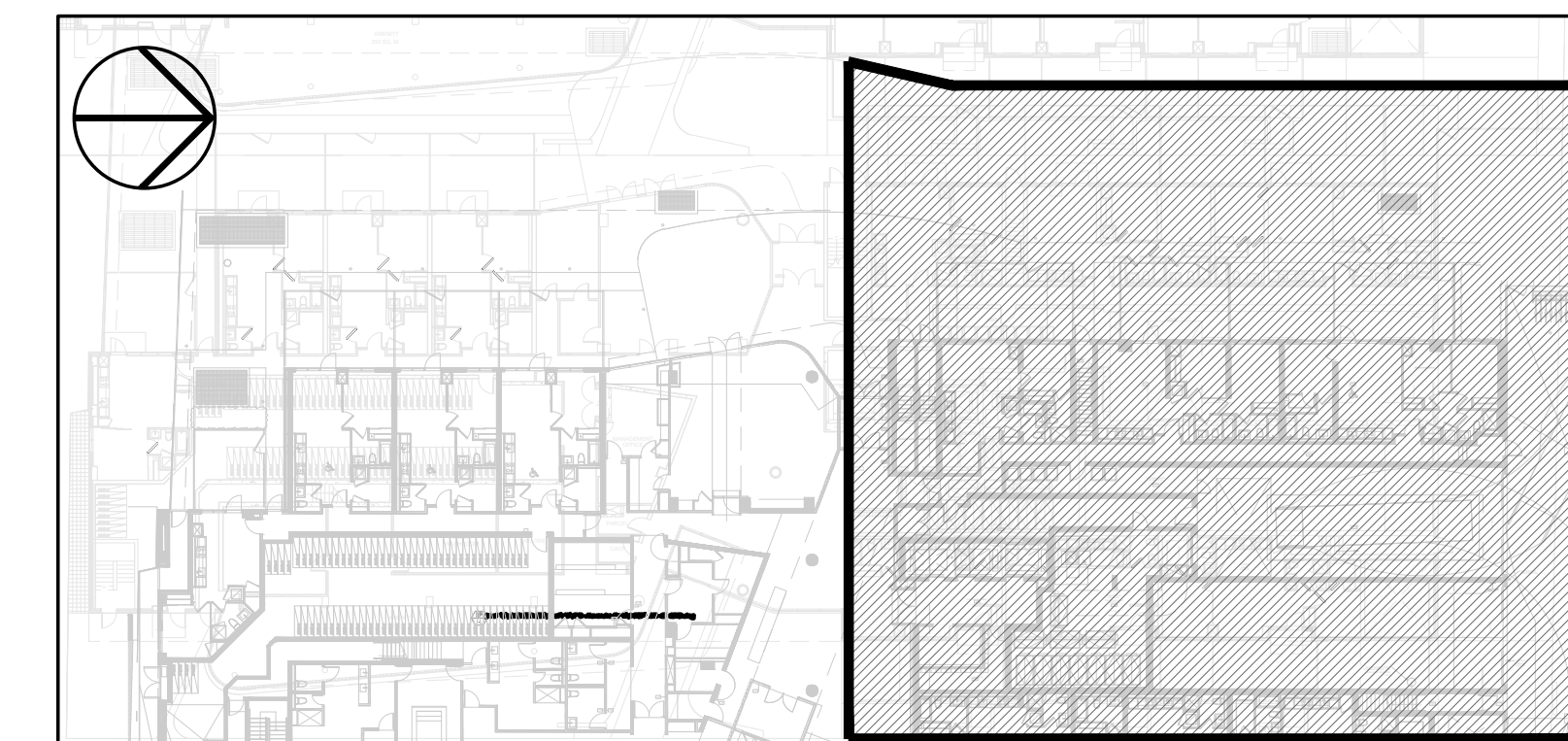
TELECOMMUNICATION

- TV/CABLE OUTLET
- TELEPHONE OUTLET
- TELEPHONE CABLE (MULTI-PORT OUTLET)
- DATA OUTLET
- DATA/TELEPHONE OUTLET
- WIFI LOCATION
- WIFI LOCATION
- VIDEO INTERCOM
- RADIO RECEIVER
- INTERCOM / ENTERPHONE
- INTERCOM WITH CAMERA
- PANIC BUTTON / PANIC INTERCOM STATION
- CARD READER
- AUTOMATIC RELEASE CARD ACCESS/RADIO RECEIVER
- ELECTRIC STRIKE
- MAGLOCK
- DOOR CONTACT / WINDOW CONTACT
- GLASS BREAK DETECTOR
- AUTOMATIC DOOR OPERATOR
- MOTION DETECTOR
- PUSH BUTTON
- SECURITY CAMERA

LIFE SAFETY

- FIRE ALARM SMOKE DETECTOR
- SMOKE ALARM
- FIRE ALARM DUCT TYPE SMOKE DETECTOR
- FIRE ALARM HEAT DETECTOR
- FIXED TEMP. 68 °C DEGREE HEAT DETECTOR
- MOISTURE PROOF HEAT DETECTOR
- CO ALARM
- CONVICTION SHOCK 1 GO ALARM
- GO SENSOR 1 NO SENSOR
- FIRE ALARM MANUAL CALL STATION
- FIRE FIGHTER'S HANDSET
- FIRE ALARM SPEAKER/STROBE WALL MTD.
- FIRE ALARM SPEAKER WALL MTD.
- FIRE ALARM SPEAKER/STROBE CEILING MTD.
- FIRE ALARM SPEAKER CEILING MTD.
- FIRE ALARM ANNUNCIATOR PANEL
- FIRE ALARM CONTROL PANEL

- SHALL BE CONNECTED TO LIGHTING FIXTURES CIRCUIT IN SAME ROOM.
- MOTORIZED DOOR TO BE CONNECTED TO FIRE ALARM SYSTEM BY DIV. 16.
- DIV. 16 TO VERIFY LOCATION OF MASTER CONTROL PANEL AND OTHER DEVICES THAT REQUIRE ELECTRICAL POWER WITH WASTE MANAGEMENT'S LAYOUT PRIOR TO PLACING THE ROUGH-IN FOR THESE DEVICES.
- INTERCOM ON LANDSCAPE PEDESTAL. PEDESTAL DESIGN TBD.
- DIV 16 TO INCLUDE TRIGGER LOOP THAT TIED TO A DELAY TIMER AND WOULD ENABLE AN INTERCOM CALL.



NOVA TRENDS

175 West Beaver Creek Road, Unit 31
Richmond Hill, Ontario L4B 3M1
Tel: 905-882-5445
Fax: 905-882-5441
Email: cad@novatrendeng.com

REVISIONS

NO.	DATE	DESCRIPTION
01		ISSUED FOR R.I.
02		BASED FOR SECURITY RISER
03		BASED FOR LIFE E.
04		BASED FOR FC
05		RE-BASED FOR RISER
06		RE-BASED FOR RISER
07		RE-BASED FOR RISER
08		RE-BASED FOR RISER
09		RE-BASED FOR RISER
10		RE-BASED FOR RISER
11		RE-BASED FOR RISER
12		RE-BASED FOR RISER
13		RE-BASED FOR RISER
14		RE-BASED FOR RISER
15		RE-BASED FOR RISER
16		RE-BASED FOR RISER
17		RE-BASED FOR RISER
18		RE-BASED FOR RISER
19		RE-BASED FOR RISER
20		RE-BASED FOR RISER
21		RE-BASED FOR RISER
22		RE-BASED FOR RISER
23		RE-BASED FOR RISER
24		RE-BASED FOR RISER
25		RE-BASED FOR RISER
26		RE-BASED FOR RISER
27		RE-BASED FOR RISER
28		RE-BASED FOR RISER
29		RE-BASED FOR RISER
30		RE-BASED FOR RISER
31		RE-BASED FOR RISER
32		RE-BASED FOR RISER
33		RE-BASED FOR RISER
34		RE-BASED FOR RISER
35		RE-BASED FOR RISER
36		RE-BASED FOR RISER
37		RE-BASED FOR RISER
38		RE-BASED FOR RISER
39		RE-BASED FOR RISER
40		RE-BASED FOR RISER
41		RE-BASED FOR RISER
42		RE-BASED FOR RISER
43		RE-BASED FOR RISER
44		RE-BASED FOR RISER
45		RE-BASED FOR RISER
46		RE-BASED FOR RISER
47		RE-BASED FOR RISER
48		RE-BASED FOR RISER
49		RE-BASED FOR RISER
50		RE-BASED FOR RISER

REVISIONS

CONTRACTOR MUST CHECK AND VERIFY ALL DIMENSIONS AND CONDITIONS AS SHOWN ON THIS DRAWING PRIOR TO THE BEGINNING OF WORK. THIS DRAWING IS THE PROPERTY OF THE ENGINEER AND SHALL BE KEPT IN GOOD CONDITION AT ALL TIMES. NO PARTS OF THIS DRAWING ARE TO BE REPRODUCED OR COPIED WITHOUT THE WRITTEN PERMISSION OF THE ENGINEER.

NOVA TRENDS

175 West Beaver Creek Road, Unit 31
Richmond Hill, Ontario L4B 3M1
Tel: 905-882-5445
Fax: 905-882-5441
Email: cad@novatrendeng.com

PROJECT FILE

ALEXANDRA PARK

38 CAMERON STREET, BLOCK II ONTARIO

PROJECT NO. 1313

DATE: FEB, 13

DRAWN BY: S.O.

CHECKED BY: S.T.

SCALE: 1:50

DRAWING NO.: E-5

OF: 07