

**GENERAL AREA CIRCUITING - TABLE #1**

LIGHTING FIXTURE LOCATION CGL-\*

NIGHT LIGHT OR EXIT SIGNS E-1  
 G/F TO MPH - EXIT SIGNS E-3  
 MPH - EXIT SIGNS ER-1  
 STAIR 'A' (G/F TO G/F) E-5  
 STAIR 'B' (F2 TO G/F) E-7  
 STAIR 'C' (G/F TO G/F) E-3  
 STAIR 'D' (G/F TO G/F) E-3  
 STAIR 'E' (G/F TO G/F) E-11  
 STAIR 'F' (G/F TO G/F) E-13  
 STAIR 'G' (G/F TO G/F) E-3  
 STAIR 'H' (G/F TO G/F) E-3  
 STAIR 'I' (G/F TO MPH) 4 MPH (G/F) E-2E-4E-6E-16E-18E-10E-12E-14E-16  
 B1-B2-B3-B4-B5-B6-B7-B8-B9-B10-B11-B12-B13-B14-B15-B16-B17-B18-B19-B20-B21-B22-B23-B24  
 CORRIDOR (2/F TO 4/F) E-24  
 CORRIDOR (4/F TO 5/F) E-26  
 CORRIDOR (6/F TO 8/F) E-28  
 CORRIDOR (8/F TO 11/F) E-30  
 CORRIDOR (12/F TO 14/F) E-32  
 CORRIDOR 4 LOCKER (2/F) B-46  
 CORRIDOR (3/F) B-48  
 CORRIDOR (4/F) B-50  
 CORRIDOR (5/F TO 6/F) B-52  
 CORRIDOR (7/F TO 8/F) B-54  
 CORRIDOR (9/F TO 11/F) B-56  
 CORRIDOR (12/F TO 14/F) B-58  
 ELEVATOR CAB ER-6, ER-8ER-10  
 EXTERIOR SITE E1-E11-E12-E13-E14-E15-E16  
 RECEPTACLE LOCATION CGL-\*

ELEC. S. CLOSET (G/F TO 9/F) B-2  
 ELEC. N. CLOSET (2/F TO 9/F) B-4  
 ELEC. N. CLOSET (10/F TO 14/F) B-6  
 ELEC. N. CLOSET (22/F TO 32/F) B-8  
 ELEV. LOBBY (F2 TO 8/F) B-10  
 CORRIDOR (2/F TO 8/F) B-12B-14B-16B-18B-20B-22B-24  
 CORRIDOR (2/F TO 5/F) B-26B-28  
 ELEV. LOBBY (9 TO 14/F) B-30  
 CORRIDOR (13/F TO 14/F) B-32B-34B-36B-38  
 STAIR 'A' (G/F TO 13/F) B-40  
 STAIR 'F' (14/F) B-42  
 STAIR 'H' (14/F) B-44  
 STAIR 'K' 4 MPH R-2

**GENERAL NOTES - RESIDENTIAL:**

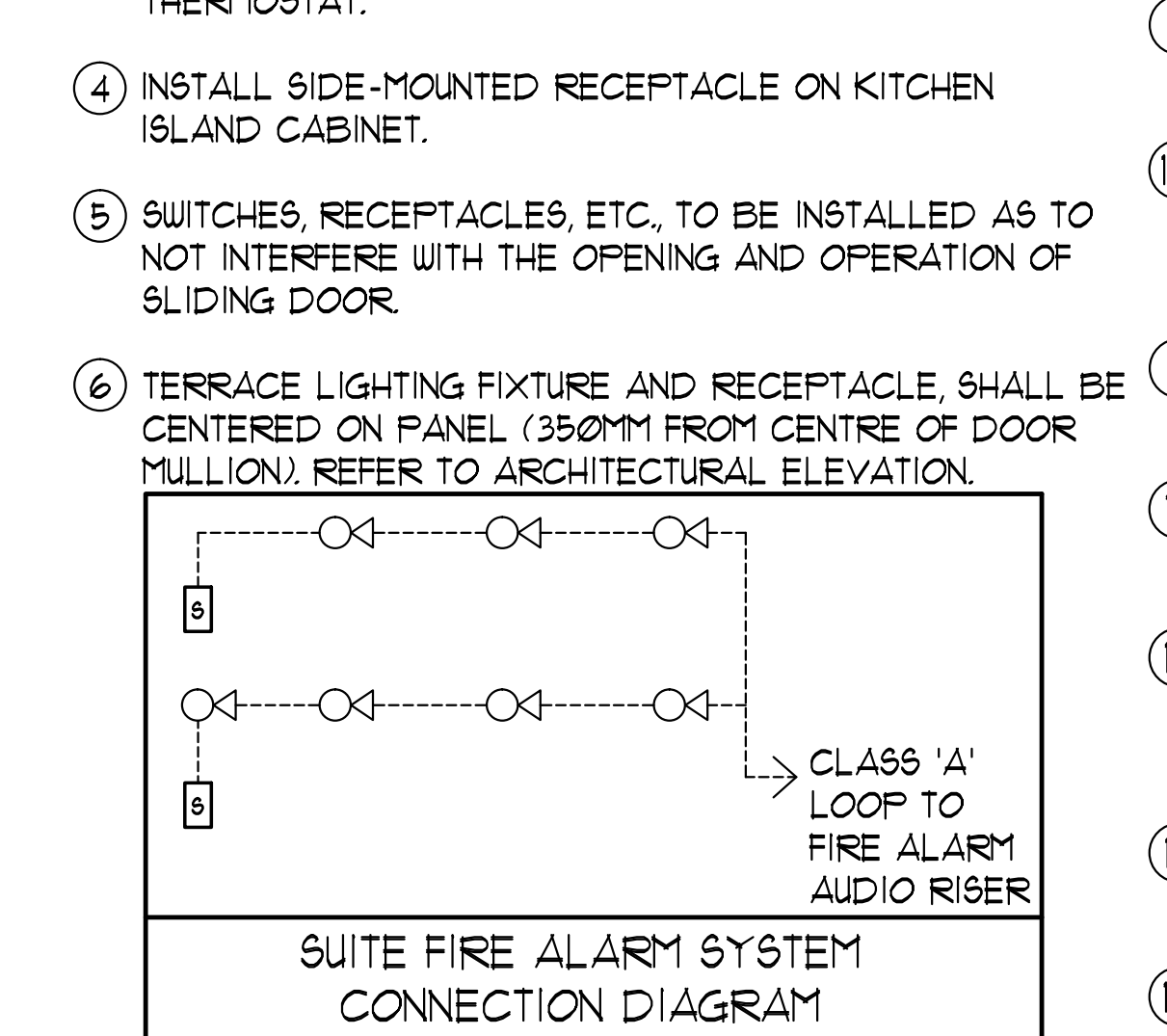
- ELECTRICAL DRAWINGS SHALL BE READ IN CONJUNCTION WITH MECHANICAL, STRUCTURAL, ARCHITECTURAL AND LANDSCAPE DRAWINGS.
- CONTRACTOR SHALL RUN CABLES WITHIN CEILING SLAB OR ENCLOSURES TO RETAIN 2 HOUR FIRE PROTECTION RATING FOR ALL LOADS THAT CONNECT TO EMERGENCY POWER.
- FIRE ALARM RISERS SHALL BE RUN IN 2 HOUR FIRE RATED ELECTRICAL CLOSET. REFER TO DUG. E-32 FOR RISER DIAGRAM AND DETAILS.
- STAIRWAY WALL MOUNTED EMERGENCY LIGHT FIXTURES SHALL BE MOUNTED @ 1' AFF. MIN.
- FOR STORAGE ROOM VENTILATION SYSTEM, DIV. 16 TO PROVIDE CONDUIT, WIRING AND SWITCH (S) TO START/STOP FAN AND DAMPER. FAN AND 110V ACTUATOR TO BE SUPPLIED AND INSTALLED BY DIV. 15.
- FOR UTILITY ROOM VENTILATION SYSTEM, DIV. 15 WILL PROVIDE LINE WIRING THERMOSTAT (T) TO DIV. 16. DIV. 16 TO PROVIDE CONDUIT AND WIRING TO START/STOP FAN AND DAMPER VIA THERMOSTAT. FAN AND 110V ACTUATOR TO BE SUPPLIED AND INSTALLED BY DIV. 15.

**KEY NOTES - INSUITE:**

- DESIGNATED "LAUNDRY RECEPTACLE" AS DEFINED BY ESA CODE 26-710(e)(1), 26-720(b) AND ESA BULLETIN 26-26-0 (WITHIN 3M RADIUS OF LAUNDRY CLOSET). RECEPTACLE SHALL BE CONNECTED TO A DEDICATED CIRCUIT. SEE DETAIL #4 ON DUG. E-35.
- SUITE DOOR CONTACTS AND GLASS BREAK DETECTOR WILL COMPLETE WITH INTRUSION ALARM SYSTEM THAT CONTACT TO THE CONCRETE STATION (TYPICAL).
- FOR FAN COIL UNITS (FCU) ELECTRICAL CONTRACTOR TO SUPPLY AND INSTALL CONDUIT AND JUNCTION BOX FOR REMOTE THERMOSTAT. MECHANICAL CONTRACTOR SHALL SUPPLY WIRE, TERMINATE WIRING AND MOUNT THERMOSTAT.
- INSTALL SIDE-MOUNTED RECEPTACLE ON KITCHEN ISLAND CABINET.
- SWITCHES, RECEPTACLES, ETC. TO BE INSTALLED AS TO NOT INTERFERE WITH THE OPENING AND OPERATION OF SLIDING DOOR.
- TERRACE LIGHTING FIXTURE AND RECEPTACLE SHALL BE CENTERED ON PANEL (350MM FROM CENTRE OF DOOR MILLION). REFER TO ARCHITECTURAL ELEVATION.

**KEY NOTES - RESIDENTIAL - COMMON AREA:**

- FOR CIRCUITING, REFER TO TABLE #1.
- PROVIDE ALARM SMOKE DETECTOR AND RECEPTACLE AT EVERY THIRD FLOOR STAIR WELL STARTING FROM TOP FLOOR. AS PER TO DUG. E-32 FOR FIRE ALARM RISER DIAGRAM.
- PROVIDE TELECOMMUNICATION BACKBOARD C/W 115V, 1A, 15A RECEPTACLE AS PER COMMUNICATION RISER DIAGRAM ON DUG. E-31.
- CONTRACTOR SHALL REFER TO ELECTRICAL SINGLE LINE DIAGRAM ON DUG. E-30 AND SDP RISER ON DUG. E-31 FOR SDP LOCATIONS AND DISTRIBUTION.
- PROVIDE CONDUIT AS PER RISER DETAIL #19 ON DUG. E-35 FOR TRISORTER CONTROL SYSTEM.
- REFER TO SUPERVISED VALVE AND FLOW SWITCH SCHEDULE ON DUG. E-33 FOR DETAILS ON TYPICAL FLOORS.
- EMERGENCY LIGHT FIXTURES IN LOCKERS, STORAGE, GARBAGE, UTILITY AND SERVICE ROOMS SHALL BE CONNECTED TO BOTH NORMAL AND EMERGENCY POWER AS PER DETAIL #21 OF DUG. E-35.
- ALLOCATE 2, 120V, 15A, CIRCUITS FROM PANEL "LP-F" FOR MECHANICAL CONTROL. CONTRACTOR COORDINATE WITH DIV. 15 FOR EXACT LOCATION.
- SWING STAGE WINDOW WASHING TWIST LOCK WITH LOCKOUTS RECEPTACLE 30A, 3P, 208V, 5UIRE (L1B-30R).
- REFER TO ARCHITECTURAL DRAWINGS FOR MOUNTING HEIGHT AND EXACT LOCATION OF EXTERIOR WALL MOUNTED LIGHT FIXTURE.
- DEDICATED FLOOR MOUNTED RECEPTACLE FOR FITNESS EQUIPMENT. EXACT LOCATION TO BE VERIFIED ON SITE.
- REFER TO INTERIOR DESIGNER/LANDSCAPE/ARCHITECTURAL DRAWINGS FOR EXACT LOCATION FOR FRIDGE, MICROWAVE AND OVER COUNTER RECEPTACLES.
- 1-APC SMART-UPS 150VA WITH LCD (120V) FOR EACH INTERCOM.
- DOORS RELEASED TO OPEN ON FIRE ALARM ACTIVATION.
- ACTIVATION OF FIRE ALARM SYSTEM SHALL ACTIVATE THE SUPPLY FANS. WHEN THE DUCT TYPE SMOKE DETECTOR IS ACTIVATED, THE ASSOCIATED SUPPLY FAN SHALL BE TURNED OFF WHEN THE MOTORIZED DAMPER IS ACTIVATED, THE DOOR SHALL BE RELEASE AND OPENED.
- PROVIDE "CACF" SIGN-RED LETTERS ON WHITE BACKGROUND WHICH FLASHES WHEN FIRE ALARM SYSTEM IS ACTIVATED.
- LIGHT FIXTURES TYPE E SHALL BE CONNECTED TO TIMER SWITCH TO BE "LIGHT ON AT NIGHT".



**MOUNTING HEIGHT SCHEDULE (TO TOP OF BOX)**

OUTLET	SUITES	PUBLIC AREA
RECEPTACLE	400 MM AFF.	400 MM AFF.
TV OUTLET	400 MM AFF.	400 MM AFF.
TELEPHONE OUTLET	400 MM AFF.	400 MM AFF.
MULTI-PORT OUTLET	400 MM AFF.	400 MM AFF.
SWITCH	1200 MM AFF.	1200 MM AFF.
SECURITY PANEL	1200 MM AFF.	
SILENCE SWITCHES	1200 MM AFF.	
THERMOSTAT	1200 MM AFF.	1200 MM AFF.
INTERCOM		1200 MM AFF.
V.C. HANDSET		1200 MM AFF.
FULL STATION		1200 MM AFF.

**ELECTRICAL LEGEND**

**LIGHTING**

- FLUORESCENT LIGHT FIXTURE, TYPE AS INDICATED
- LIGHT CONNECTED TO EMERGENCY POWER
- CEILING MOUNTED WALL MOUNTED LIGHT FIXTURE, INCREASED LETTER DENOTES TYPE
- POLE MOUNTED LIGHT FIXTURE, INCREASED LETTER DENOTES TYPE
- CARRIED CEILING LIGHT OUTLET
- TRACK LIGHT
- STRIP LIGHT
- UNDER CABINET FLUORESCENT LIGHT FIXTURE
- CEILING MOUNTED WALL MOUNTED EXIT SIGN
- EMERGENCY LIGHT RISE, REFLECTOR HEAD
- EMERGENCY BATTERY PACK
- OCCUPANCY SENSOR POWER PACKS
- SINGLE/DOUBLE POLE SINGLE/DOUBLE TRACK TOGGLE SWITCH RESPECTIVELY
- 1/4" x 1/4" (3/4" x 3/4") DENOTES 3-WAY/4-WAY FLOUT LIGHT, DIMMER SWITCHED LIGHT RESPECTIVELY
- MASTER LIGHTING SHUT-OFF SWITCH
- SENSOR WALL SWITCH, SELF POWERED
- OCCUPANCY SENSOR, CEILING MOUNTED

**POWER**

- REGULAR DUPLEX RECEPTACLE
- DUPLEX RECEPTACLE, GROUND FAULT INTERRUPT
- 3-PIN T-100T DUPLEX RECEPTACLE
- ANGLE RECEPTACLE, TYPE AND CONFIGURATION AS SPECIFIED FOR DRIVER
- CONNECTION FOR OVERCOUNTER
- DRIVER COUNTER DEVICE
- FLOOR MOUNTED DEVICES
- DISCONNECT SWITCH, NON-FUSED
- DISCONNECT SWITCH, FUSED
- OPERATION STARTER
- FRACTIONAL MOTOR/FAN DIRECT CONNECTION
- DIRECT CONNECTION SINGLE PHASE
- DIRECT CONNECTION THREE PHASE
- THERMOSTAT
- DRYER SENSOR
- HEAT TRACE
- ELECTRICAL HEATER
- ELECTRICAL PANEL / SECURITY PANEL

**TELECOMMUNICATION**

- TV CABLE OUTLET
- TELEPHONE OUTLET
- TELEPHONE / CABLE (MULTI-PORT) OUTLET
- DATA OUTLET
- DATA/TELEPHONE OUTLET
- TELECOM JUNCTION BOX C/W RECEPTACLE
- WIFI LOCATION
- VIDEO INTERCOM
- RADIO RECEIVER
- INTERCOM / ENTERPHONE
- INTERCOM WITH CAMERA
- PANIC BUTTON / PANIC INTERCOM STATION
- CARD READER
- AUTOMATIC RELEASE CARD ACCESS/RADIO RECEIVER
- ELECTRIC STRIKE
- MAGLOCK
- DOOR CONTACT / WINDOW CONTACT
- GLASS BREAK DETECTOR
- AUTOMATIC DOOR OPERATOR
- MOTION DETECTOR
- PUSH BUTTON
- SECURITY CAMERA

**LIFE SAFETY**

- FIRE ALARM SMOKE DETECTOR
- SMOKE ALARM
- FIRE ALARM DUCT TYPE SMOKE DETECTOR
- FIRE ALARM HEAT DETECTOR
- FIXED TEMP. 68 °C DEGREE HEAT DETECTOR
- MOISTURE PROOF HEAT DETECTOR
- CO ALARM
- CONVENTION SMOKE 1 CO ALARM
- CO SENSOR / NO SENSOR
- FIRE ALARM MANUAL PULL STATION
- FIREWORKER'S HANDSET
- FIRE ALARM SPEAKER/STROBE WALL MTD.
- FIRE ALARM SPEAKER, WALL MTD.
- FIRE ALARM SPEAKER/STROBE CEILING MTD.
- FIRE ALARM SPEAKER/STROBE CEILING MTD.
- FIRE ALARM ANNUNCIATOR PANEL
- FIRE ALARM CONTROL PANEL

SEE DRAWING E-5 FOR CONTINUATION

Drawing name: \Automation\Current\1313 - Alexandra Park\1313-67\_G/F 1313.dwg Plotter: Jan 13, 2019 - 4:55pm

**REVISIONS**

NO.	DATE	DESCRIPTION
01	13/01/19	ISSUED FOR PTA #1
02	13/01/19	RE-ISSUED FOR TENDER
03	13/01/19	ISSUED FOR RISER
04	13/01/19	RE-ISSUED FOR PERMIT
05	13/01/19	ISSUED FOR PERMIT
06	13/01/19	ISSUED FOR PERMIT

CONTRACTOR MUST CHECK AND VERIFY ALL DIMENSIONS AND CONDITIONS BEFORE PROCEEDING WITH THE WORK. THIS DRAWING IS THE PROPERTY OF THE ENGINEER AND MUST BE RETURNED UPON COMPLETION OF THE WORK.

DRAWINGS ARE NOT TO BE SCALED

**NOVA TRENDS**

115 West Beaver Creek Road, Unit 31  
 Richmond Hill, Ontario L4B 3M1  
 Tel: 905 882-5445  
 Fax: 905 882-5441  
 Email: cad@novatrendeng.com

**DRAWING TITLE**  
 G/F SOUTH FLOOR PLAN LIGHTING LAYOUT

**PROJECT FILE**  
 ALEXANDRA PARK

38 CAMERON STREET, BLOCK II  
 TORONTO ONTARIO

**DRAWN BY:** S.O. **CHECKED BY:** S.T. **SCALE:** 1:50  
**DATE:** FEB, 13 **PROJECT NUMBER:** 1313 **DRAWING NUMBER:** E-6 of 07

