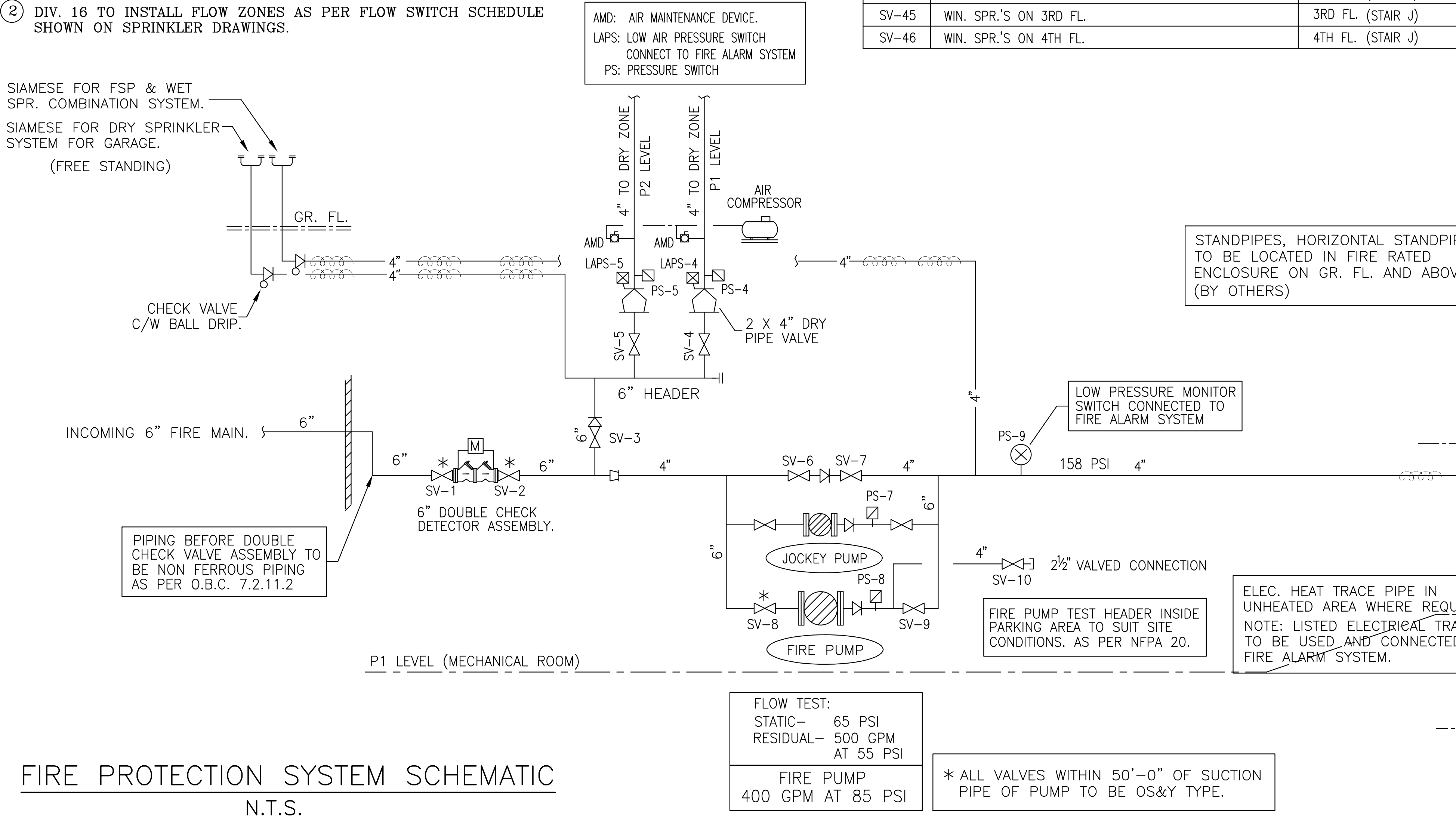


FIRE PROTECTION SYSTEM PRESSURE SWITCH SCHEDULE		
ZONE	DESCRIPTION	LOCATION
PS-4	LOW PRESSURE MONITOR SWITCH	
PS-4	PRESSURE SWITCH FOR P-1 PARKING DRY SPR. SYSTEM	SPRINKLER ROOM
PS-5	PRESSURE SWITCH FOR P-2 PARKING DRY SPR. SYSTEM	SPRINKLER ROOM
PS-7	PRESSURE SWITCH FOR JOCKEY PUMP	SPRINKLER ROOM
PS-8	PRESSURE SWITCH FOR FIRE PUMP	SPRINKLER ROOM
PS-9	PRESSURE SWITCH FOR COMBINATION FEED MAIN.	SPRINKLER ROOM
LAPS-1	LOW AIR PRESSURE SWITCH	SPRINKLER ROOM
LAPS-2	LOW AIR PRESSURE SWITCH	SPRINKLER ROOM

FIRE PROTECTION SYSTEM SUPERVISED VALVES SCHEDULE		
ZONE	DESCRIPTION	LOCATION
SV-1	INCOMING FIRE MAIN ISOLATION	SPRINKLER ROOM
SV-2	INCOMING FIRE MAIN ISOLATION	SPRINKLER ROOM
SV-3	DRY SPR. SYSTEM HEADER MAIN ISOLATION	SPRINKLER ROOM
SV-4	P-1 PARKING DRY SPR. SYSTEM	SPRINKLER ROOM
SV-5	P-2 PARKING DRY SPR. SYSTEM	SPRINKLER ROOM
SV-6	FIRE PUMP BY-PASS	SPRINKLER ROOM
SV-7	FIRE PUMP BY-PASS	SPRINKLER ROOM
SV-8	FIRE PUMP SUCTION	SPRINKLER ROOM
SV-9	FIRE PUMP DISCHARGE	SPRINKLER ROOM
SV-10	FIRE PUMP TEST HEADER	SPRINKLER ROOM
SV-11	FIRE STANDPIPE RISER-P1	P-1 PARKING GARAGE
SV-12	FIRE STANDPIPE RISER-P2	P-1 PARKING GARAGE
SV-13	FIRE STANDPIPE RISER-4 & P3	P-1 PARKING GARAGE
SV-14	FIRE STANDPIPE RISER-1	P-1 PARKING GARAGE
SV-15	FSP & SPR. COMBINATION RISER (FSP-2)	P-1 PARKING GARAGE
SV-16	FIRE STANDPIPE RISER-3	P-1 PARKING GARAGE
SV-20	SPR. RISER ISOLATION	GARBAGE ROOM (170)
SV-21	SPR. SYSTEM ON GROUND LEVEL	GARBAGE ROOM (170)
SV-22	SPR. SYSTEM IN GARBAGE ROOM	GARBAGE ROOM (170)
SV-23	SPR. RISER IN GARBAGE CHUTE.	GARBAGE ROOM (170)
SV-24	SPR. SYSTEM IN TOWNHOUSE AT NORTHEAST CORNER.	GARBAGE ROOM (170)
SV-25	SPR. SYSTEM ON 2ND LEVEL	2ND LEVEL (STAIR G)
SV-26	SPR. SYSTEM ON 3RD LEVEL	3RD LEVEL (STAIR F)
SV-27	SPR. SYSTEM ON 4TH LEVEL	4TH LEVEL (STAIR G)
SV-28	SPR. SYSTEM ON 5TH LEVEL	5TH LEVEL (STAIR F)
SV-29	SPR. SYSTEM ON 6TH LEVEL	6TH LEVEL (STAIR G)
SV-30	SPR. SYSTEM ON 7TH LEVEL	7TH LEVEL (STAIR F)
SV-31	SPR. SYSTEM ON 8TH LEVEL	8TH LEVEL (STAIR G)
SV-32	SPR. SYSTEM ON 9TH LEVEL	9TH LEVEL (STAIR F)
SV-33	SPR. SYSTEM ON 10TH LEVEL	10TH LEVEL (STAIR G)
SV-34	SPR. SYSTEM ON 11TH LEVEL	11TH LEVEL (STAIR F)
SV-35	SPR. SYSTEM ON 12TH LEVEL	12TH LEVEL (STAIR G)
SV-36	SPR. SYSTEM ON 13TH LEVEL	13TH LEVEL (STAIR F)
SV-37	SPR. SYSTEM ON 14TH LEVEL	14TH LEVEL (STAIR G)
SV-38	SPR. SYSTEM ON MECH. PENHOUSE	PENHOUSE
SV-39	SPR. SYSTEM IN MECH. P.H. ON 9TH FL.	MECH. RM ON 9TH FL.
SV-41	WIN. SPR.'S ON P1	STAFF ROOM ON P1
SV-42	WIN. SPR.'S ON P2	STAFF ROOM ON P1
SV-43	WIN. SPR.'S ON GR. FL.	CORRIDOR ON GR. FL.
SV-44	WIN. SPR.'S ON 2ND FL.	2ND FL. (STAIR J)
SV-45	WIN. SPR.'S ON 3RD FL.	3RD FL. (STAIR J)
SV-46	WIN. SPR.'S ON 4TH FL.	4TH FL. (STAIR J)

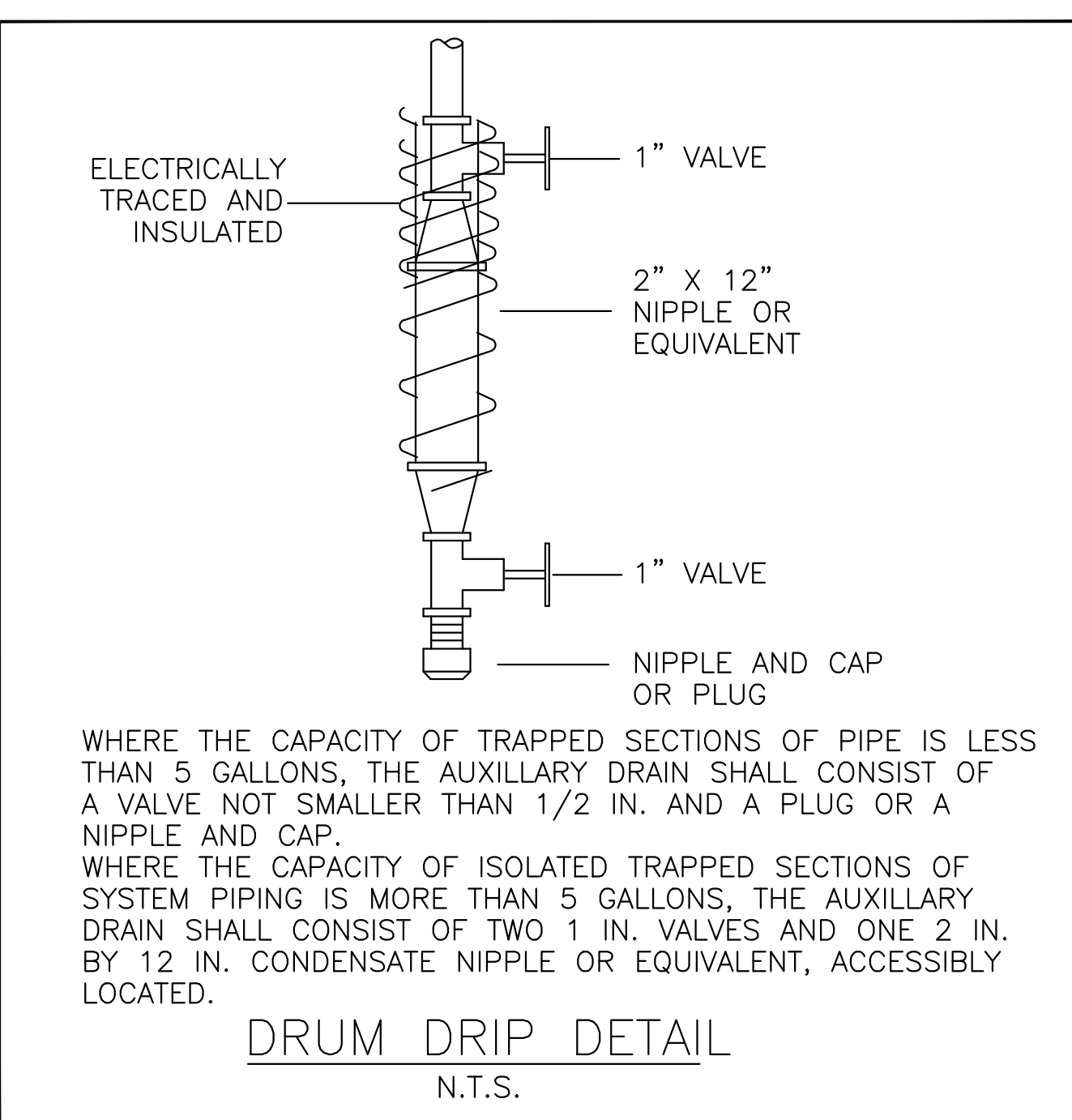
FIRE PROTECTION SYSTEM FLOW SWITCHES SCHEDULE		
ZONE	DESCRIPTION	LOCATION
FS-21	SPR. SYSTEM ON GROUND LEVEL	GARBAGE ROOM (170)
FS-22	SPR. SYSTEM IN GARBAGE ROOM	GARBAGE ROOM (170)
FS-23	SPR. RISER IN GARBAGE CHUTE.	GARBAGE ROOM (170)
FS-24	SPR. SYSTEM IN TOWNHOUSE AT NORTHEAST CORNER.	GARBAGE ROOM (170)
FS-25	SPR. SYSTEM ON 2ND LEVEL	2ND LEVEL (STAIR G)
FS-26	SPR. SYSTEM ON 3RD LEVEL	3RD LEVEL (STAIR F)
FS-27	SPR. SYSTEM ON 4TH LEVEL	4TH LEVEL (STAIR G)
FS-28	SPR. SYSTEM ON 5TH LEVEL	5TH LEVEL (STAIR F)
FS-29	SPR. SYSTEM ON 6TH LEVEL	6TH LEVEL (STAIR G)
FS-30	SPR. SYSTEM ON 7TH LEVEL	7TH LEVEL (STAIR F)
FS-31	SPR. SYSTEM ON 8TH LEVEL	8TH LEVEL (STAIR G)
FS-32	SPR. SYSTEM ON 9TH LEVEL	9TH LEVEL (STAIR F)
FS-33	SPR. SYSTEM ON 10TH LEVEL	10TH LEVEL (STAIR G)
FS-34	SPR. SYSTEM ON 11TH LEVEL	11TH LEVEL (STAIR F)
FS-35	SPR. SYSTEM ON 12TH LEVEL	12TH LEVEL (STAIR G)
FS-36	SPR. SYSTEM ON 13TH LEVEL	13TH LEVEL (STAIR F)
FS-37	SPR. SYSTEM ON 14TH LEVEL	14TH LEVEL (STAIR G)
FS-38	SPR. SYSTEM ON MECH. PENHOUSE	PENHOUSE
FS-39	SPR. SYSTEM IN MECH. P.H. ON 9TH FL.	MECH. RM ON 9TH FL.
FS-41	WIN. SPR.'S ON P1	STAFF ROOM ON P1
FS-42	WIN. SPR.'S ON P2	STAFF ROOM ON P1
FS-43	WIN. SPR.'S ON GR. FL.	CORRIDOR ON GR. FL.
FS-44	WIN. SPR.'S ON 2ND FL.	2ND FL. (STAIR J)
FS-45	WIN. SPR.'S ON 3RD FL.	3RD FL. (STAIR J)
FS-46	WIN. SPR.'S ON 4TH FL.	4TH FL. (STAIR J)

KEY NOTES:
 1. CONNECT ALL SV'S, FS'S, PS'S AND OTHER DEVICES INDICATED ON THE SCHEDULES ABOVE TO CACF BY ADDRESSABLE CLASS A LOOPS.
 2. DIV. 16 TO INSTALL FLOW ZONES AS PER FLOW SWITCH SCHEDULE SHOWN ON SPRINKLER DRAWINGS.



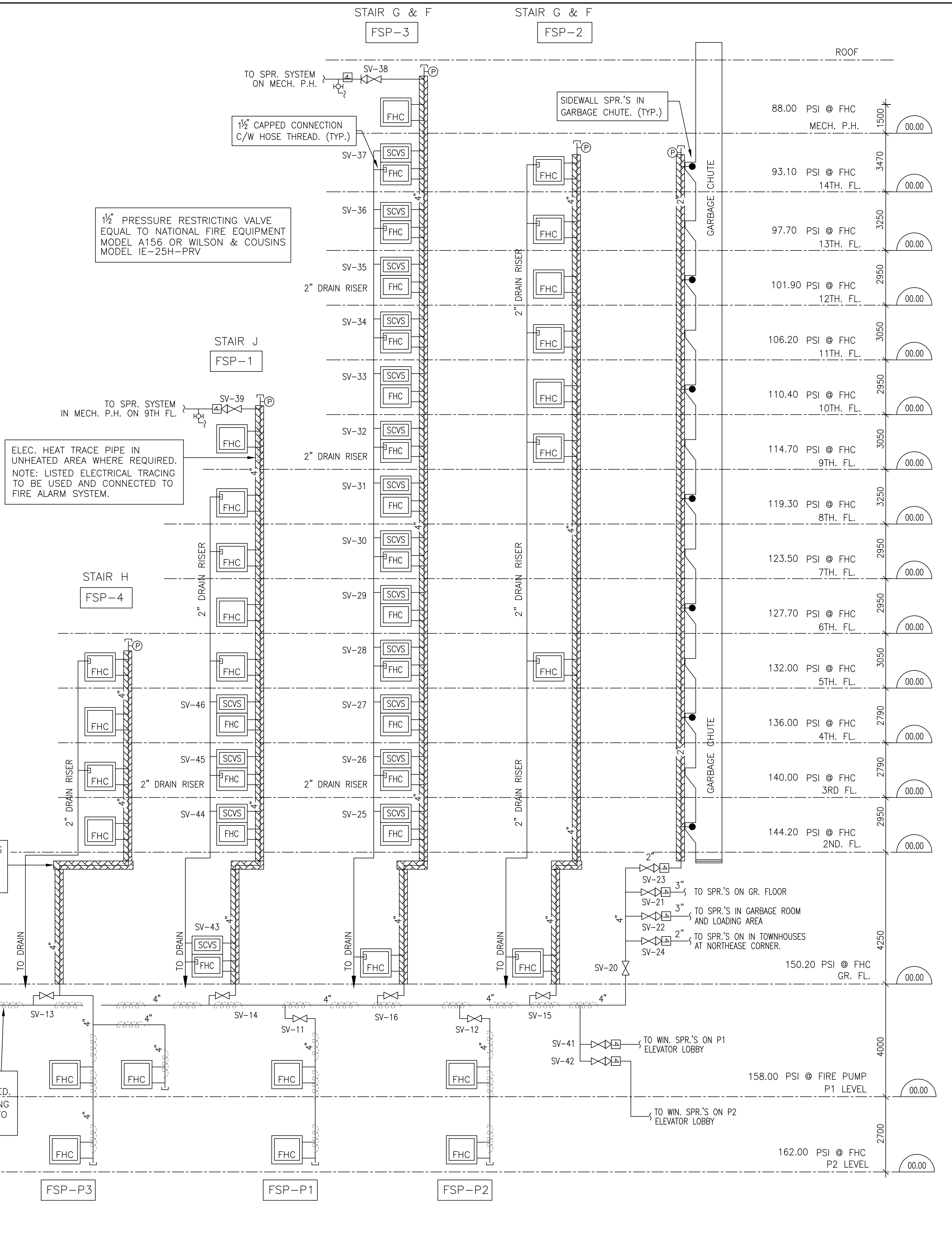
PUMPS SCHEDULE - FIRE PROTECTION						
PUMP NO.	GPM	HEAD	HP	V./~A	RPM	MAKE
FIRE PUMP	400 GPM	85 PSI	40 HP	575/3/60	3560 RPM	ARMSTRONG OR SIMILAR
JOCKEY PUMP	10 GPM	90 PSI	1 HP	575/3/60	3600 RPM	ARMSTRONG OR SIMILAR

NOTE: ELECTRICAL SPECIFICATIONS FOR FIRE PUMP TO BE CONFIRMED BY ELECTRICAL CONSULTANT.



ANCILLARY CIRCUITS (OUTPUT TO START/SHUTDOWN FANS & DEVICES)	
CR1	AHU-1 STOP (AUTOMATIC ON FIRE ALARM INITIATION & BY MANUAL SW. AT CACF)
CR2	SF-1 START (AUTOMATIC ON FIRE ALARM INITIATION & BY MANUAL SW. AT CACF)
CR3	SF-2 START (AUTOMATIC ON FIRE ALARM INITIATION & BY MANUAL SW. AT CACF)
CR4	EF-11 START (AUTOMATIC ON FIRE ALARM INITIATION & BY MANUAL SW. AT CACF)
CR5	EF-12 START (AUTOMATIC ON FIRE ALARM INITIATION & BY MANUAL SW. AT CACF)
CR6	HOLD OPEN DEVICES
CR7	CACF SIGN
CR8	FIRE DAMPERS (AUTOMATIC ON FIRE ALARM INITIATION) OPEN
CR9-CR19	SPARE (AUTOMATIC ON FIRE ALARM INITIATION & BY MANUAL SW. AT CACF)

TROUBLE PANEL		
No.	ALARM DESCRIPTION	LOCATION
1	FIRE PUMP RUNNING	P2 SPRINKLER ROOM
2	FIRE PUMP LOSS OF POWER	P2 SPRINKLER ROOM
3	FIRE PUMP LOW PRESSURE	P2 SPRINKLER ROOM
4	FIRE PUMP PHASE REVERSAL	P2 SPRINKLER ROOM
5	SPRINKLER ROOM LOW TEMP. (4°C ALARM)	P2 SPRINKLER ROOM
6	JOCKEY PUMP RUNNING	P2 SPRINKLER ROOM
7	SPRINKLER COMPRESSOR LOSS OF POWER	P2 SPRINKLER ROOM
8	STANDPIPE - ELEC. TRACED-LOSS OF POWER	P2 SPRINKLER ROOM
9	GENERATOR TROUBLE	P2 SPRINKLER ROOM
10	MAIN GAS VALVE OPEN	P2 SPRINKLER ROOM
11	STANDPIPE (FHC) - ELEC. TRACED-LOSS OF POWER	9/F MECH. ROOM
12	ELEC. HEAT TRACE PIPE-ELEC. TRACED-LOSS OF POWER	G/F RAMP TO P1



FIRE ALARM ZONE SCHEDULE		
ZONE NO.	ZONE	DESCRIPTION
1	P-2	PARKING
2	P-1	PARKING
3	G/F	PARKING RECYCLING AREA
4	G/F	PARKING GARBAGE & MOVING ROOM
5	P-2	ELEVATOR LOBBY
6	P-1	ELEVATOR LOBBY
7	P-1	SPRINKLER ROOM (P-1)
8	G/F	GARBAGE ROOM (G/F)
9	G/F	MAIN ELECTRICAL ROOM (P-2)
10	P-1	GENERATOR ROOM (P-1)
11	P-2	CHILLER ROOM (P-2)
12	P-2	AHU ROOM (P-2)
13	G/F	LOBBY
14	G/F	ELEVATOR LOBBY
15	G/F	AMENITY
16	G/F	CACF ROOM
17	2/F	RESIDENTIAL TO 14/F RESIDENTIAL
18	STAIR #A	SMOKE (P2 TO G/F)
19	STAIR #B	SMOKE (P2 TO G/F)
20	STAIR #J	SMOKE (G/F TO 9/F)
21	STAIR #F	SMOKE (G/F TO ELEV. MACH. RM.)
22-53	STAIR #G	SMOKE (G/F TO ELEV. MACH. RM.)
54	STAIR #H	SMOKE (G/F TO 5/F)
55	STAIR #K	SMOKE (14/F-ELEV. MACH. RM.)
56-87	MECHANICAL PENTHOUSE	(14/F)
88	ROOF ELEVATOR MACHINE ROOM	
89	ELEVATOR "A" SHAFT & PIT	
90	ELEVATOR "B" SHAFT & PIT	
91	ELEVATOR "C" SHAFT & PIT	
92	SF #1	SMOKE
93	SF #2	SMOKE
94	AHU-1	DUCT SMOKE
95	GARBAGE CHUTE	
96	LOADING DOCK	(G/F)
97	9/F	AMENITY - EXTERIOR
98-130		SPARES

FIRE PROTECTION SYSTEM SUPERVISED VALVES SCHEDULE		
ZONE	DESCRIPTION	LOCATION
SV-1	INCOMING FIRE MAIN ISOLATION	SPRINKLER ROOM
SV-2	INCOMING FIRE MAIN ISOLATION	SPRINKLER ROOM
SV-3	DRY SPR. SYSTEM HEADER MAIN ISOLATION	SPRINKLER ROOM
SV-4	P-1 PARKING DRY SPR. SYSTEM	SPRINKLER ROOM
SV-5	P-2 PARKING DRY SPR. SYSTEM	SPRINKLER ROOM
SV-6	FIRE PUMP BY-PASS	SPRINKLER ROOM
SV-7	FIRE PUMP BY-PASS	SPRINKLER ROOM
SV-8	FIRE PUMP SUCTION	SPRINKLER ROOM
SV-9	FIRE PUMP DISCHARGE	SPRINKLER ROOM
SV-10	FIRE PUMP TEST HEADER	SPRINKLER ROOM
SV-11	FIRE STANDPIPE RISER-P1	P-1 PARKING GARAGE
SV-12	FIRE STANDPIPE RISER-P2	P-1 PARKING GARAGE
SV-13	FIRE STANDPIPE RISER-4 & P3	P-1 PARKING GARAGE
SV-14	FIRE STANDPIPE RISER-1	P-1 PARKING GARAGE
SV-15	FSP & SPR. COMBINATION RISER (FSP-2)	P-1 PARKING GARAGE
SV-16	FIRE STANDPIPE RISER-3	P-1 PARKING GARAGE
SV-20	SPR. RISER ISOLATION	GARBAGE ROOM (170)
SV-21	SPR. SYSTEM ON GROUND LEVEL	GARBAGE ROOM (170)
SV-22	SPR. SYSTEM IN GARBAGE ROOM	GARBAGE ROOM (170)
SV-23	SPR. RISER IN GARBAGE CHUTE.	GARBAGE ROOM (170)
SV-24	SPR. SYSTEM IN TOWNHOUSE AT NORTHEAST CORNER.	GARBAGE ROOM (170)
SV-25	SPR. SYSTEM ON 2ND LEVEL	2ND LEVEL (STAIR G)
SV-26	SPR. SYSTEM ON 3RD LEVEL	3RD LEVEL (STAIR F)
SV-27	SPR. SYSTEM ON 4TH LEVEL	4TH LEVEL (STAIR G)
SV-28	SPR. SYSTEM ON 5TH LEVEL	5TH LEVEL (STAIR F)
SV-29	SPR. SYSTEM ON 6TH LEVEL	6TH LEVEL (STAIR G)
SV-30	SPR. SYSTEM ON 7TH LEVEL	7TH LEVEL (STAIR F)
SV-31	SPR. SYSTEM ON 8TH LEVEL	8TH LEVEL (STAIR G)
SV-32	SPR. SYSTEM ON 9TH LEVEL	9TH LEVEL (STAIR F)
SV-33	SPR. SYSTEM ON 10TH LEVEL	10TH LEVEL (STAIR G)
SV-34	SPR. SYSTEM ON 11TH LEVEL	11TH LEVEL (STAIR F)
SV-35	SPR. SYSTEM ON 12TH LEVEL	12TH LEVEL (STAIR G)
SV-36	SPR. SYSTEM ON 13TH LEVEL	13TH LEVEL (STAIR F)
SV-37	SPR. SYSTEM ON 14TH LEVEL	14TH LEVEL (STAIR G)
SV-38	SPR. SYSTEM ON MECH. PENHOUSE	PENHOUSE
SV-39	SPR. SYSTEM IN MECH. P.H. ON 9TH FL.	MECH. RM ON 9TH FL.
SV-41	WIN. SPR.'S ON P1	STAFF ROOM ON P1
SV-42	WIN. SPR.'S ON P2	STAFF ROOM ON P1
SV-43	WIN. SPR.'S ON GR. FL.	CORRIDOR ON GR. FL.
SV-44	WIN. SPR.'S ON 2ND FL.	2ND FL. (STAIR J)
SV-45	WIN. SPR.'S ON 3RD FL.	3RD FL. (STAIR J)
SV-46	WIN. SPR.'S ON 4TH FL.	4TH FL. (STAIR J)

ELECTRICAL LEGEND	
LIGHTING	
FLUORESCENT LIGHT FIXTURE, TYPE AS INDICATED	
NIGHT LIGHT OR LIGHT CONNECTED TO EMERGENCY POWER	
CEILING MOUNTED WALL MOUNTED LIGHT FIXTURE, INCREASED LETTERING IDENTIFY TYPE	
POLE MOUNTED LIGHT FIXTURE, INCREASED LETTERING IDENTIFY TYPE	
CARRIED CEILING LIGHT OUTLET	
TRACK LIGHT	
TRIP LIGHT	
UNDER CABINET FLUORESCENT LIGHT FIXTURE	
CEILING MOUNTED WALL MOUNTED EXIT SIGN	
EMERGENCY LIGHTING - LAMP REMOVE HEAD	
EMERGENCY BATTERY PACK	
OCCUPANCY SENSOR POWER SACKS	
SINGLE/DOUBLE/THREE POLE SINGLE/DOUBLE/THREE THROW TOGGLE SWITCH RESPECTIVELY	
1/4" x 1/4" x 1/4" DEVICES 3-WAY/4-WAY/FLOUT LIGHT, DIMMER SWITCHED LIGHT RESPECTIVELY	
MASTER LIGHTING SHUT-OFF SWITCH	
SENSOR WALL SWITCH, FIRE SELF POWERED	
OCCUPANCY SENSOR CEILING MOUNTED	
POWER	
REGULAR DUPLEX RECEPTACLE	
DUPLEX RECEPTACLE, GROUND FAULT INTERRUPT	
3-PHASE FLUOT DUPLEX RECEPTACLE	
SINGLE RECEPTACLE TYPE AND CONFIGURATION AS SPECIFIED FOR DRIVER	
CONNECTION FOR OVERHEAD COOKTOP	
MOVIE COUNTER DEVICE	
FLOOR MOUNTED DEVICES	
CEILING MOUNTED DEVICES	
DISCONNECT SWITCH, NON-FUSED	
DISCONNECT SWITCH, FUSED	
OPERATION STARTER	
FRACTIONAL MOTOR, DIRECT CONNECTION	
DIRECT CONNECTION SINGLE PHASE	
DIRECT CONNECTION THREE PHASE	
THERMOSTAT	
DRYER SENSOR	
HEAT TRACE	
ELECTRICAL HEATER	
ELECTRICAL PANEL / SECURITY PANEL	
TELECOMMUNICATION	
TV/CABLE OUTLET	
TELEPHONE / CABLE (MULTI-PORT) OUTLET	
DATA OUTLET	
DATA/TELEPHONE OUTLET	
N RITE TELECOM BOX OR RECEPTACLE	
WIFI LOCATION	
VIDEO INTERCOM	
RADIO RECEIVER	
SECURITY	
INTERCOM / ENTERPHONE	
INTERCOM WITH CAMERA	
PANIC BUTTON / PANIC INTERCOM STATION	
CARD READER	
AUTOMATIC RELEASE CARD ACCESS/RADIO RECEIVER	
ELECTRIC STRIKE	
MAGLOCK	
DOOR CONTACT / WINDOW CONTACT	
GLASS BREAK DETECTOR	
AUTOMATIC DOOR OPERATOR	
MOTION DETECTOR	
PUSH BUTTON	
SECURITY CAMERA	
LIFE SAFETY	
FIRE ALARM SMOKE DETECTOR	
SMOKE ALARM	
FIRE ALARM DUCT TYPE SMOKE DETECTOR	
FIRE ALARM HEAT DETECTOR	
FIXED TEMP. 68 °C DEGREE HEAT DETECTOR	
MOISTURE PROOF HEAT DETECTOR	
CO ALARM	
COMBINATION SMOKE & CO ALARM	
CO SENSOR / NO SENSOR	
FIRE ALARM MANUAL CALL STATION	
FIREFIGHTER'S HANDSET	
FIRE ALARM SPEAKER/STROBE WALL MTD.	
FIRE ALARM SPEAKER/WALL MTD.	
FIRE ALARM SPEAKER/STROBE CEILING MTD.	
FIRE ALARM SPEAKER, CEILING MTD.	
FIRE ALARM ANNUNCIATOR PANEL	
FIRE ALARM CONTROL PANEL	
REVISIONS	
NOVA	
175 West Beaver Creek Road, Unit 31 Richmond Hill, Ontario L4B 3P1 Tel: 905 882-5445 Fax: 905 882-5441 Email: cacf@novatrendeng.com	
DATE: FEB 13	PROJECT NUMBER: 1313
DRAWING NUMBER: E-33	SCALE: N.T.S.
DRAWING TITLE: FIRE ALARM SCHEDULES & DETAILS	
PROJECT FILE: ALEXANDRA PARK	
38 CAMERON STREET, BLOCK II TORONTO ONTARIO	