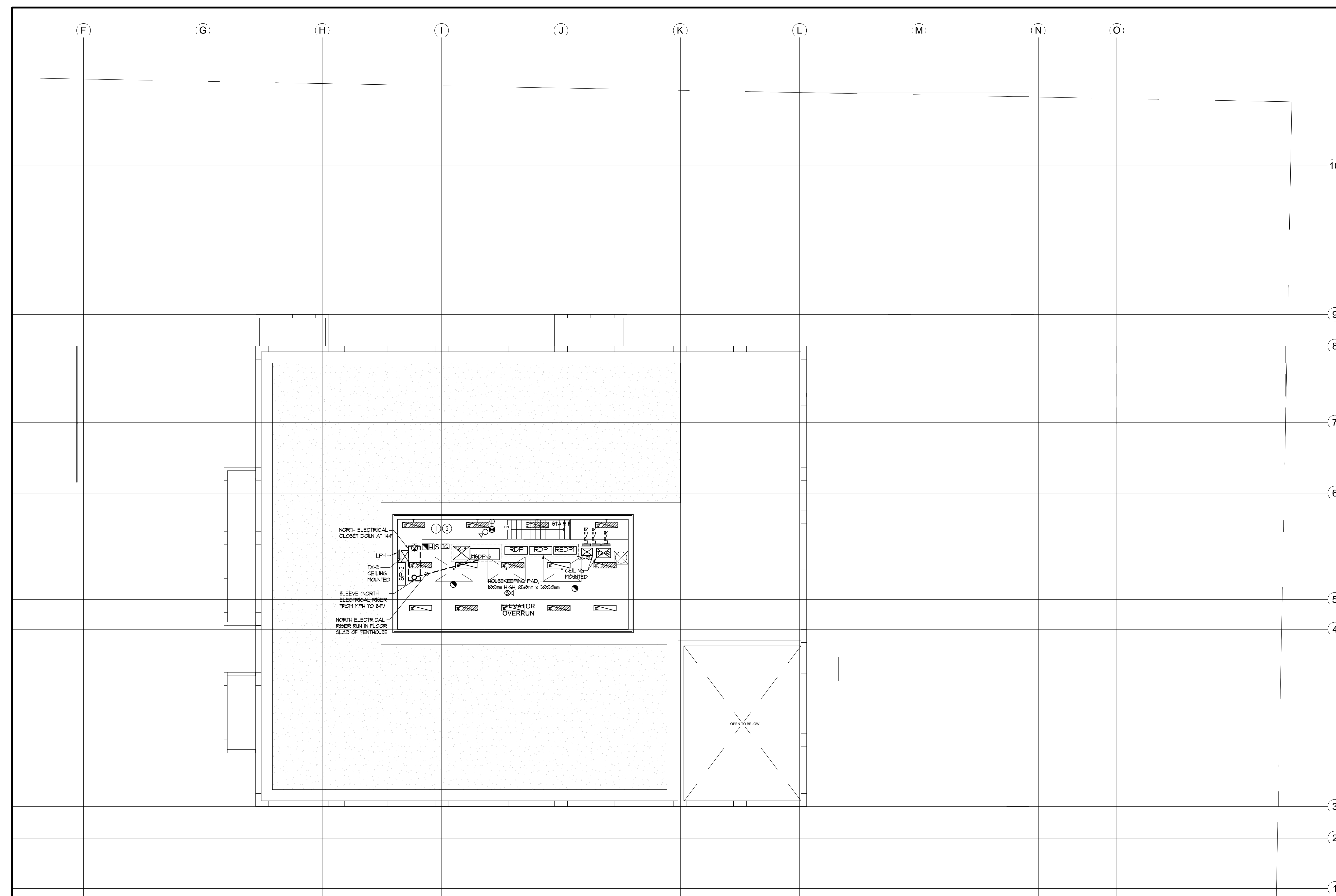


Drawing Name: \\s0200000\Current\Draw\131313 - Alexandra Park\Draw\131313 - 29 (ROOF) ELEC.dwg
Printed: May 26, 2014 - 1:22pm
Drawing Scale: 1:50



LIGHTING FIXTURE LOCATION	CCT. #	RECEPTACLE LOCATION	CCT. #
F4 TO F1 - EXIT SIGNS	EX-XX	LOBBY (F4 TO F1)	EX-XX
G/F TO 10/F - EXIT SIGNS	EX-XX	STAIR 'A' (B/F/2/F/F)	EX-XX
I/F TO ROOF - EXIT SIGNS	EX-XX	STAIR 'B' (M/F/3/2/1/4/1/8/5) FLOORS	EX-XX
LOBBY (F4 TO F1)	EX-XX	STAIR 'B' (B/3/3/F/4) FLOORS	EX-XX
STAIR 'A' (F4 TO G/F)	EX-XX	STAIR 'C' (M/F/3/2/1/4/1) FLOORS	EX-XX
CORRIDOR	EX-XX	STAIR 'C' (B/3/2/3/6/3) FLOORS	EX-XX
	EX-XX	STAIR 'D' (F/4) FLOORS	EX-XX
	EX-XX	STAIR 'E' (F/1) FLOOR	EX-XX
	EX-XX	CORRIDOR	EX-XX

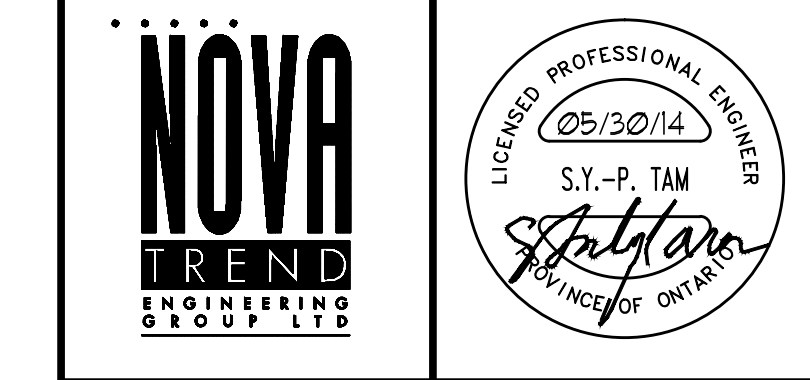
- ### GENERAL NOTES - ROOF:
- ELECTRICAL DRAWINGS SHALL BE READ IN CONJUNCTION WITH MECHANICAL, STRUCTURAL, ARCHITECTURAL AND LANDSCAPE DRAWINGS.
 - CONTRACTOR SHALL RUN CABLES WITHIN CEILING SLAB OR ENCLOSURES TO RETAIN 2 HOUR FIRE PROTECTION RATING FOR ALL LOADS THAT CONNECT TO EMERGENCY POWER.
 - PROVIDE ALARM SPEAKER, SMOKE DETECTOR AND RECEPTACLE AT EVERY THIRD FLOOR STAIR WELL.
 - STAIRWAY WALL MOUNTED EMERGENCY LIGHT FIXTURES SHALL BE MOUNTED @ 1' AFF.
 - FOR STORAGE ROOM VENTILATION SYSTEM, DIV. 16 TO PROVIDE CONDUIT, WIRING AND SWITCH (S) TO START/STOP FAN AND DAMPER. FAN AND 110V ACTUATOR TO BE SUPPLIED AND INSTALLED BY DIV. 15.
 - FOR UTILITY ROOM VENTILATION SYSTEM, DIV. 15 WILL PROVIDE LINE VOLTAGE THERMOSTAT (T) TO DIV. 16. DIV. 16 TO PROVIDE CONDUIT AND WIRING TO START/STOP FAN AND DAMPER VIA THERMOSTAT. FAN AND 110V ACTUATOR TO BE SUPPLIED AND INSTALLED BY DIV. 15.
 - FOR UNIT HEATER, DIV. 15 TO PROVIDE LINE VOLTAGE THERMOSTAT (T), DIV. 16 TO PROVIDE CONDUIT AND WIRING TO START/STOP UNIT HEATER.
 - CONDUITS TO MEDIUM SIZED TRANSFORMERS (300KVA-450KVA) ARE NOT TO BE BURIED IN THE ROOF SLAB RIGHT UP TO THE UNIT. INSTEAD, THEY ARE TO BE ROUTED ACROSS THE CEILING OF THE MECHANICAL PENTHOUSE AND BACK DOWN TO CONNECT TO THE TRANSFORMER.
 - ELECTRICAL FEEDS TO THE CHILLER SHOULD BE ROUTED ACROSS THE CEILING AND DOWN TO THE CHILLER PANEL, NOT UP THROUGH THE FLOATING FLOOR.
 - ELEVATOR CONTROLLER SUPPLIED AND INSTALLED BY OTHERS. THIS CONTRACTOR SHALL PROVIDE INTERCONNECTION BETWEEN FIRE ALARM CONTROL PANEL AND ELEVATOR CONTROLLER.
 - DIV. 16 TO PROVIDE 1" CONDUIT TO AUTOMATIC (T) TRANSFER SWITCH AND GENERATOR CONTROLLER. REFER TO SINGLE LINE DIAGRAM DIAG. E-30 FOR CONDUIT RISER DETAILS.
 - REFER TO SPRINKLER DRAWINGS FOR FIRE PROTECTION DEVICE TO BE CONNECTED TO THE FIRE ALARM SYSTEM. THE DEVICE AND EQUIPMENT SHALL FORM AN INTEGRAL PART OF THE ELECTRICAL CONTRACT.
 - DIV. 16 SHALL SUPPLY & INSTALL CONDUIT & WIRE AND INTERLOCK FANS TO MOTORIZED DAMPERS AND TO THE THERMOSTAT.
 - DIV. 16 SHALL SUPPLY & INSTALL CONDUIT & WIRING TO ALL BOILER CONTROLS (HIGH LIMIT SWITCH, FLOW SWITCH, VALVES ETC...).

- ### KEY NOTES - ROOF:
- FOR CIRCUITING, REFER TO TABLE #1.
 - ELECTRICAL CONTRACTOR SHALL PROVIDE THE FOLLOWINGS FOR BOILER:
 - 1) 115V, 3Ø, 15A FEEDER FOR BOILER CIRCULATING PUMP.
 - 2) 115V, 1Ø, 15A DEDICATED CIRCUIT FOR BOILER IGNITER.
 - 3) BOILER SHUTDOW PUSHBUTTON AT EXIT OF MECHANICAL ROOM.
 - DIV. 16 TO SUPPLY, DIV. 15 TO INSTALL HOSPITAL PLUS GRADE MUFFLER ON THE GENERATOR EXHAUST. MUFFLER AND EXHAUST PIPE SHOULD BE ISOLATED FROM THE BUILDING STRUCTURE USING SPRINGS OR HIGH TEMPERATURE FELT PADS.
 - PROVIDE CONDUIT AS PER SECURITY CONDUIT CONNECTION DIAGRAM ON DIAG. E-31.
 - PROVIDE CONDUIT AS PER TELECOM RISER ON DIAG. E-31.
 - ALL EXTERIOR LIGHTS SHALL BE CONTROLLED BY A TIMER/CONTACTOR LOCATED NEAR 'LP-R', CONNECT LIGHTS TO CIRCUIT AS SHOWN.
 - ALLOCATE 2, 120V, 15A, CIRCUITS FROM PANEL 'LP-R' FOR MECHANICAL CONTROL. CONTRACTOR COORDINATE WITH DIV. 15 FOR EXACT LOCATION. REFER TO PANEL SCHEDULE FOR CCT#R1, R1, R1.

ELECTRICAL LEGEND	
LIGHTING	
[Symbol]	FLUORESCENT LIGHT FIXTURE, TYPE AS NOTICED
[Symbol]	NIGHT LIGHT OR LIGHT CONNECTED TO EMERGENCY POWER
[Symbol]	CEILING MOUNTED WALL MOUNTED LIGHT FIXTURE, INSCRIBED LETTER DENOTES TYPE
[Symbol]	POLE MOUNTED LIGHT FIXTURE, INSCRIBED LETTER DENOTES TYPE
[Symbol]	CAPPED CEILING LIGHT OUTLET
[Symbol]	TRACK LIGHT
[Symbol]	STRIP LIGHT
[Symbol]	UNDER CABINET FLUORESCENT LIGHT FIXTURE
[Symbol]	CEILING MOUNTED WALL MOUNTED EXIT SIGN
[Symbol]	ANGULAR EMERGENCY LAMP KENOTE HEAD
[Symbol]	EMERGENCY BATTERY PACK
[Symbol]	OCCUPANCY SENSOR POWER PACKS
[Symbol]	SINGLE/THREE POLE SINGLE/DOUBLE THROUGH SINGLE SWITCH RESPECTIVELY
[Symbol]	3-Ø 1/4"Ø DENOTES 3-WAY 4-WAY FLUO. LIGHT, OTHER SWITCHED LIGHT RESPECTIVELY
[Symbol]	MASTER LIGHTING SWITCH OFF SWITCH
[Symbol]	SENSOR WALL SWITCH FIRE SELF POWERED
[Symbol]	OCCUPANCY SENSOR CEILING MOUNTED
POWER	
[Symbol]	REGULAR DUPLEX RECEPTACLE
[Symbol]	DUPLEX RECEPTACLE GROUND FAULT INTERRUPT
[Symbol]	3-Ø 1/4"Ø DUPLEX RECEPTACLE
[Symbol]	SINGLE RECEPTACLE TYPE AND CONFIGURATION AS SPECIFIED FOR DRYER
[Symbol]	CONNECTION FOR OVERCURRENT
[Symbol]	ABOVE COUNTER DEVICE
[Symbol]	CEILING MOUNTED DEVICES
[Symbol]	FLOOR MOUNTED DEVICES
[Symbol]	DISCONNECT SWITCH, NON-RAISED
[Symbol]	DISCONNECT SWITCH, RAISED
[Symbol]	COMBINATION SWITCH
[Symbol]	FRACTIONAL MOTOR/FAN DIRECT CONNECTION
[Symbol]	DIRECT CONNECTION, SINGLE PHASE
[Symbol]	DIRECT CONNECTION, THREE PHASE
[Symbol]	THERMOSTAT
[Symbol]	DRYER SENSOR
[Symbol]	HEAT TRACE
[Symbol]	ELECTRICAL HEATER
[Symbol]	ELECTRICAL PANEL / SECURITY PANEL
TELECOMMUNICATION	
[Symbol]	TV/CABLE OUTLET
[Symbol]	TELEPHONE OUTLET
[Symbol]	TELEPHONE CABLE (MULTI-PORT OUTLET) DATA OUTLET
[Symbol]	DATA/TELEPHONE OUTLET
[Symbol]	IN-SITE TELEPHONE BOX/CU RECEPTACLE
[Symbol]	LIFT LOCATION
[Symbol]	MUSIC SPEAKER / VOLUME CONTROL
[Symbol]	RADIO RECEIVER
SECURITY	
[Symbol]	INTERCOM / INTERPHONE
[Symbol]	INTERCOM WITH CAMERA
[Symbol]	PANIC BUTTON / PANIC INTERCOM STATION
[Symbol]	CARD READER
[Symbol]	AUTOMATIC RELEASE CARD ACCESS/RADIO RECEIVER
[Symbol]	ELECTRIC STRIKE
[Symbol]	MAGLOCK
[Symbol]	DOOR CONTACT / WINDOW CONTACT
[Symbol]	AUTOMATIC DOOR OPERATOR
[Symbol]	MOTION DETECTOR
[Symbol]	PUSH BUTTON
[Symbol]	SECURITY CAMERA
LIFE SAFETY	
[Symbol]	FIRE ALARM SPOKE DETECTOR
[Symbol]	SPOKE ALARM
[Symbol]	FIRE ALARM DUCT TYPE SPOKE DETECTOR
[Symbol]	FIRE ALARM HEAT DETECTOR
[Symbol]	FIXED TEMP. 58 °C SMOKE HEAT DETECTOR
[Symbol]	MOISTURE PROOF HEAT DETECTOR
[Symbol]	CO ALARM
[Symbol]	COMBINATION SPOKE & CO ALARM
[Symbol]	CO SENSOR / NO SENSOR
[Symbol]	FIRE ALARM MANUAL PULL STATION
[Symbol]	PERIPHERAL HANDSET
[Symbol]	FIRE ALARM STROBE/ALARM WALL MTD.
[Symbol]	FIRE ALARM HORN/WALL MTD.
[Symbol]	FIRE ALARM SPEAKER/STROBE CEILING MTD.
[Symbol]	FIRE ALARM SPEAKER CEILING MTD.
[Symbol]	FIRE ALARM ANNUNCIATOR PANEL
[Symbol]	FIRE ALARM CONTROL PANEL

NO.	DATE	DESCRIPTION

CONTRACTOR MUST CHECK AND VERIFY ALL DIMENSIONS AND CONDITIONS ON THE JOB AND REPORT DISCREPANCIES TO THE ENGINEER BEFORE PROCEEDING WITH THE WORK. THIS DRAWING IS THE PROPERTY OF THE ENGINEER AND IS TO BE USED ONLY FOR THE PROJECT OF THE WORK. DRAWINGS ARE NOT TO BE SCALED.



1715 West Beaver Creek Road, Unit 31
Richmond Hill, Ontario L4B 3M1
Tel: 905-887-5445
Fax: 905-882-5447
Email: alex@novatrendeng.com

PROJECT TITLE: ROOF FLOOR PLAN ELECTRICAL LAYOUT

PROJECT: ALEXANDRA PARK

DATE: FEB 13 2013

DRAWN BY: S.O. CHECKED BY: S.T. SCALE: 1:50

DATE: FEB 13 2013 PROJECT NUMBER: 1313 DRAWING NUMBER: E-29