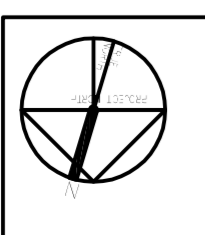
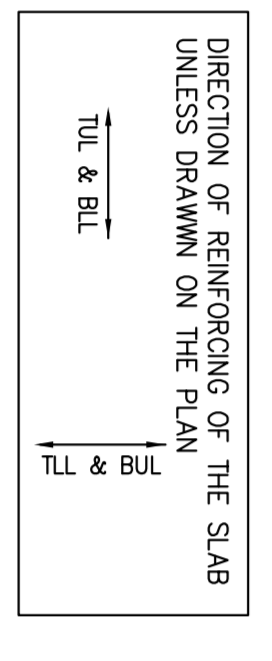


**7TH FLOOR FRAMING PLAN**  
SCALE 1:100

- TOP OF SLAB IS AT ELEVATION AS SHOWN ON ARCH. DRAWINGS EXCEPT AS CROSSED AND NOTED ON PLAN.
- CONCRETE STRENGTH AT 28 DAYS SHALL BE:
  - FOR WALLS AND COLUMNS ..... SEE SCHEDULE FOR INTERIOR SLABS
  - FOR BEAMS ..... 25 MPa
  - CONCRETE EXPOSED TO ELEMENTS SHALL BE 35 MPa WITH 6% OR ENHANCED AIR.
- LOOR SLABS ARE DESIGNED FOR FOLLOWING LOADING CONDITIONS:
 

	SLAB	LL
STAIRS & BALCONIES	0.50 kPa	4.80 kPa
LOBBIES & STORAGE	1.50 kPa	4.80 kPa
RESIDENTIAL	1.50 kPa	1.9 kPa
TOILETS	1.50 kPa	2.40 kPa
TERRACES	5.0 kPa	4.80 kPa
- MINIMUM YIELD STRESS FOR REINFORCING STEEL SHALL BE 400 MPa.
- TEMPERATURE REINFORCING FOR: 200 SLAB IS 100%20, 210 SLAB IS 100%20.
- NO OPENINGS LARGER THAN 300mm x 300mm ARE ALLOWED IN SLAB OTHER THAN THOSE SHOWN ON DRAWINGS.
- SEE TYPICAL DETAILS ON DRAWINGS S-001 TO S-006.
- SEE GENERAL NOTES ON DRAWINGS S-001.
- REFER TO ARCH. DRAWINGS FOR SIZES OF SLAB.
- FOR COLUMN & WALL SCHEDULE SEE DRAWINGS S-001 TO S-006.
- COORDINATE BEAM DEPTH AT DOOR OPENINGS WITH ARCH. DRAWINGS.
- EXTEND TOP OF SLAB TO END OF BALCONIES/OVERHANGS.
- TOP BARS TERMINATING AT EDGE OF SLAB TO HAVE 180° HOOK.



**ALEXANDRA PARK - BLOCK 11**  
TORONTO, ONTARIO

FIRST FLOOR ELEV. 99.600m

NO.	ISSUED / REVISION	DATE
1	ISSUED FOR PERMIT	2014/03/04
2	REVISION FOR COMMENTS	2014/03/04
3	REVISION FOR COMMENTS	2014/03/04
4	REVISION FOR COMMENTS	2014/03/04
5	REVISION FOR COMMENTS	2014/03/04
6	REVISION FOR COMMENTS	2014/03/04
7	REVISION FOR COMMENTS	2014/03/04
8	REVISION FOR COMMENTS	2014/03/04
9	REVISION FOR COMMENTS	2014/03/04
10	REVISION FOR COMMENTS	2014/03/04
11	REVISION FOR COMMENTS	2014/03/04
12	REVISION FOR COMMENTS	2014/03/04
13	REVISION FOR COMMENTS	2014/03/04
14	REVISION FOR COMMENTS	2014/03/04
15	REVISION FOR COMMENTS	2014/03/04
16	REVISION FOR COMMENTS	2014/03/04

**Jablonsky, Ast and Strimling ENGINEERS**  
1000 SHEPPARD AVENUE EAST  
SUITE 1000  
SCARBOROUGH, ONTARIO M1S 1T7  
TEL: 416-441-2777  
FAX: 416-441-2778  
E-MAIL: info@jablonsky.com

**P.F. AST**  
15915  
15915