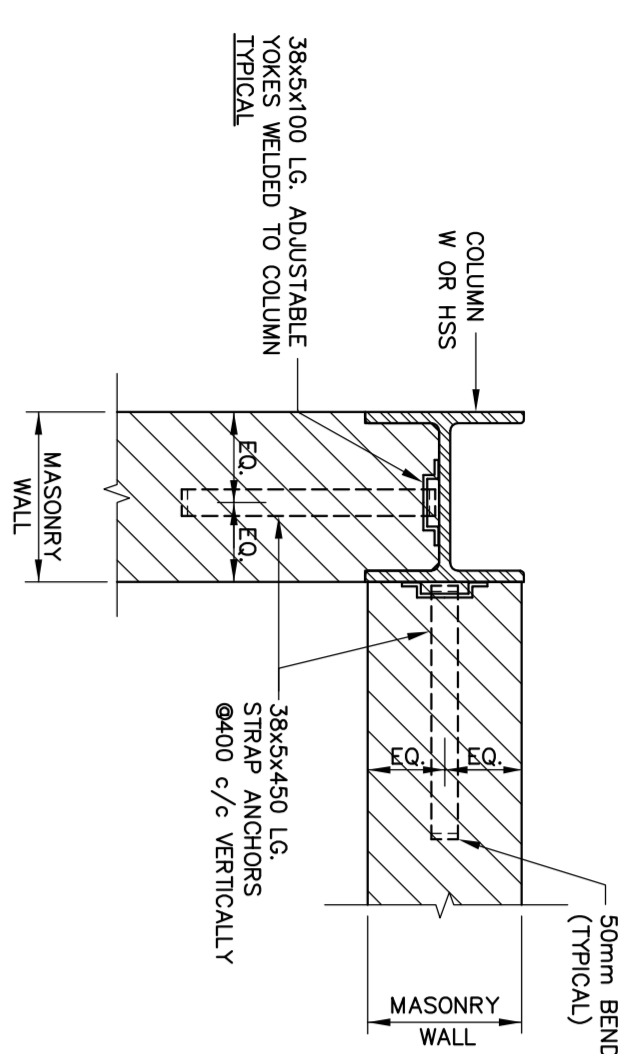


1100 TYPICAL DETAIL ANCHORAGE OF MASONRY WALL TO STEEL COLUMN

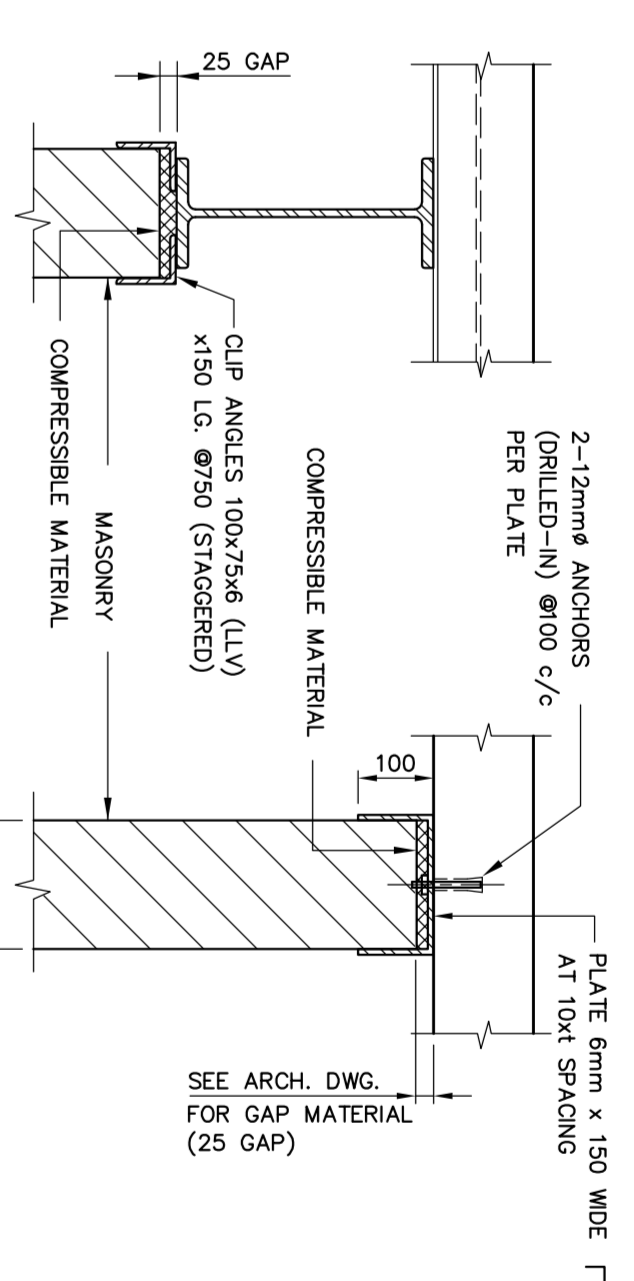


1103 TYPICAL STEEL LINTELS IN NON-LOAD BEARING MASONRY WALLS

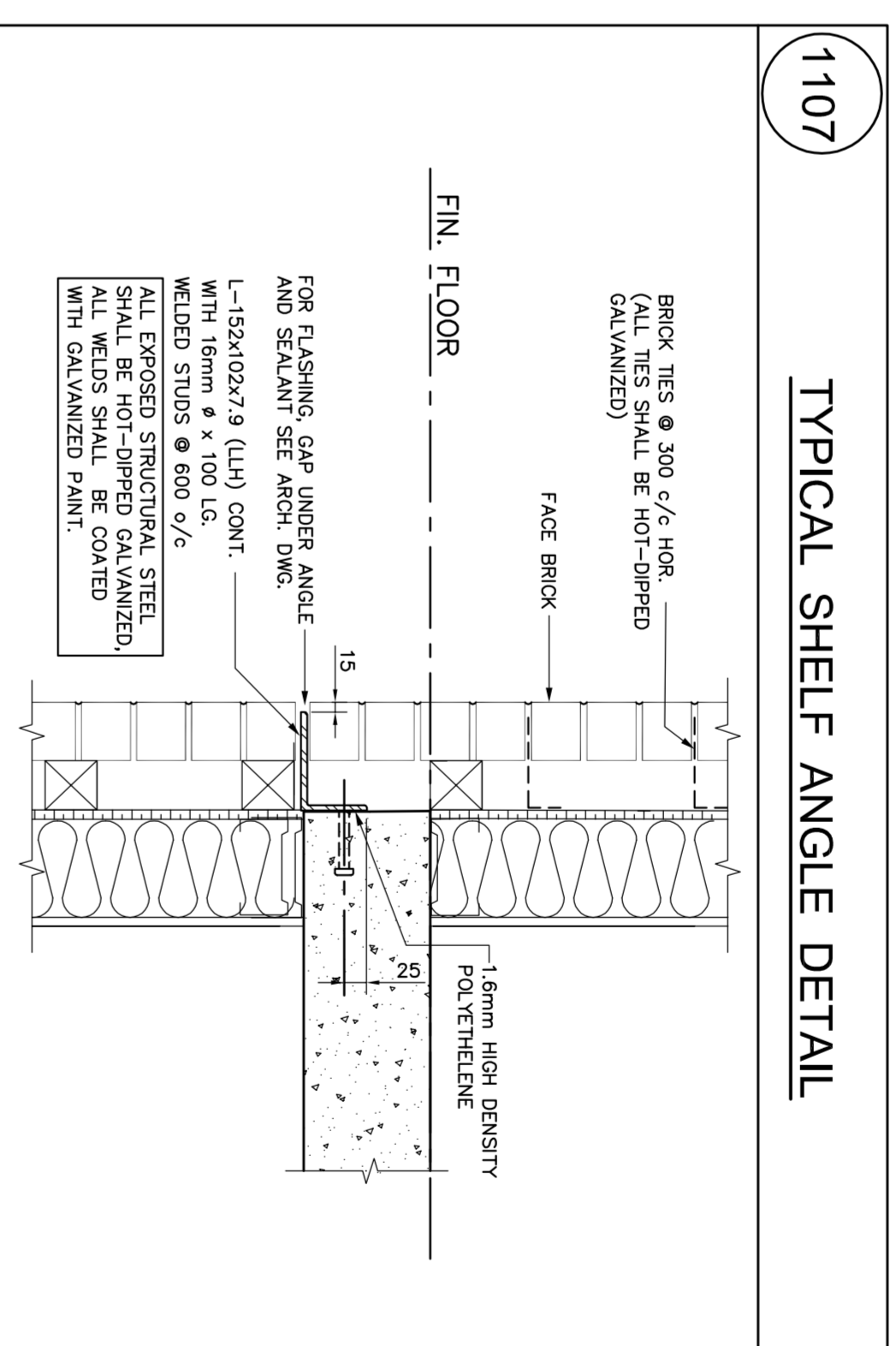
MAX CLEAR SPAN	280	280	300	318	368
1200	25 - 90x90x8	① L-90x90x8 ② L-125x80x8 (LLV)	35 - 90x90x8	① L-100x100x8 ② L-100x100x8 ③ L-90x90x8	① L-100x100x8 ② L-150x100x8 (LLV) ③ L-90x90x8
1800	25 - 100x90x8 (LLV)	① L-100x90x8 (LLV) ② L-125x125x8	35 - 100x90x8 (LLV)	① L-100x100x8 ② L-100x100x8 ③ L-100x90x8 (LLV)	① L-100x100x8 ② L-150x100x8 (LLV) ③ L-90x90x8
2400	25 - 125x90x8 (LLV)	① L-125x90x8 (LLV) ② L-125x125x10	35 - 125x90x8 (LLV)	① L-125x90x8 (LLV) ② L-125x90x8 (LLV) ③ L-100x90x8 (LLV)	① L-125x90x8 (LLV) ② L-150x100x8 (LLV) ③ L-125x90x8 (LLV)
3000	25 - 125x100x10 (LLV)	① L-150x100x10 (LLV) ② L-150x150x10	35 - 150x100x10 (LLV)	① L-150x100x10 (LLV) ② L-150x100x10 (LLV) ③ L-150x100x10 (LLV)	① L-150x100x10 (LLV) ② L-150x100x10 (LLV) ③ L-150x100x10 (LLV)

- NOTES:
- FOR 150 WALL USE #3 @ 250 WALL ABOVE
 - MIN. END BEARING FOR LINTELS SHALL BE 150mm.
 - BACK TO BACK ANGLES SHALL BE BOLTED OR WELDED TOGETHER WHEN CLEAR SPAN EXCEEDS 1800mm.
 - ALL ANGLES SHALL BE HOT-DIPPED GALVANIZED IF EXPOSED TO WEATHER.
 - PROVIDE L-90x90x10 WELDED TO STEEL COLUMN OR BOLTED TO CONCRETE COLUMN OR WALL.
 - STRUCTURAL STEEL SHALL CONFORM TO CAN/CSA G40.21-04, 300W.

1106 TYPICAL LATERAL SUPPORT FOR NON-LOAD BEARING WALL



1107 TYPICAL SHELF ANGLE DETAIL



1102 LINTEL SCHEDULE

MAXIMUM CLEAR SPAN	BLOCK LINTEL	MAXIMUM CLEAR SPAN	STEEL LINTEL FOR EXTERIOR WALL
2000	FOR INTERIOR WALL 1-15 COMT.	1800	90L BRKCC L-102x102x8
2400	FOR INTERIOR WALL 2-15 COMT.	2000	90L BRKCC L-102x102x8 L-152x102x8 L-51x51x4.8
2400	FOR EXTERIOR & CAVITY WALL 2-15 COMT.	2400	90L BRKCC L-152x102x8 (LLV) L-51x51x4.8
2400	FOR EXTERIOR & CAVITY WALL 2-15 COMT.	2400	90L BRKCC L-152x102x8 (LLV) L-51x51x4.8
3000	FOR EXTERIOR & CAVITY WALL 4-15 COMT.	3000	90L BRKCC L-203x102x13 (LLV) L-51x51x4.8

- NOTES:
- MINIMUM END BEARING FOR LINTELS SHALL BE 200mm.
 - CONCRETE FILL SHALL BE $f_c = 25$ MPa.
 - PROVIDE TEMPORARY BRACING TO SUPPORT MASONRY OVER LINTEL DURING CONSTRUCTION.
 - PROVISION SHALL CONFORM TO SECTION 111, DIVISION 5.

- NOTES:
- MINIMUM END BEARING FOR LINTELS SHALL BE 150mm.
 - ALL ANGLES SHALL BE HOT-DIPPED GALVANIZED.
 - STRUCTURAL STEEL SHALL CONFORM TO CAN/CSA G40.21-04, 300W.

1104 STEEL LINTELS FOR NON-LOAD BEARING WALLS OF HOLLOW CONCRETE BLOCK (ANY AGGREGATE)

STEEL ANGLES CLEAR SPAN MAX.	140	140	180	240	280
1200	25 - 51x38x4 BL.L.V.	25 - 64x64x4	25 - 89x76x6 4LL.V.	TL - 102x76x6 4LL.H. TL - 127x76x6 4LL.H.	35 - 89x76x6 4LL.H.
1600	25 - 51x38x4 BL.L.V.	25 - 64x64x4	25 - 89x76x6 4LL.V.	TL - 102x76x6 4LL.H. TL - 127x76x6 4LL.H.	35 - 89x76x6 4LL.H.
2000	25 - 89x64x6 4LL.V.	25 - 89x64x6 4LL.V.	25 - 89x64x6 4LL.V.	TL - 102x89x7 8LL.H. TL - 127x76x7 8LL.H.	35 - 89x76x6 4LL.H.
2400	25 - 89x64x6 4LL.V.	25 - 127x89x6 4LL.V.	25 - 127x89x6 4LL.V.	TL - 152x102x7.9 LL.V. TL - 127x127x7.9	35 - 127x89x6 4LL.V.

- NOTES:
- MINIMUM END BEARING FOR LINTELS SHALL BE CAN/CSA G40.21-04 300W.
 - MINIMUM BEARING LENGTH FOR LINTELS SHALL BE 150mm.
 - CONNECT ANGLES AT 680 mm e/e BY WELDING OR BOLTING FOR ANGLES WITH A TOTAL LENGTH OF 1800mm OR MORE.
 - PROVIDE L-90x90x10 WELDED TO STEEL COLUMN OR BOLTED TO CONCRETE COLUMN OR WALL.
 - ALL ANGLES SHALL BE HOT-DIPPED GALVANIZED IF EXPOSED TO WEATHER.

1105 DETAILS OF MASONRY BASE PLATES

