

AS/GI NOTES:
CEILING & BULKHEADS REVISED WITH
AS/GI REVISIONS NOT CLOUDED

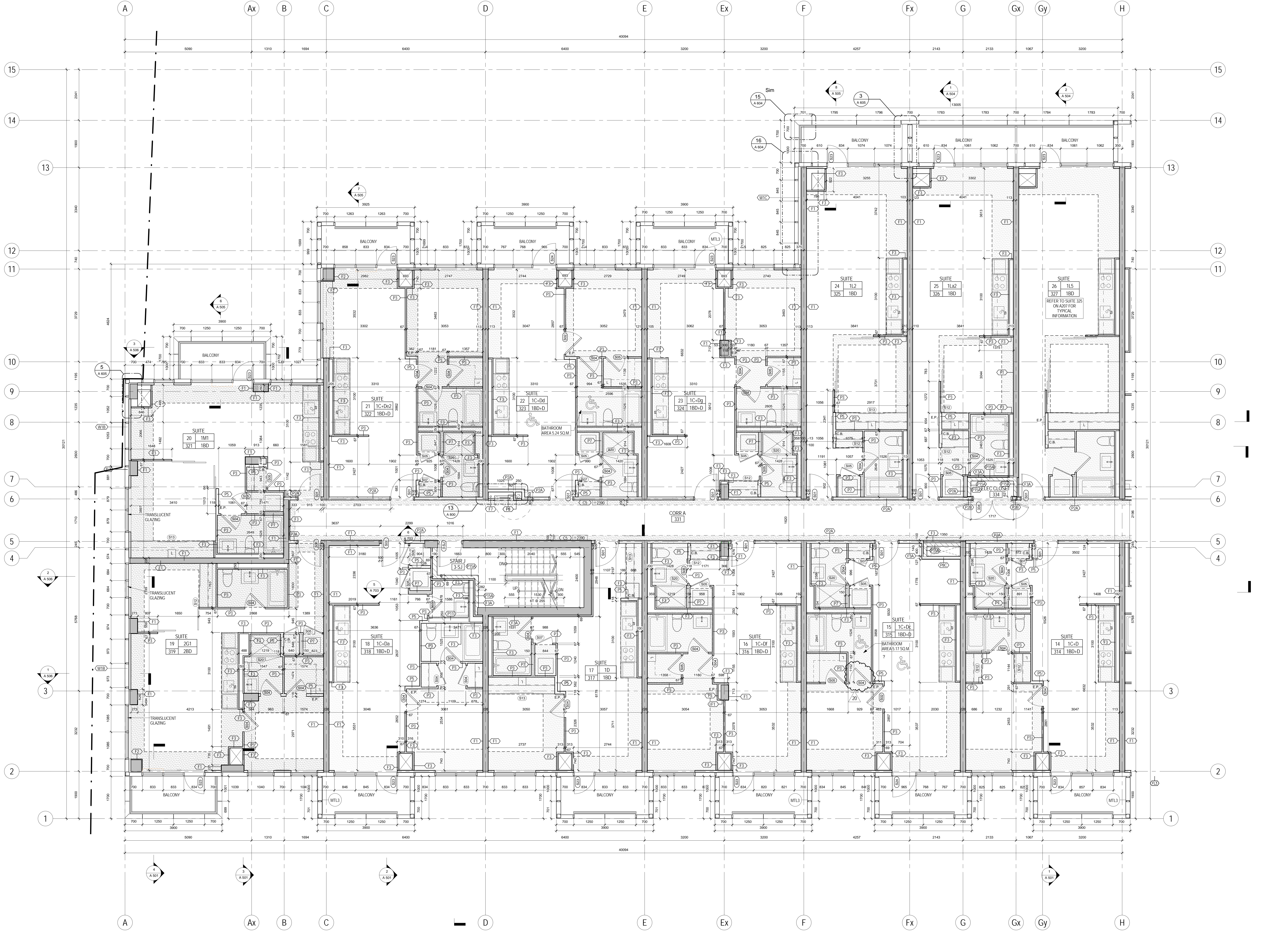
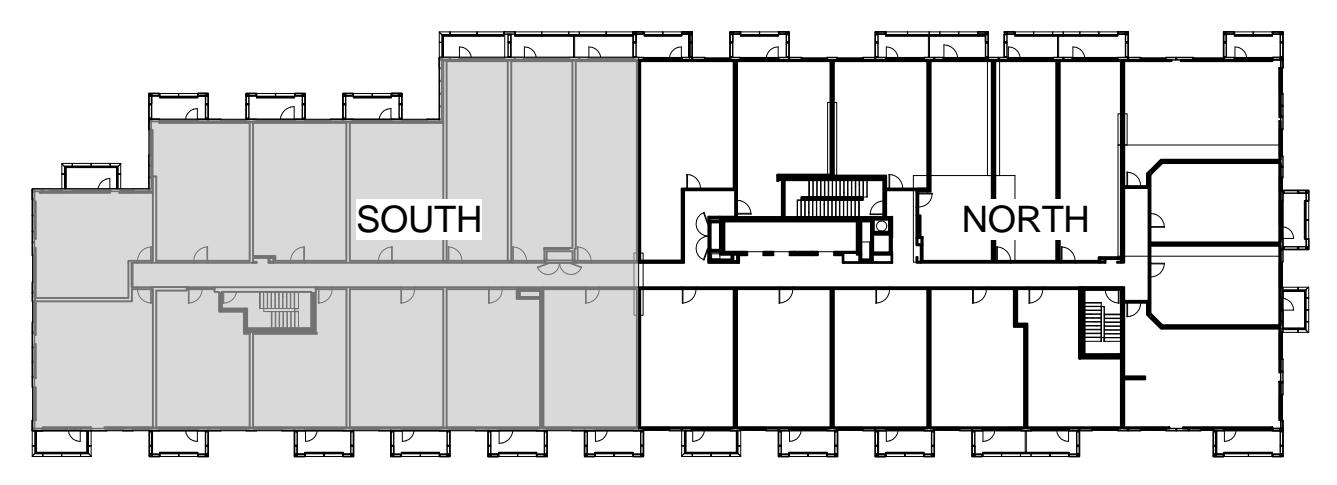
- CEILING NOTES:**
1. TYPICAL GYPSUM BULKHEAD W/O ACOUSTIC INSULATION
 2. CEILING TYPE C1 W/ ACOUSTIC INSULATION AT BATHROOMS AND LAUNDRY CLOSETS TYP.
 3. KITCHEN BULKHEAD @ 2450mm AFF TYP. U.N.O. @ 2200mm AFF ON LEVELS 1 AND 0
 4. ALL PLUMBING PENETRATING SLAB ABOVE TO BE WRAPPED W/ 38mm ACOUSTIC BATT EXCEPT IN BATHROOM CEILING.
 5. PARTITIONS AROUND C1 CEILING TO BE FILLED W/ ACOUSTIC BATT ABOVE THE CEILING. EXTEND GYPSUM TO US SLAB ABOVE ON ONE SIDE OF PARTITION MIN.
 6. WHERE PLUMBING FROM ABOVE IS LOCATED OVER A ROOM BELOW OTHER THAN A BATHROOM PROVIDE AN INSULATED C1 CEILING, PLUS WRAP THE PLUMBING IN ACOUSTIC BATT.

- PLAN DRAWING LEGEND:**
- PAINTED CIA GYPSUM BULKHEAD AT 2200 AFF UNLESS NOTED
 - YELLOW METAL PANEL CLADDING
 - EXTERIOR WALL ASSEMBLIES W/ UNLESS NOTED OTHERWISE

- DEMOTES BARRIER-FREE DESIGNATED RESIDENTIAL SUITE
- DEMOTES ROOF DRAIN AND ROOF DRAINAGE LAYOUT. REFER ALSO TO SLAB ELEVATIONS FOR SLOPES AND SLAB ELEVATIONS

- REFER TO DWG. A20 FOR DETAILS OF WINDOW WASHING SYSTEMS
- AP ANCHOR POINT
 - DB DAWT BASE
 - RDB RECESSED DAWT BASE

- RRR RECESSED ROOF ANCHOR
- RA ROOF ANCHOR
- RA-RW ROOF ANCHOR - WALL MOUNTED
- RS WINDOW WASHING RIGGING SLEEVE



PROJECT NO. 12-115
SCALE: AS SHOWN
DRAWN BY: TAU
REVIEWED BY: JH
DATE: 2014-09-22



METRIC SCALE DRAWING
FIRST FLOOR ELEV. +93.60m

No.	ISSUED / REVISION FOR	DATE
1	Issued for SPA	2013-03-28
2	Issued for Coordination	2013-04-11
3	Issued for Coordination	2013-04-11
4	Revised for SPA	2014-01-10
5	Issued for Coordination	2014-02-28
6	Issued for Tender Tender	2014-04-07
7	Issued for Coordination	2014-04-23
8	Issued for 50% Completion	2014-04-23
9	Issued for Permit	2014-05-20
10	Issued for Coordination	2014-06-23
11	Revised for Permit	2014-07-10
12	Revised for Permit	2014-08-22
13	Issued for Tender	2014-08-28
14	Issued for Tender	2014-09-22
15	Issued for Flooring Tender	2015-03-30
16	Issued for Permit	2015-04-20
17	Issued for AS/GI	2015-04-17
18	Issued for Drywall Tender	2015-08-19
19	Issued for Drywall Tender Add #1	2015-09-14
20	Issued for AS/GI	2015-11-23

SQ ALEXANDRA PARK - BLOCK 11
38 CAMERON ST., TORONTO, ONTARIO M5T 2H2

project no. 12-115
scale: AS SHOWN
drawn by: TAU
reviewed by: JH
date: 2014-09-22

Teeples Architects
1200 BAY STREET TORONTO, ONTARIO M5G 1B7
TEL: 416-593-8888 FAX: 416-593-8889
WWW.TEEPLESARCHITECTS.COM

1 LEVEL 3 PLAN SOUTH
1/AJ227 1:50