

AS104 NOTES:
CEILING & BULKHEADS REVISED WITH
AS104 REVISIONS NOT CLOUDED

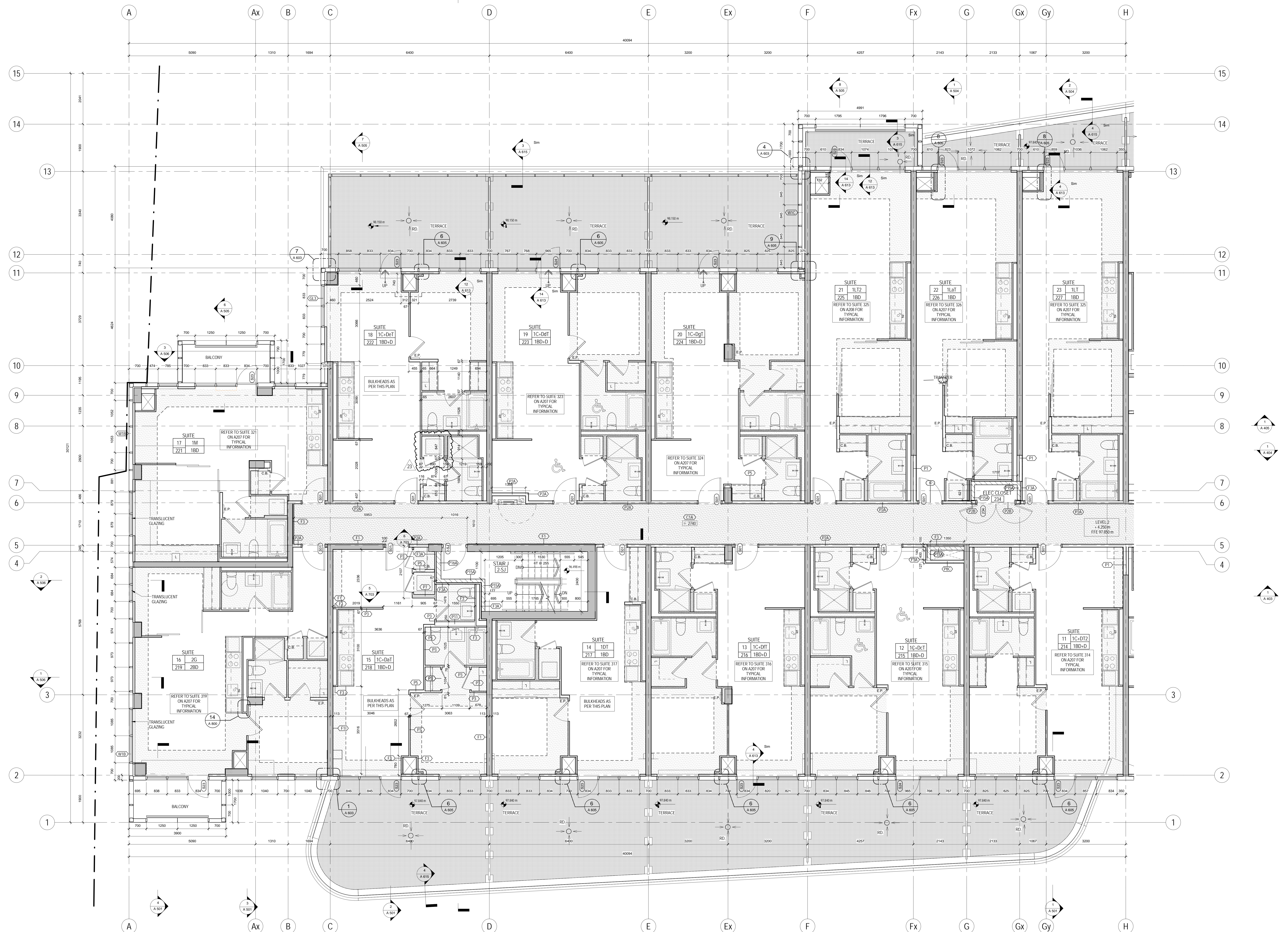
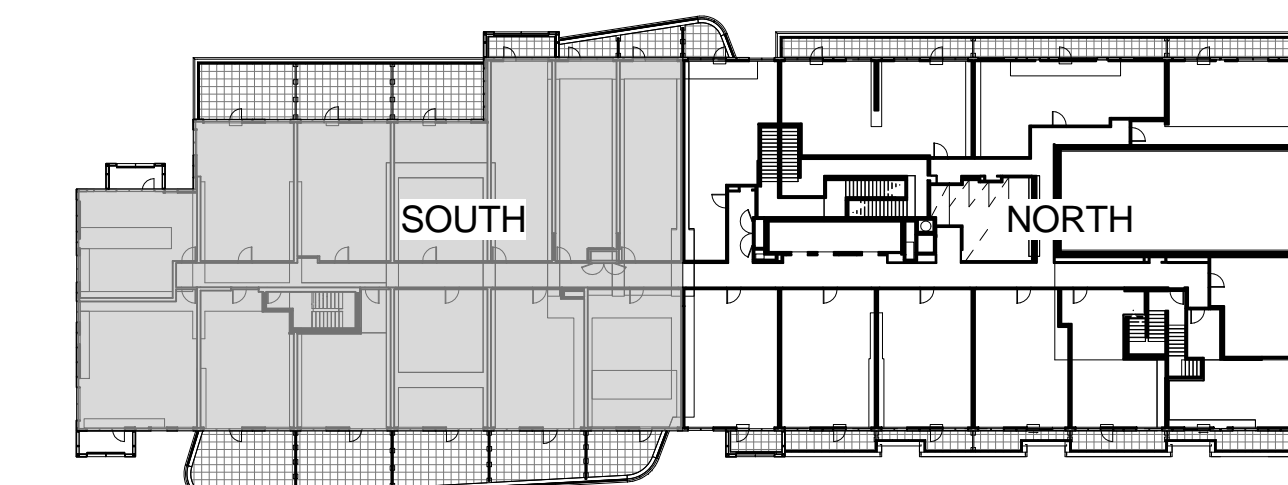
- CEILING NOTES:
1. TYPICAL GYPSUM BULKHEAD W/O ACOUSTIC INSULATION
 2. CEILING TYPE C1 W/ ACOUSTIC INSULATION AT BATHROOMS AND LAUNDRY CLOSETS TYP
 3. KITCHEN BULKHEAD @ 2400mm AFF TYP. U.I.D. @ 2200mm AFF ON LEVELS 3 AND 4
 4. ALL PLUMBING PENETRATING SLAB ABOVE TO BE WRAPPED W/ 38mm ACOUSTIC BATT EXCEPT IN BATHROOM CEILING.
 5. PARTITIONS AROUND C1 CEILING TO BE FILLED W/ ACOUSTIC BATT ABOVE THE CEILING. EXTEND GYPSUM TO US SLAB ABOVE ON ONE SIDE OF PARTITION MIN.
 6. WHERE PLUMBING FROM ABOVE IS LOCATED OVER A ROOM BELOW OTHER THAN A BATHROOM, PROVIDE AN INSULATED C1 CEILING. PLUS WRAP THE PLUMBING IN ACOUSTIC BATT.

- PLAN DRAWING LEGEND
- PAINTED DENOTES PAINTED CIA GYPSUM BULKHEAD AT 2450 AFF UNLESS NOTED
 - MTL YELLOW METAL PANEL CLADDING
 - WTA EXTERIOR WALL ASSEMBLIES W/ UNLESS NOTED OTHERWISE

- RESIDENTIAL SUITE
- RESIDENTIAL SUITE
- RESIDENTIAL SUITE

- REFER TO DWG. A200 FOR DETAILS OF WINDOW WASHING SYSTEMS
- AP ANCHOR POINT
 - DB DAVIT BASE
 - RDB RECESSED DAVIT BASE

- RRA RECESSED ROOF ANCHOR
- RA ROOF ANCHOR
- RA ROOF ANCHOR - WALL MOUNTED
- RS WINDOW WASHING RIGGING SLEEVE



METRIC SCALE DRAWING
FIRST FLOOR ELEV. +93.60m

No.	ISSUED / REVISIONS FOR	DATE
1	Issued for SPA	2013-03-28
2	Issued for Coordination	2013-04-11
3	Issued for Coordination	2013-04-11
4	Revised for SPA	2014-01-19
5	Issued for Coordination	2014-02-28
6	Issued for Tender Tender	2014-04-07
7	Issued for Coordination	2014-04-23
8	Issued for 10% Completion	2014-05-21
9	Issued for Permit	2014-05-28
10	Issued for Coordination	2014-06-23
11	Revised for Permit	2014-07-01
12	Revised for Permit	2014-08-22
13	Issued for Tender	2014-08-28
14	Issued for Tender	2014-09-22
15	Issued for Flooring Tender	2015-03-30
16	Issued for Tender	2015-03-30
17	Issued for SPA	2015-04-17
18	Issued for Drywall Tender	2015-06-18
19	Issued for Drywall Tender Add #1	2015-06-18
20	Issued for SPA 11/21	2015-09-17
21	Issued for SPA 11/21	2015-09-21
22	Issued for SPA 11/21	2015-10-23
23	Issued for SPA 11/21	2015-11-23

SQ ALEXANDRA PARK - BLOCK 11
38 CAMERON ST. TORONTO, ONTARIO M5T 2H2

project no. 12-115
scale: As indicated
drawn by: TA
reviewed by: SH
date: 2014-09-22

Teeples Architects

1 LEVEL 2 PLAN SOUTH
1/227 1:50